

**MAP**  
(CONSISTING OF 3 SHEETS)  
**SHOWING THE LAND TO BE CONDEMNED**  
FOR THE WIDENING OF  
**FLOWER STREET**  
BETWEEN  
**EIGHTH STREET**  
AND  
**WASHINGTON STREET**  
IN THE  
**CITY OF LOS ANGELES, CALIF.**

IN ACCORDANCE WITH ORDINANCES  
NOS. 53018 AND 53836.

John C. Shaw City Engineer. Mar. 1926.



**NOTE**

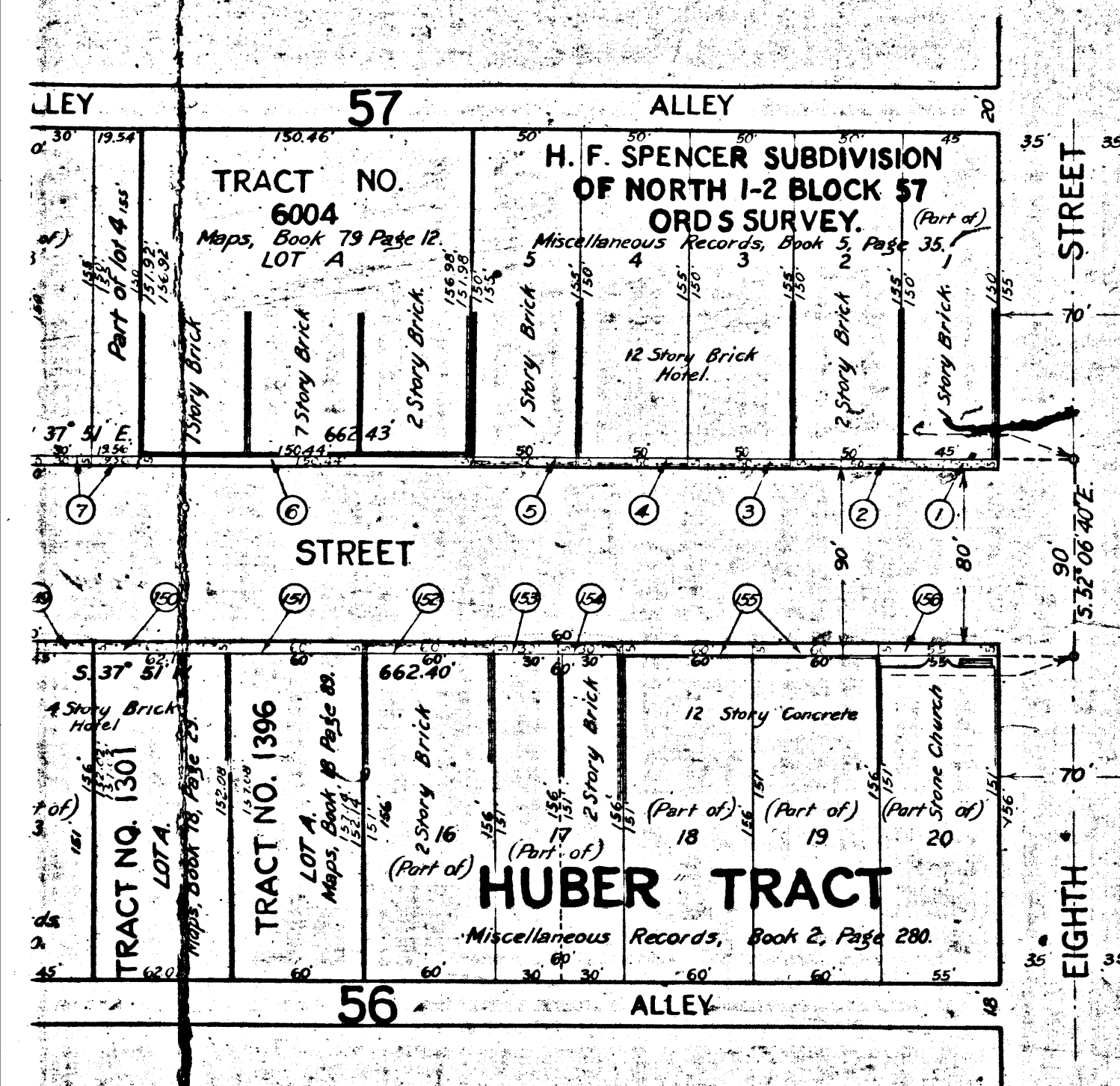
Land to be condemned shown colored red.  
Dotted lines and dimensions show property  
holdings in those cases where they differ  
from recorded subdivisions.

The figures in circles indicate the parcel  
numbers as set forth in paragraph  
VIII of the complaint.

Sht. 3  
Superior Court Case No. 200526  
Suit for Condemnation  
Filed July 8th 1926  
City of Los Angeles, Plaintiff  
Vs  
Terry Mays et al., Defendants

Pending, Apr. 1, 1927.  
Interlocutory decree rendered June 11, 1928  
Final judgment in favor of Plaintiff as  
per this map, rendered May 23, 1930.

D:79-183, O.R. 10066-73.





V 3888

For Continuation See Sheet 2.

8888 A

