

MAP  
 SHOWING THE LAND TO BE CONDEMNED  
 FOR  
 PUBLIC STREET PURPOSES  
 BETWEEN  
 PINE LANE AT BEVERLY GLEN BOULEVARD  
 AND  
 BEVERLY GLEN BOULEVARD AT A POINT  
 APPROXIMATELY ONE HUNDRED (100) FEET  
 SOUTHERLY OF SCENIC ROAD  
 IN THE  
 CITY OF LOS ANGELES, CAL.

IN ACCORDANCE WITH ORDINANCE NO. 55760 NEW SERIES

JOHN C. SHAW, CITY ENGINEER

AUGUST 1926

Land condemned per this map established as Von Nuys Blvd. - Ord. 72281.  
 Von Nuys Blvd. renamed Beverly Glen Blvd. - Ord. 73107.

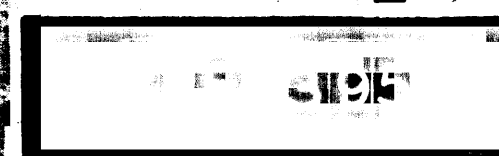
SCALE 1"=50'

NOTE: LAND TO BE CONDEMNED SHOWN COLORED RED.

Superior Court Case No. 206355  
 Suit for Condemnation  
 Filed Sept. 24 1926  
 City of Los Angeles, Plaintiff  
 vs  
 C. J. Hoffman et al, Def.

Pending Apr. 1 1927  
 Final judgment in favor of Plff.  
 as per map, rendered July 22, 1929.

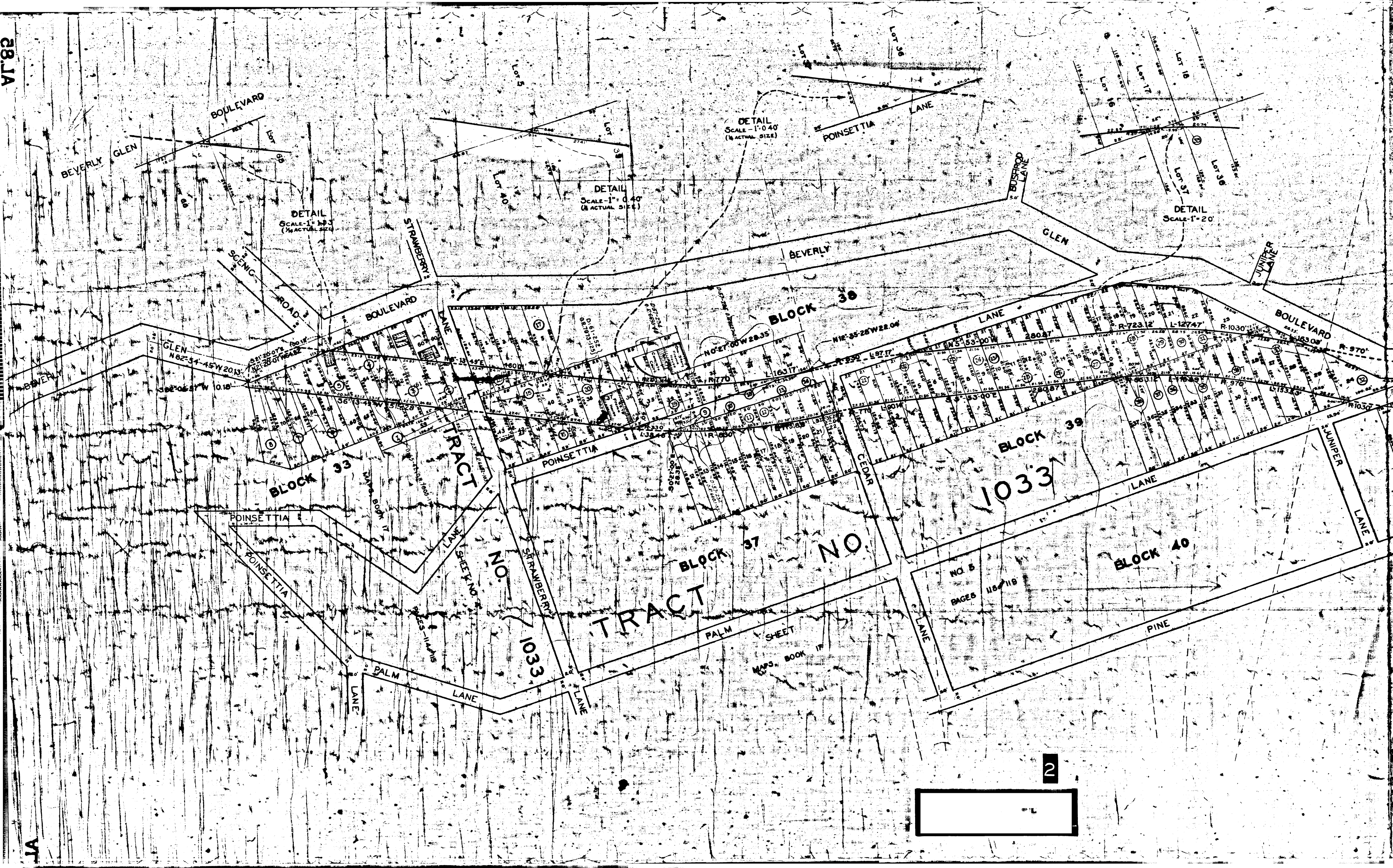
D:75-132, O.R. 8194-396





28 JA

JA



2