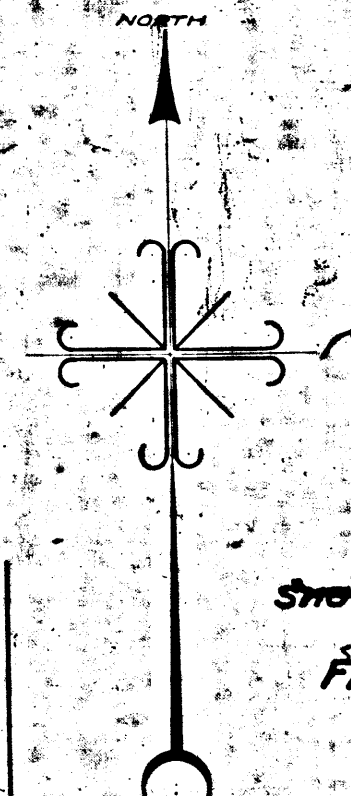


0088 A

0088 A

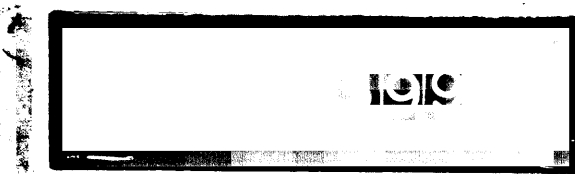


MAP
 SHOWING THE LAND TO BE CONDEMNED
 FOR THE WIDENING OF
 FIFTY-FOURTH STREET
 BETWEEN
 VERMONT AVENUE
 AND
 NORMANDIE AVENUE
 IN THE
 CITY OF LOS ANGELES CALIFORNIA

IN ACCORDANCE WITH ORDINANCES NOS. 53889 AND 34794
 JOHN C. SHAW CITY ENGINEER JUNE 1926
 SCALE 1"=100'

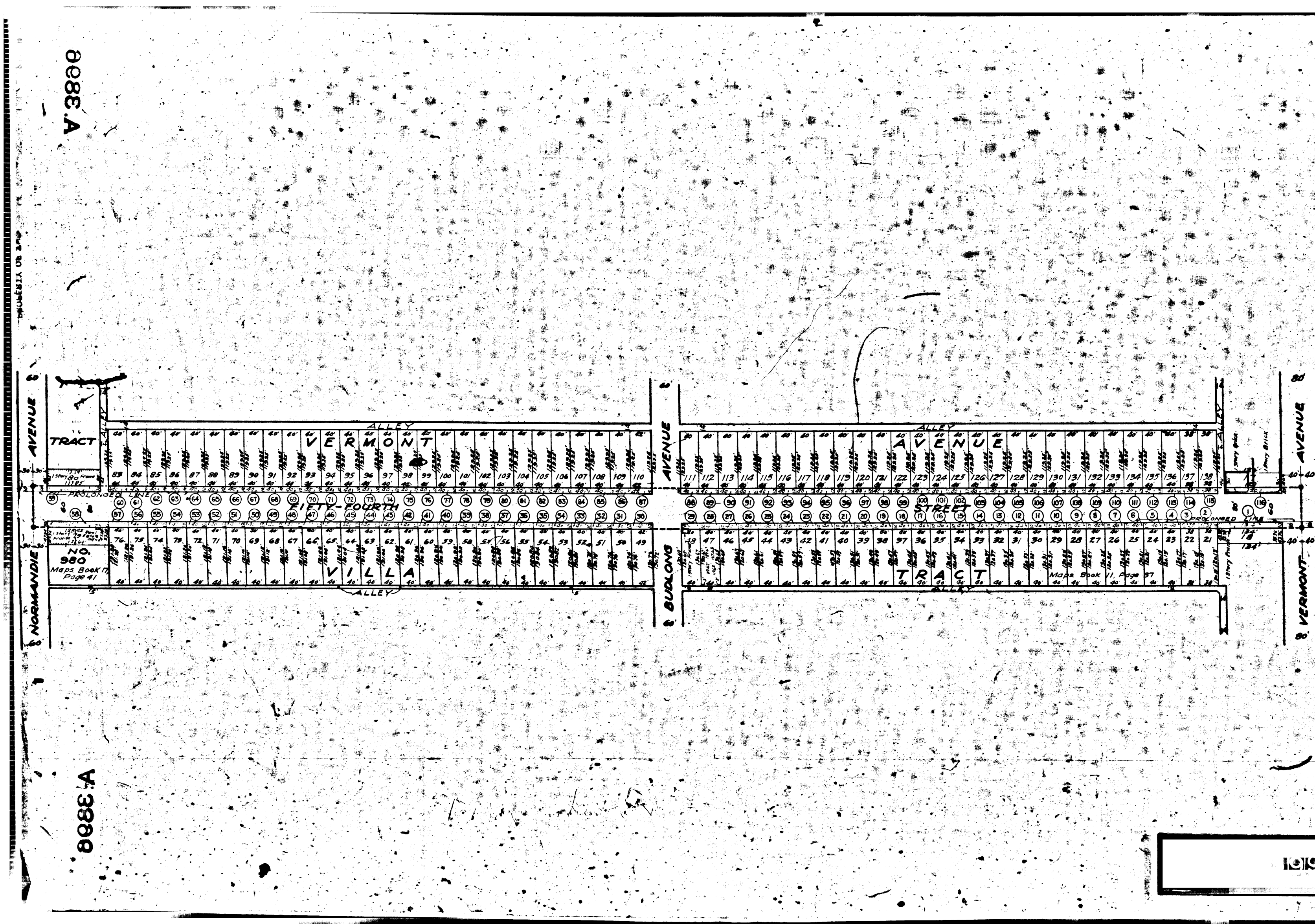
Note: Land to be condemned shown colored red.
 Dotted lines and dimensions show property holdings
 in those cases where they differ from recorded
 subdivisions.
 The figures in circles indicate the parcel numbers
 as set forth in Paragraph IX of the complaint.

Superior Court Case No. 208405
 Suit for Condemnation
 Filed Oct. 18th 1926
 City of Los Angeles, Plaintiff
 Vs
 L. R. Sickler et al., Defendants.
 Pending Apr. 1 1927
 Interlocutory decree rendered Feb. 1, 1928
 Judg. Bk. 677-88
 Case dismissed Jan. 26th 1929.



A.3886

0088 A



0088 A