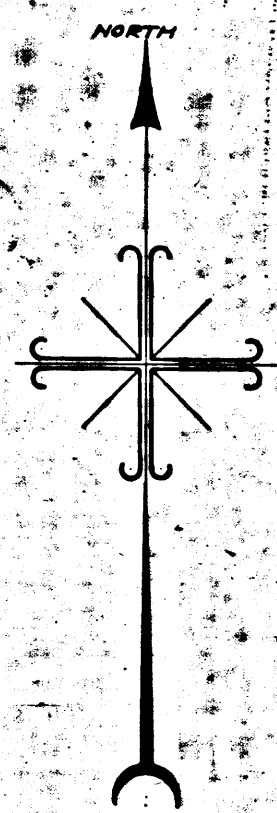


Superior Court Case No. 208272
 Suit for Condemnation
 Filed Oct. 15th 1926
 City of Los Angeles, Plaintiff
 Vs
 William J. Button et al., Def.
 Pending April 1927.
 Interlocutory decree rendered Feb. 1, 1928
 Judg. Bk. 651-793
 Proceedings abandoned Mar. 3rd
 1930. For judgments of dismissal
 see case.

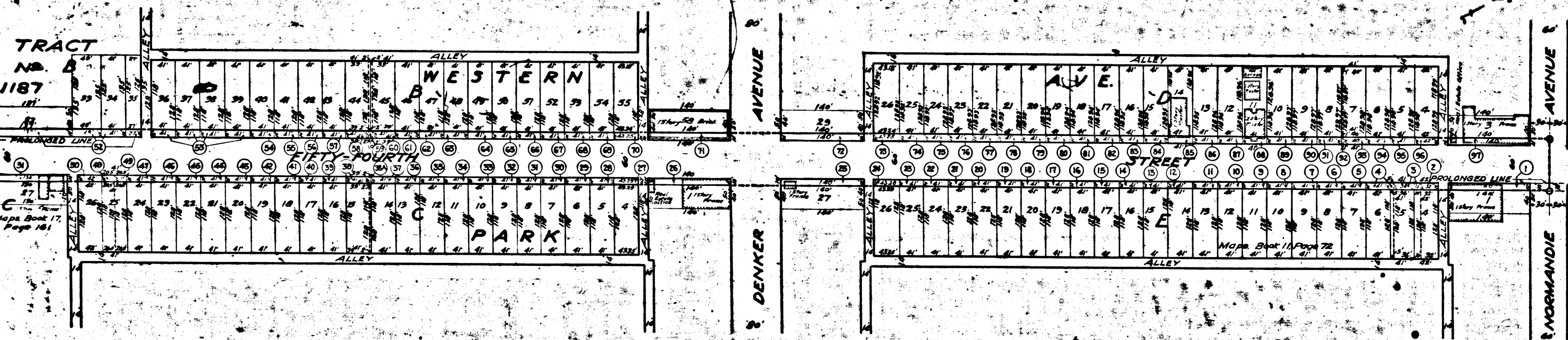


MAP
 SHOWING THE LAND TO BE CONDEMNED
 FOR THE WIDENING OF
FIFTY-FOURTH STREET
 BETWEEN
NORMANDIE AVENUE
 AND
WESTERN AVENUE
 IN THE
CITY OF LOS ANGELES CALIFORNIA

IN ACCORDANCE WITH ORDINANCES NOS 53815 AND 54793
 JOHN G. SHAW CITY ENGINEER JUNE 1926
 SCALE 1"=100'

Note: Land to be condemned shown colored red.
 Dotted lines and dimensions show property holdings in those
 cases where they differ from recorded subdivisions.
 The figures in circles indicate the parcel numbers as set
 forth in Paragraph IX of the complaint.
 Sht. 24

2008.A WESTERN AVENUE 1187



2008.A

A. 3905