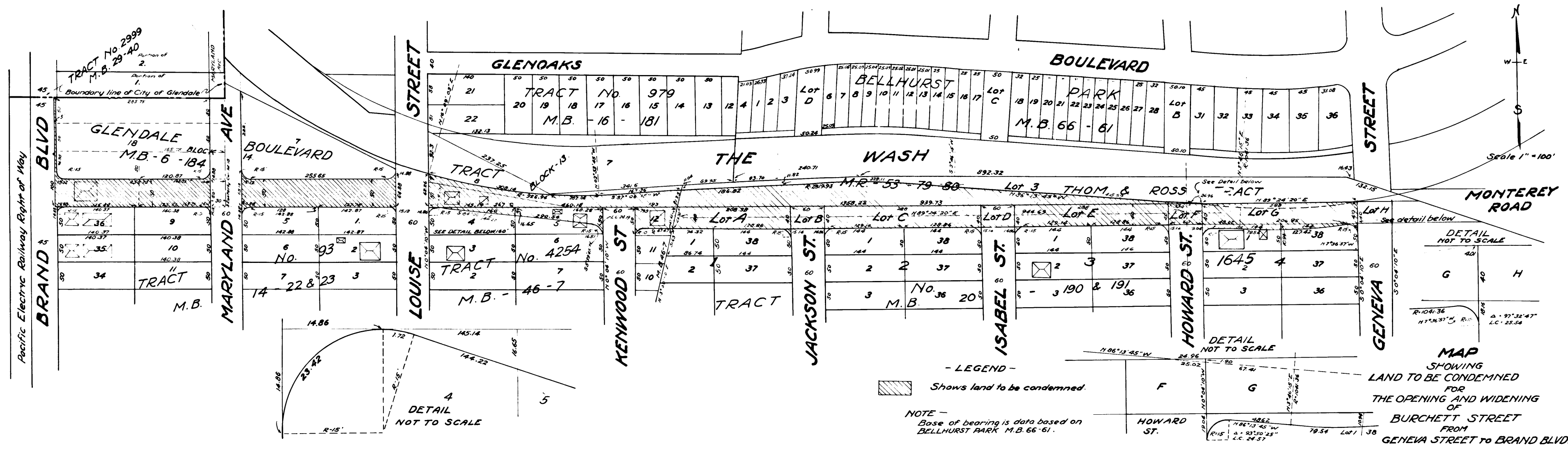


EXHIBIT "D".



Superior Court Case No. 55-186
 Filed December 1, 1955
 State of California vs.
 The City of Glendale
 et al.

- LEGEND -
 Shows land to be condemned.
 NOTE -
 Base of bearing is data based on
 BELLHURST PARK M.B. 66-61.

MAP
 SHOWING
 LAND TO BE CONDEMNED
 FOR
 THE OPENING AND WIDENING
 OF
 BURCHETT STREET
 FROM
 GENEVA STREET TO BRAND BLVD.

C.F. 1402 -