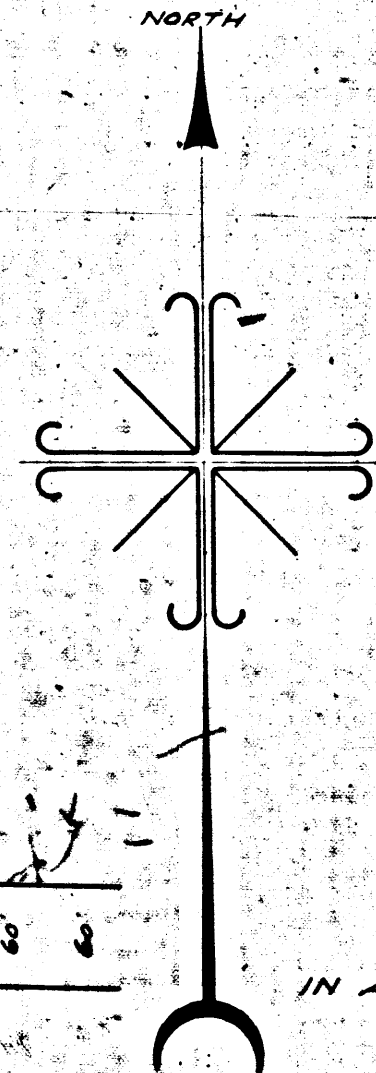
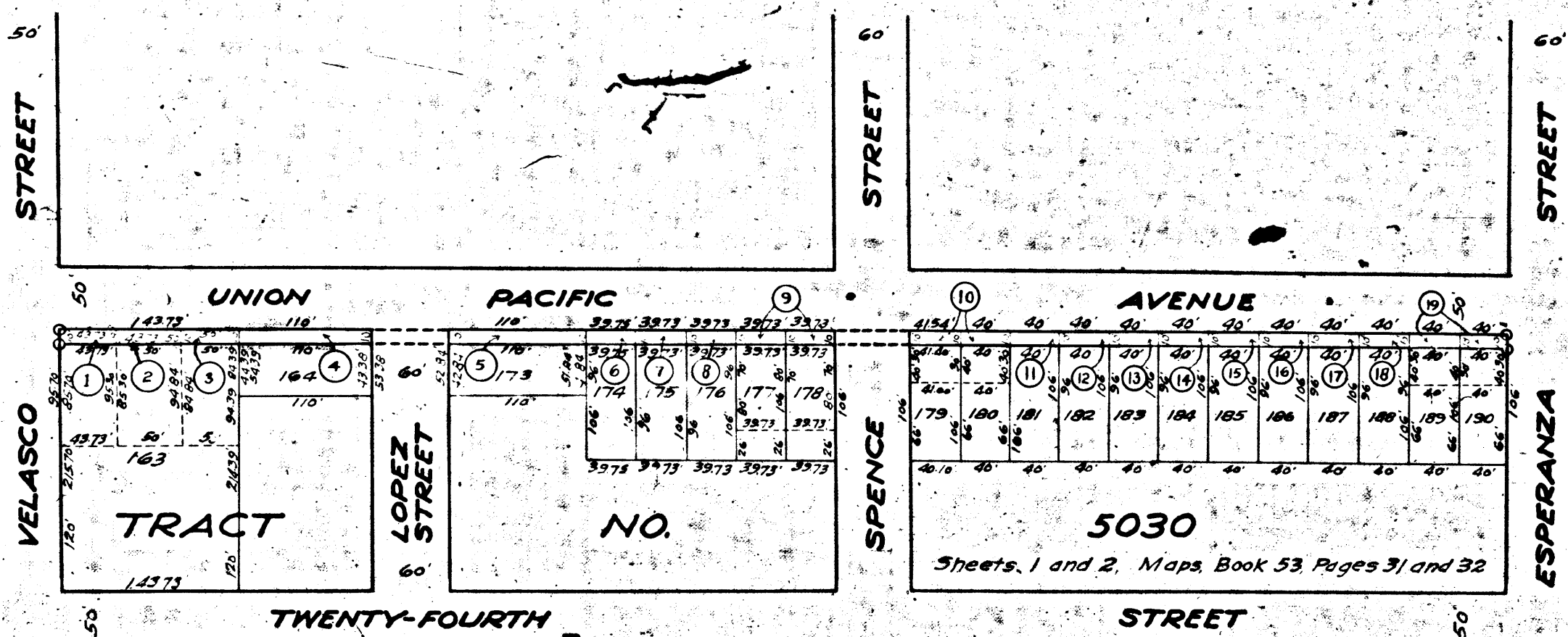


8008.A

8008.A

8008.A

CITY OF LOS ANGELES
PROPERTY OF THE



MAP
SHOWING THE LAND TO BE CONDEMNED
FOR THE WIDENING OF
UNION PACIFIC AVENUE
 BETWEEN
ESPERANZA STREET
 AND
VELASCO STREET
 IN THE
CITY OF LOS ANGELES CALIFORNIA

IN ACCORDANCE WITH ORDINANCES NOS. 53729 AND 54795
 JOHN C. SHAW, CITY ENGINEER JUNE 1926
 SCALE: 1"=100'

Note Land to be condemned shown colored red.
 Dotted lines and dimensions show property holdings in those cases where they differ from recorded subdivisions.
 Numbers in circles indicate the parcel numbers as set forth in paragraph VIII of the complaint.

Superior Court Case No. 209137
 Suit for Condemnation
 Filed Oct. 22nd 1926
 City of Los Angeles, Plaintiff
 Vs
 George W. Hurst et al., Def.

Pending Apr. 1, 1927
 Interlocutory decree rendered, Mar. 30, 1928
 Final judgment in favor of Plaintiff as per
 this map, rendered February 8th, 1929.

D:70-241, O.R. 7367-312
 Sht. 47

8008.A

8008.A