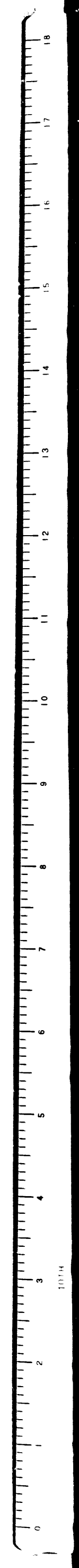


Superior Court Case No. 206004  
 Suit for Condemnation  
 Filed Sept. 20th 1926  
 City of Glendale, Plaintiff  
 vs  
 Francis Marion Peckham et al, Def.  
 Case dismissed June 22nd 1927

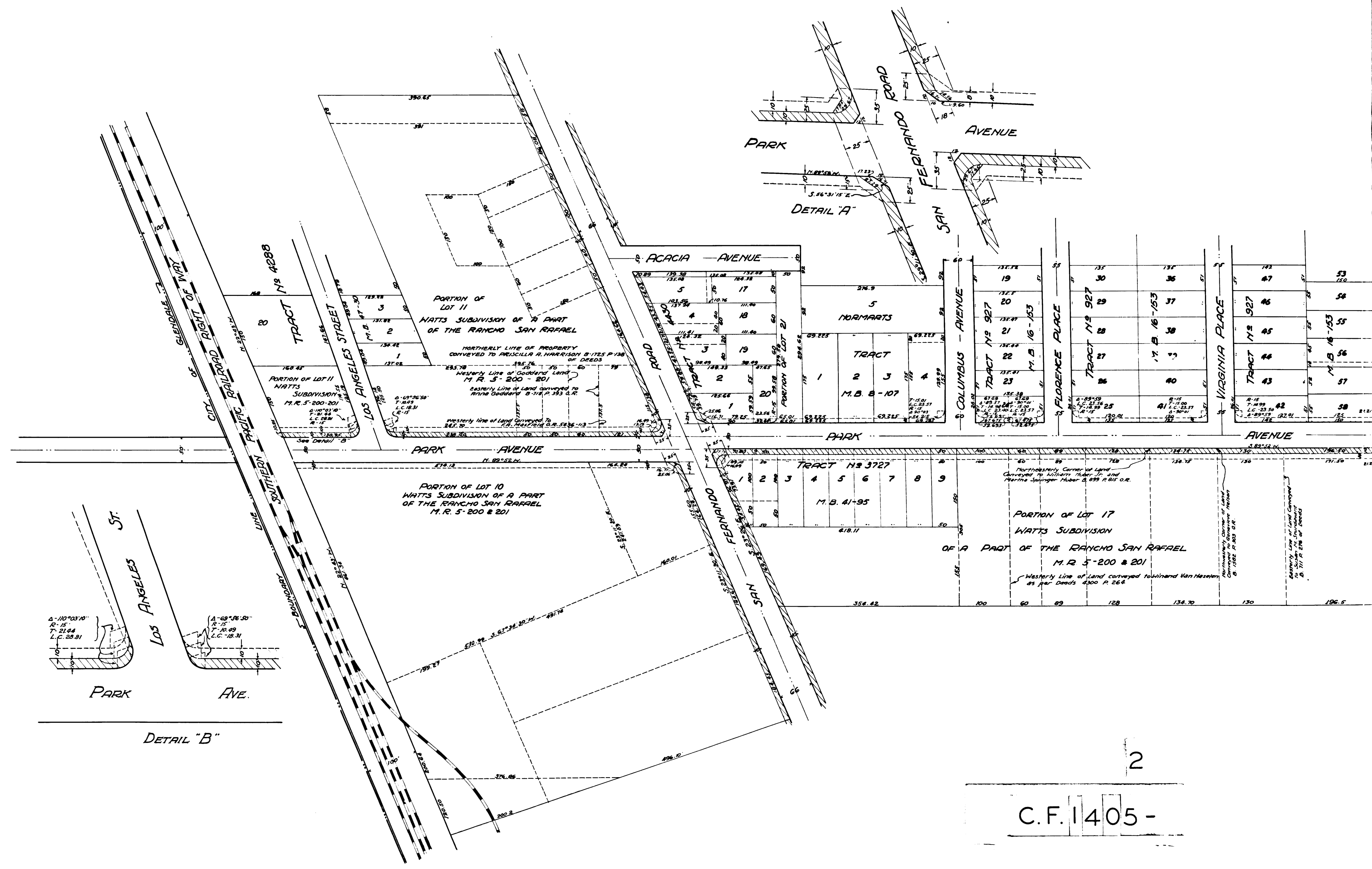
MAP No 1132  
 SHOWING LAND TO BE CONDEMNED  
 FOR THE WIDENING OF  
 PARK AVENUE  
 FROM THE WESTERLY LINE OF GLENDALE AVENUE  
 TO THE WESTERLY BOUNDARY LINE OF THE CITY OF GLENDALE  
 ALL IN THE  
 CITY OF GLENDALE, CALIFORNIA  
 SCALE 1"=100' JANUARY 1926

LEGEND -  
 ORANGE CROSS-HATCHING SHOWS LAND TO BE CONDEMNED  
 BLACK CROSS-HATCHING SHOWS LAND UNDER CONDEMNATION

C.F. 1405 -



0 2 4 6 8 10 12 14 16 18 20 22 24 26 28 30 32 34 36 38 40 42 44 46 48 50 52 54 56 58 60 62 64 66 68 70 72 74 76 78 80 82 84 86 88 90 92 94 96 98 100  
SOUTH



C.F. 1405 -