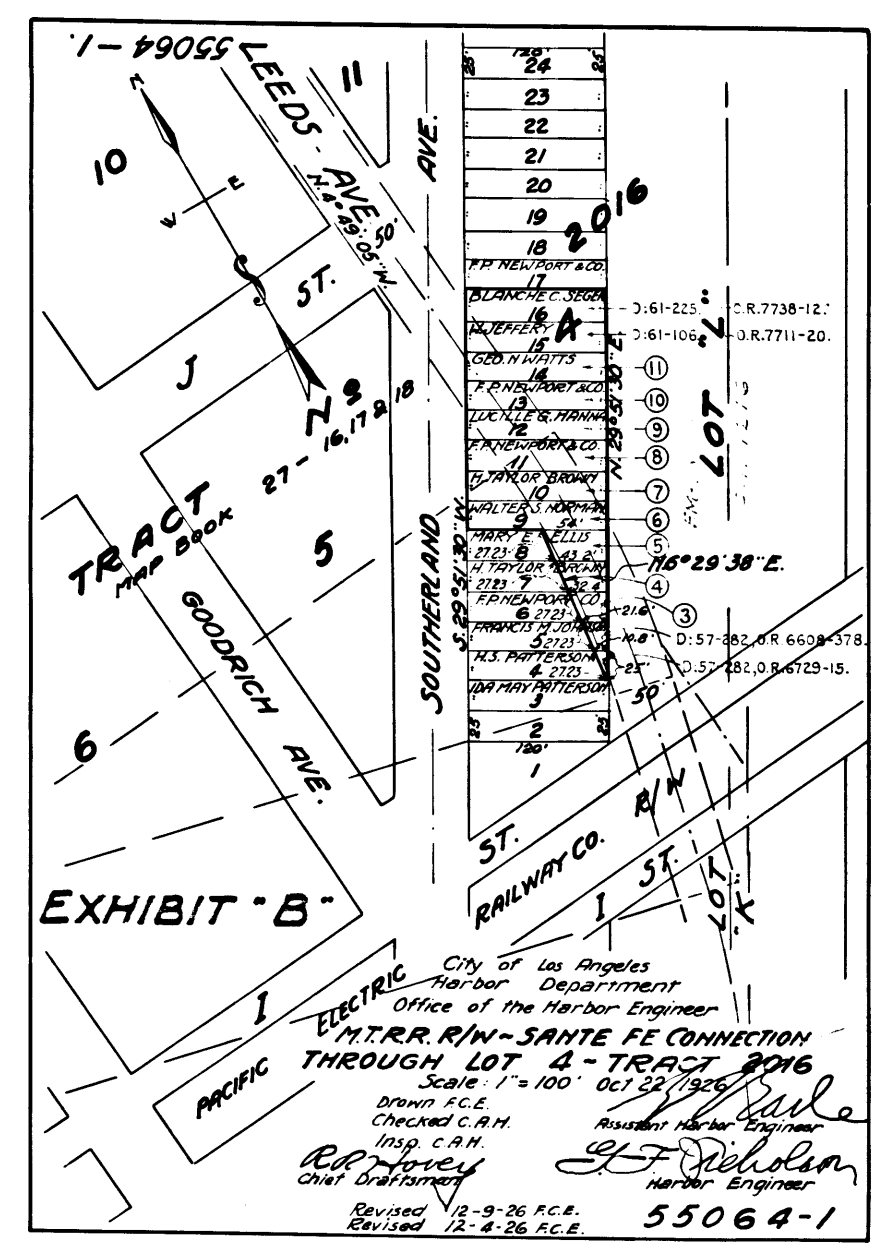
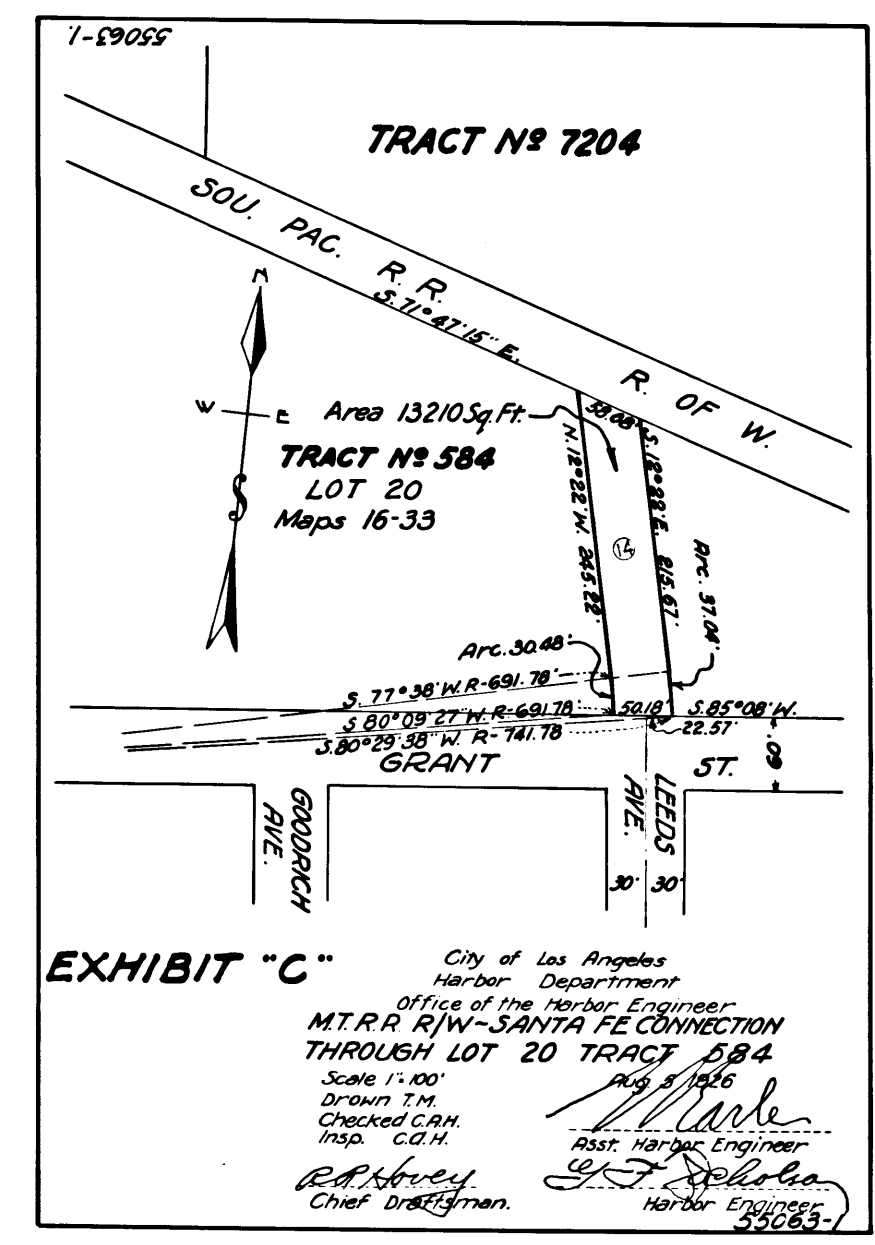


EXHIBIT "D"

City of Los Angeles
 Harbor Department
 Office of the Harbor Engineer
 M.T.R.R. R/W - SANTA FE CONNECTION
 THROUGH LOTS 2, 3, 4, 7, 8, & 9 TRACT 584
 Scale: 1" = 100'
 Drawn F.C.E.
 Checked C.A.H.
 Insp. C.D.H.
 Chief Draftsman
 August 9, 1926
 Assistant Harbor Engineer
 Harbor Engineer
 9726.



City of Los Angeles
 Harbor Department
 Office of the Harbor Engineer
 M.T.R.R. R/W - SANTA FE CONNECTION
 THROUGH LOT 4 - TRACT 584
 Scale: 1" = 100'
 Drawn F.C.E.
 Checked C.A.H.
 Insp. C.D.H.
 Chief Draftsman
 Revised 12-9-26 F.C.E.
 Revised 12-8-26 A.C.E.
 55064-1



City of Los Angeles
 Harbor Department
 Office of the Harbor Engineer
 M.T.R.R. R/W - SANTA FE CONNECTION
 THROUGH LOT 20 TRACT 584
 Scale: 1" = 100'
 Drawn T.M.
 Checked C.A.H.
 Insp. C.D.H.
 Chief Draftsman
 August 9, 1926
 Assistant Harbor Engineer
 Harbor Engineer
 55063-1

Superior Court Case No. 213747
 Suit for Condemnation
 Filed Dec. 17th 1926
 City of Los Angeles, Plaintiff
 Vs
 Wilbur D. Patterson et al., Def.
 Pending Apr. 1, 1927
 Dismissed as to Parcels 14, 15, 16, 17, Oct 9, 1928
 Final judgment in favor of Plt'ff. as to Parcels 3 to 11 incl.,
 as per this map, rendered April 23rd., 1929.
 D:75-47, O.R.7447-295.

C.F. 1414 -