

Exhibit "A"
ACQUISITION AND IMPROVEMENT DISTRICT N°60
OF THE COUNTY OF LOS ANGELES
FOR
THE OPENING, EXTENDING AND IMPROVEMENT OF AND WORK UPON
MUSCATEL AVENUE

MAP SHOWING PROPERTY TO BE ACQUIRED IN ACCORDANCE WITH THE
 PROVISIONS OF THE ACQUISITION AND IMPROVEMENT ACT OF 1925.
 APPROVED MAY 23RD 1925, COMMONLY KNOWN AS THE "MATTOON ACT".

J. E. ROCKHOLD COUNTY SURVEYOR

SCALE 1" = 80' NOVEMBER - 1926

SUBMITTED BY
Alfred Jones
 ALFRED JONES
 CHIEF DEPUTY

APPROVED:
J. E. Rockhold
 J. E. ROCKHOLD
 COUNTY SURVEYOR

APPROVED AS TO FORM:
 EVERETT W. MATTOON, COUNTY COUNSEL
 BY *Alfred Jones*
 ASSISTANT COUNTY COUNSEL.

LEGEND

LAND SOUGHT TO BE ACQUIRED SHOWN IN RED
 NUMBERS IN CIRCLES INDICATE PARCELS SOUGHT TO BE CONDEMNED
 THE PARCELS ARE DESCRIBED IN PARAGRAPH VII OF THE COMPLAINT
 PORTION COLORED RED SHOWS LOCATION, GENERAL ROUTE, AND
 TERMINI OF PUBLIC ROAD TO BE CONDEMNED.

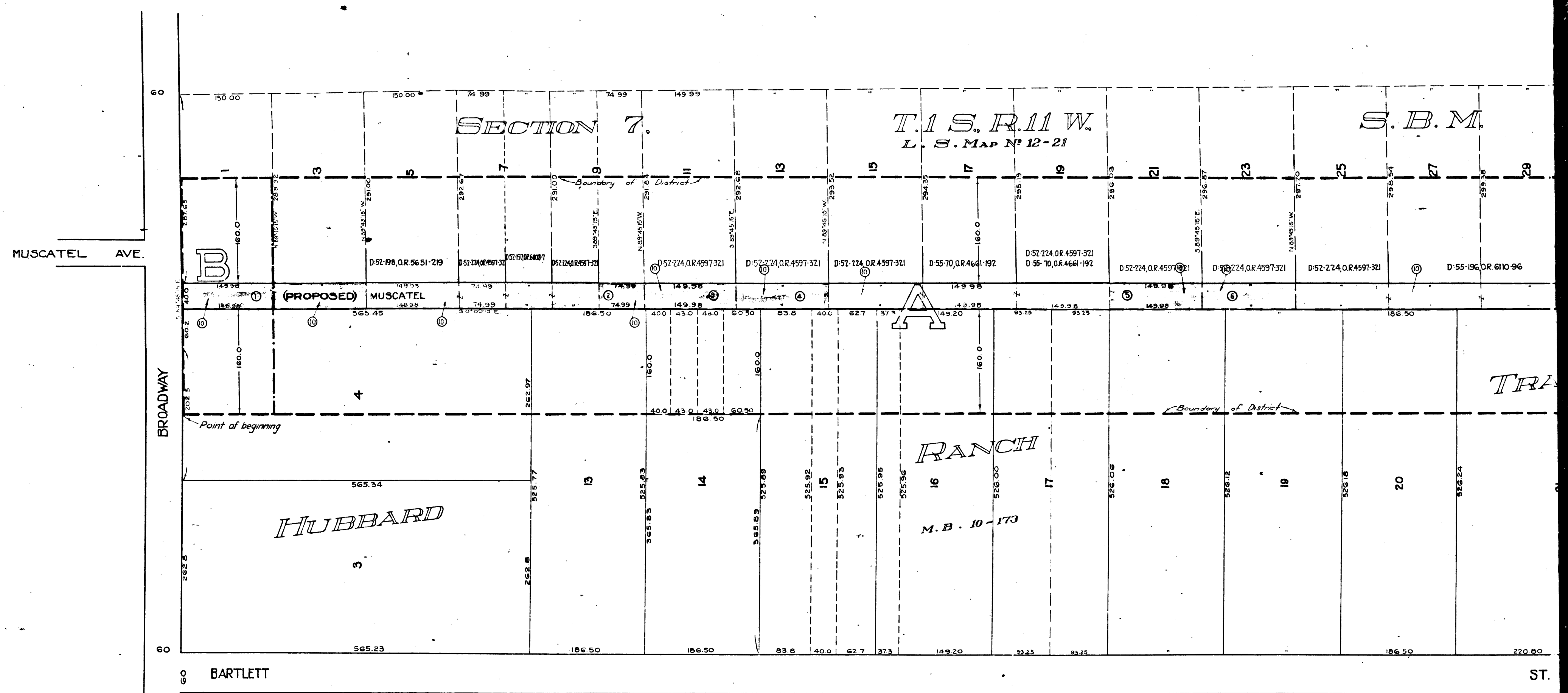
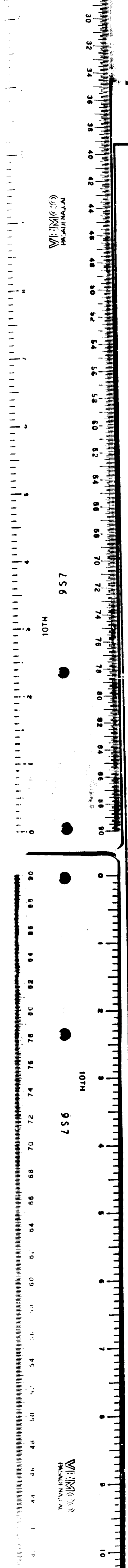
Superior Court Case No. 214250
Suit For Condemnation
Filed Dec. 27th 1926
County of Los Angeles, Plaintiff
vs
B. G. Adams et al., Defendants.
Pending Apr. 1st 1927
Final judgment in favor of Pltff. as per
map rendered Dec. 26th 1928
D-71-156, O.R. 7415-65
Sheet 44

C.F. 1416 -

NEG. 459

A & L DISTRICT N° 60	
DRAWN BY H.G.	10-26
TRACED BY H.G.	10-26
CHECKED BY R.B.H.	10-26

MUSCATEL AVE. DISTRICT N° 60



2
C.F. 1416 -