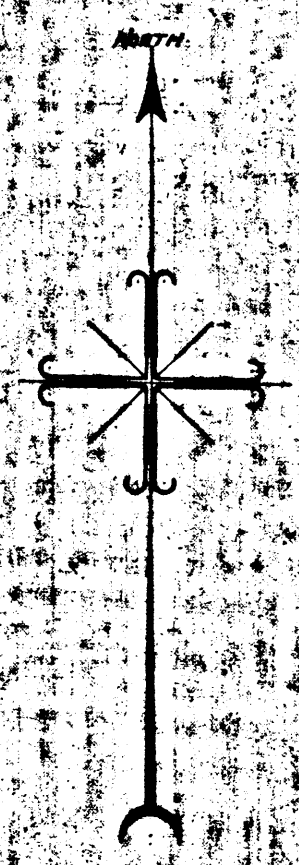
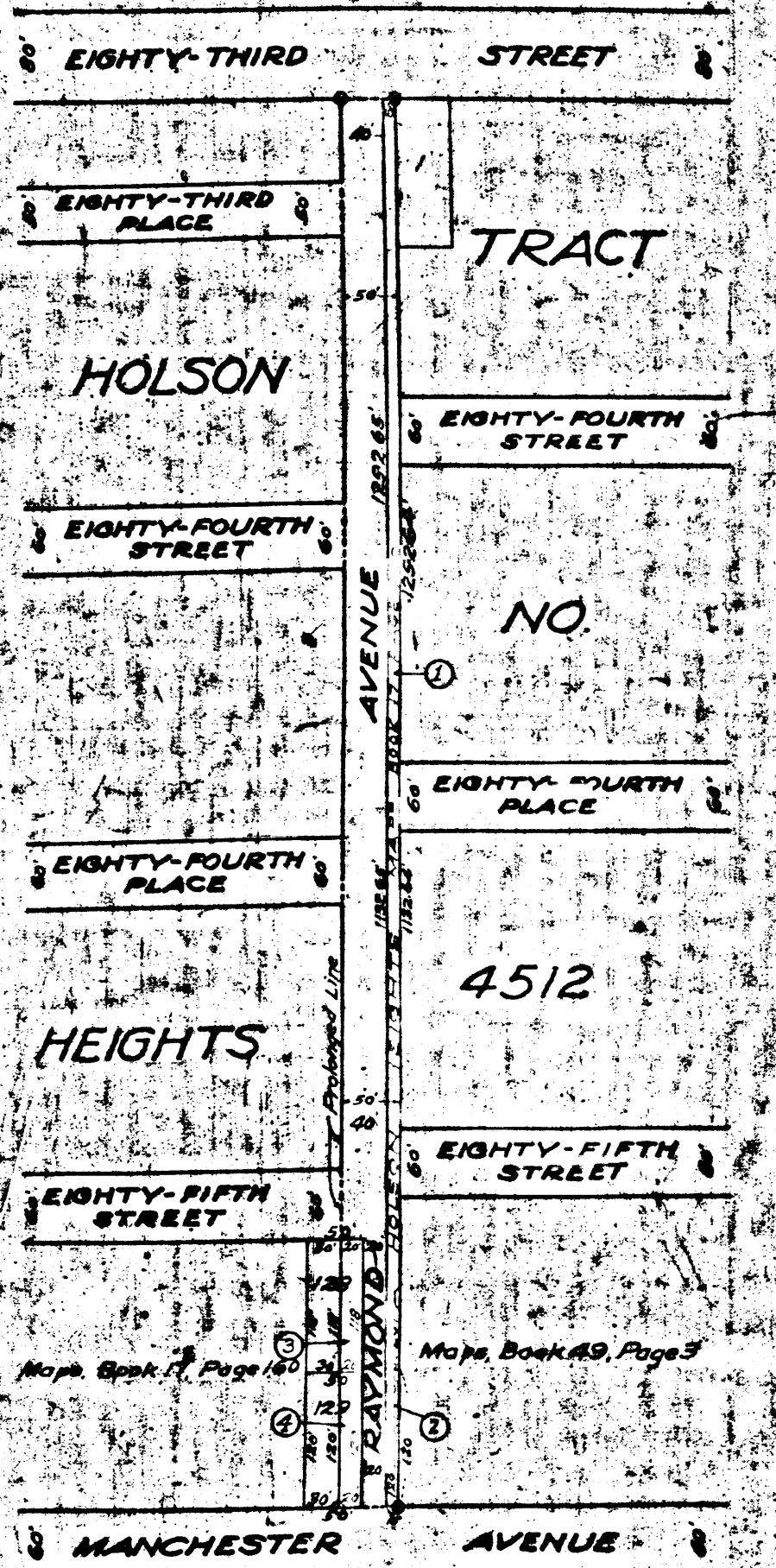


8004 A

8004 A



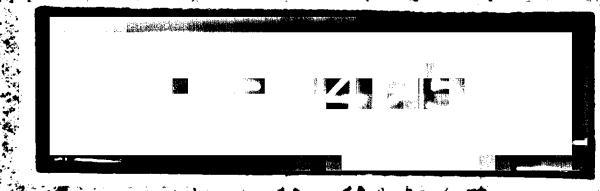
MAP
 SHOWING LAND TO BE CONDEMNED
 FOR THE OPENING, WIDENING AND EXTENDING OF
RAYMOND AVENUE
 BETWEEN
EIGHTY-THIRD STREET
 AND
MANCHESTER AVENUE
 IN THE
 CITY OF LOS ANGELES, CALIFORNIA
 IN ACCORDANCE WITH ORDINANCES NOS. 54411 AND 55775
 JOHN C. SHAW, CITY ENGINEER, AUGUST, 1926
 SCALE: 1"=100'

Note: Land to be condemned shown colored red.
 Dotted lines and dimensions show property holdings
 in those cases where they differ from recorded subdivisions.
 Note: Figures in circles indicate parcel numbers as set
 forth in paragraph VIII of the complaint.

Superior Court Case No. 217313
 Suit for Condemnation
 filed Feb. 1, 1927
 City of Los Angeles, Plaintiff
 vs.
 Albert B. Holson et al., Def.

Interlocutory judgment rendered
 by Judge E. B. Lodge, Sk. 631-270
 Final judgment in favor of Plaintiff
 as per map, rendered Mar. 6, 1931.

D: 84-96, O.R. 10698-101



A. 4069

8003 A

8003 A