

MAP

MAP SHOWING LAND TO BE CONDEMNED FOR THE
OPENING AND LAYING OUT OF

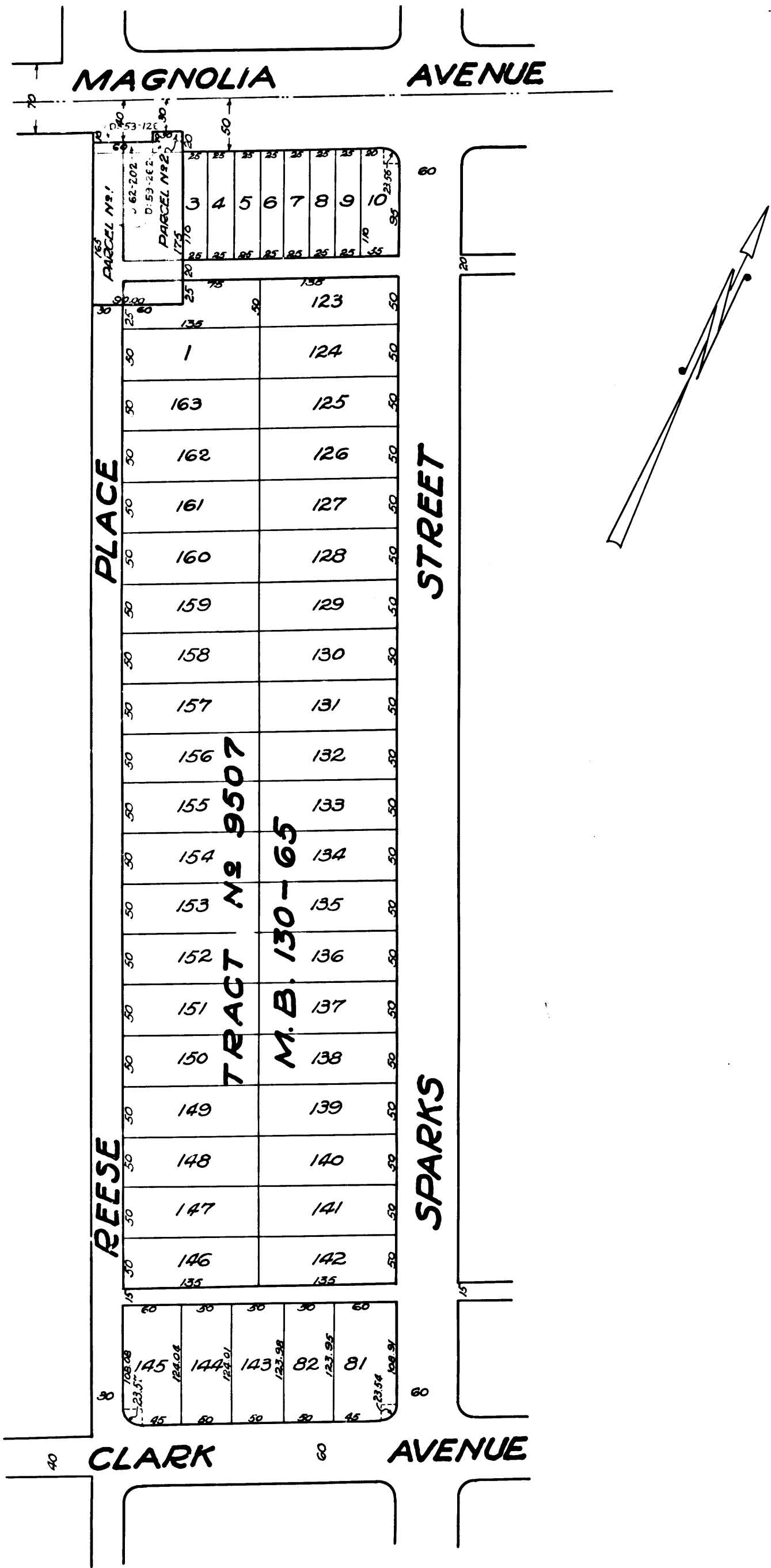
REESE PLACE

BETWEEN CLARK AVENUE AND MAGNOLIA
AVENUE AND THE FIRST ALLEY LYING SOUTHERLY
OF MAGNOLIA AVENUE BETWEEN REESE PLACE
AND SPARKS STREET, ALL LYING WITHIN THE
CITY OF BURBANK AND SHOWING THE DISTRICT
TO BE ASSESSED TO PAY THE COSTS AND
EXPENSES THEREOF.

SCALE 1" = 100'

MAP No 995

Sht. 40
Superior Court Case No. 216704
Suit for Condemnation
Filed Feb. 3rd 1927
City of Burbank, Plaintiff
Vs
Clifford F. Reid et al., Def.



C.F. 1429-