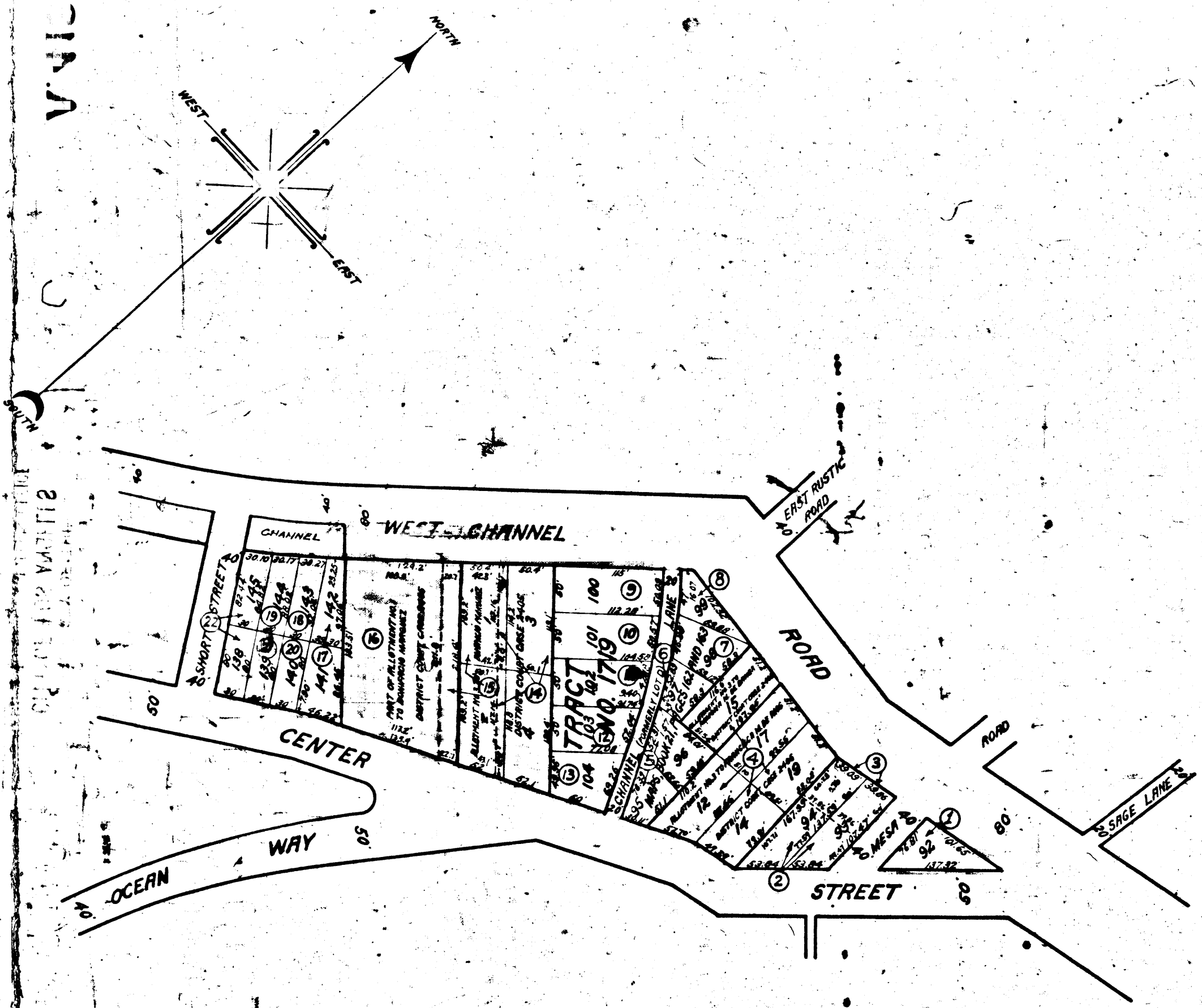


V.410

CS14.A



**MAP**  
 SHOWING LAND TO BE CONDEMNED FOR  
**PUBLIC PARK PURPOSES**  
 LYING BETWEEN  
**CENTER STREET**  
 AND  
**WEST CHANNEL ROAD**  
 AND  
**NORTHEASTERLY OF SHORT STREET**  
 IN THE  
**CITY OF LOS ANGELES, CAL.**

IN ACCORDANCE WITH ORDINANCES NOS. 54566 AND 56195  
 JOHN C. SHAW - CITY ENGINEER      NOVEMBER 1926  
 SCALE 1 INCH = 100 FEET

NOTE - LAND TO BE CONDEMNED SHOWN OUTLINED IN RED  
 BROKEN LINES AND FIGURES SHOW PROPERTY HOLDINGS  
 IN CASES WHERE THEY DIFFER FROM RECORDED SUBDIVISIONS.

**A. 4120**

Note: Figures in circles indicate parcel numbers  
 as set forth in paragraph IX of the complaint.

Superior Court Case No. 218259  
 Suit for Condemnation  
 Filed Feb. 25<sup>th</sup> 1927  
 City of Los Angeles, Plaintiff  
 Vs  
 W. H. Clay et al, Defendants.

Interlocutory judgment rendered  
 July 3<sup>rd</sup> 1928, Judg. Bk. 693-5  
 Proceedings abandoned Oct. 1<sup>st</sup>  
 1929.

V.410

CS14.A

