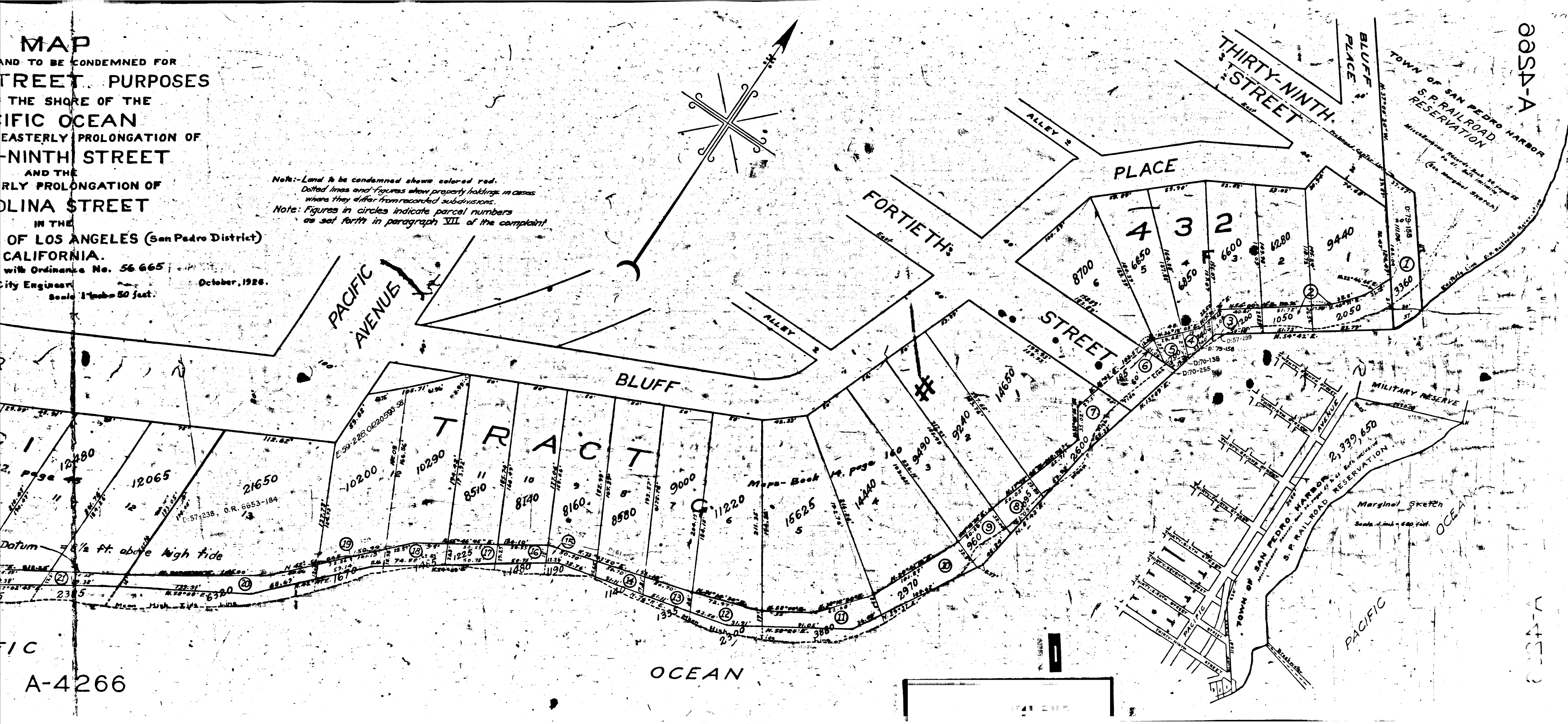


MAP
AND TO BE CONDEMNED FOR
STREET PURPOSES
THE SHORE OF THE
PACIFIC OCEAN
EASTERLY PROLONGATION OF
THIRTY-NINTH STREET
AND THE
WESTERLY PROLONGATION OF
BLUFF STREET

IN THE
CITY OF LOS ANGELES (San Pedro District)
CALIFORNIA.
 with Ordinance No. 56 665;
 City Engineer: _____ October, 1926.
 Scale: 1"=50 feet.

Note: Land to be condemned shows colored red.
Dotted lines and figures show property holdings in cases
where they differ from recorded subdivisions.
Note: Figures in circles indicate parcel numbers
as set forth in paragraph XIII of the complaint.



PLAT
 A-4266

0934-A

0934-A

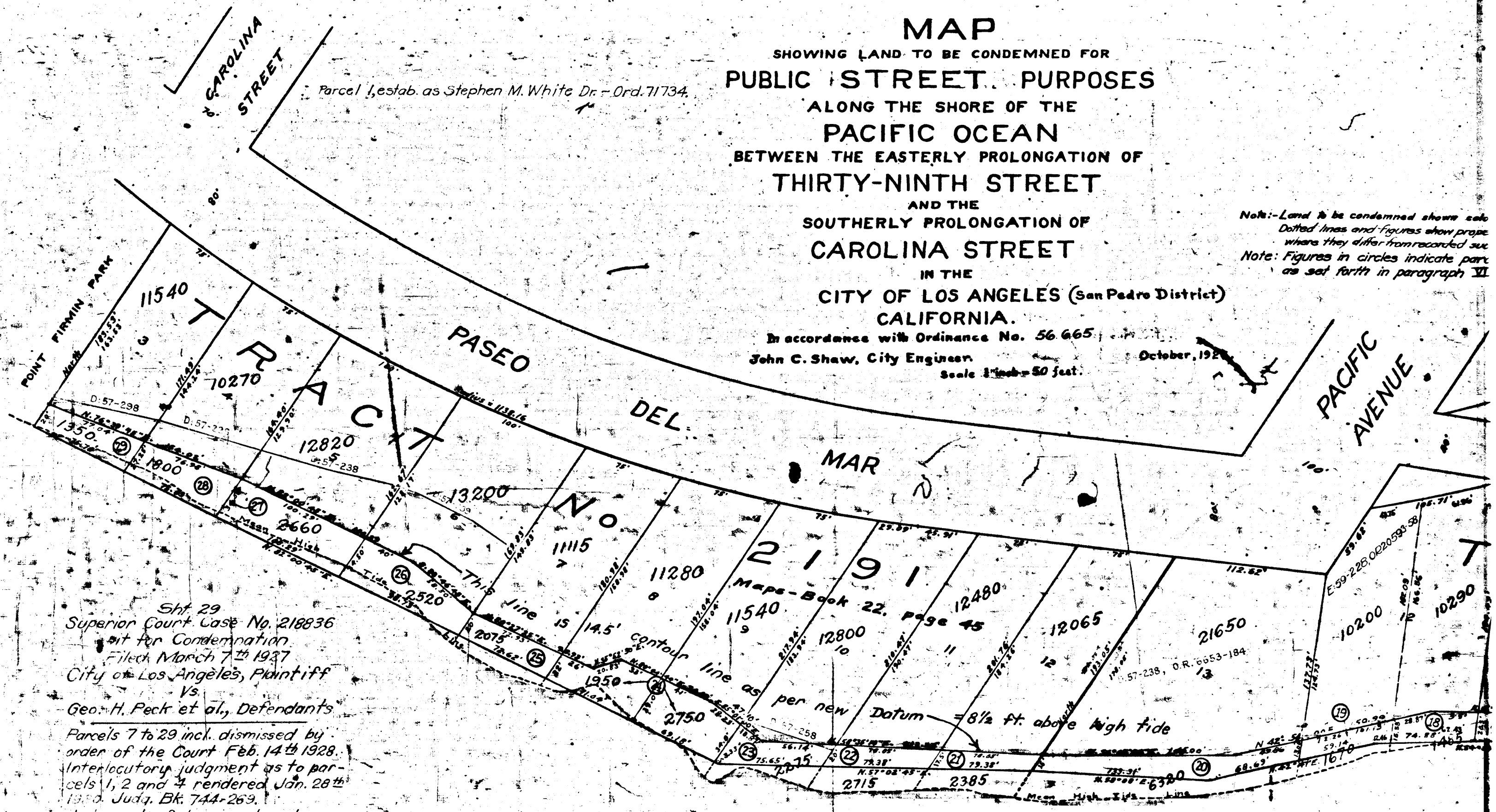
0054-A

0054-A

MAP
 SHOWING LAND TO BE CONDEMNED FOR
PUBLIC STREET PURPOSES
 ALONG THE SHORE OF THE
PACIFIC OCEAN
 BETWEEN THE EASTERLY PROLONGATION OF
THIRTY-NINTH STREET
 AND THE
 SOUTHERLY PROLONGATION OF
CAROLINA STREET
 IN THE
CITY OF LOS ANGELES (San Pedro District)
 CALIFORNIA.

In accordance with Ordinance No. 56 665
 John C. Shaw, City Engineer
 October, 1928
 Scale 1 inch = 50 feet

Note: Land to be condemned shown with
 Dotted lines and figures show areas
 where they differ from recorded surveys.
 Note: Figures in circles indicate parcels
 as set forth in paragraph VI



Sht. 29
 Superior Court Case No. 218836
 Suit for Condemnation
 Filed March 7th 1937
 City of Los Angeles, Plaintiff
 Vs.
 Geo. H. Peck et al., Defendants
 Parcels 7 to 29 incl. dismissed by
 order of the Court Feb. 14th 1928.
 Interlocutory judgment as to par-
 cels 1, 2 and 4 rendered Jan. 28th
 1930. Judg. Bk. 744-269.
 Judgment of dismissal as to par-
 cels 2 rendered March 17th 1930.
 Final judgment as to parcels 1 and 4
 rendered May 12th, 1930.
 D. 79-163, Judg. Bk. 750-248

PACIFIC
 A-426