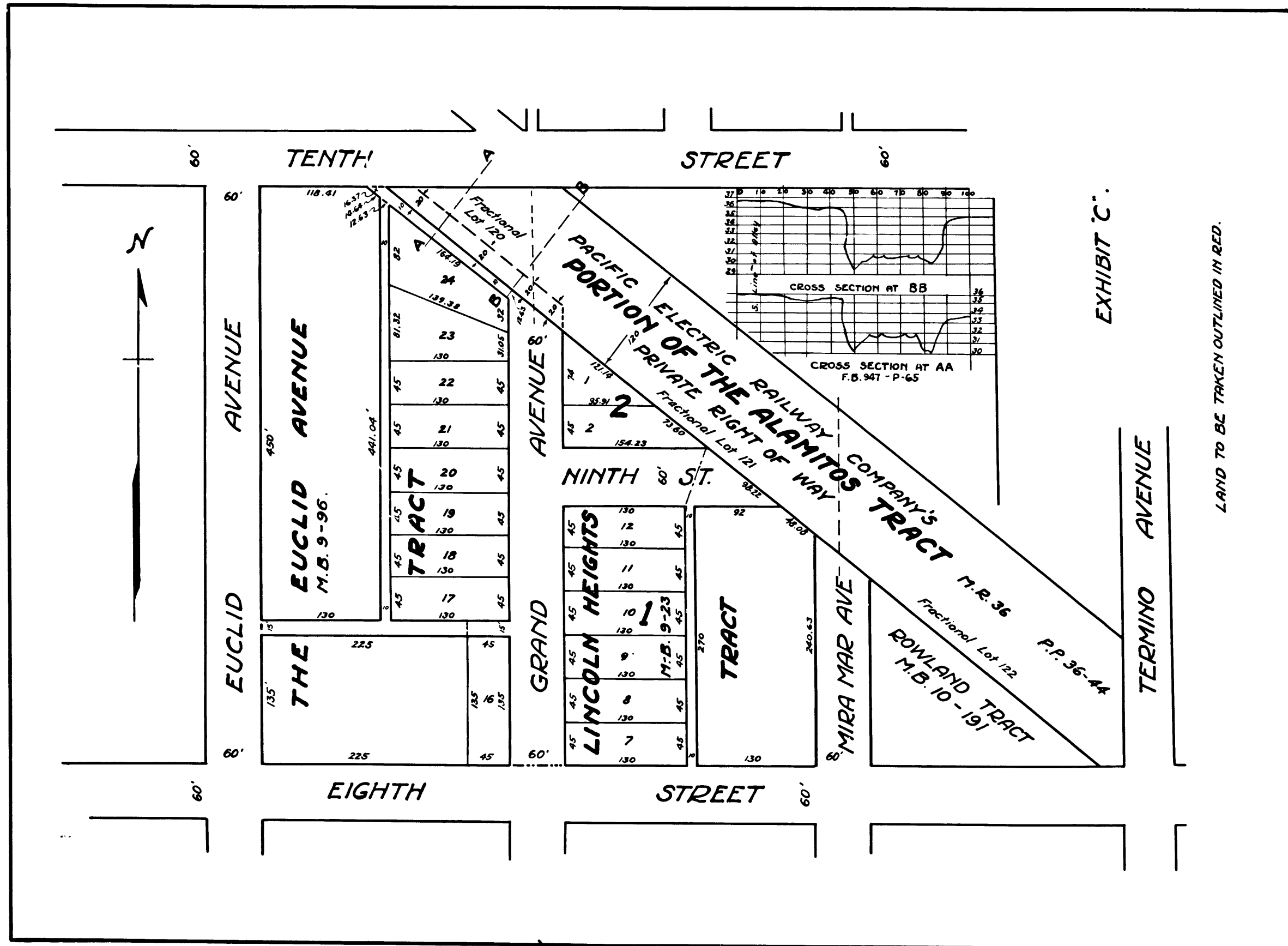


0
2
4
6
8
10
12
14
16
18
20
22
24
26
28
30
32
34
36
38
40
42
44
46
48
50
52
54
56
58
60
62
64
66
68
70
72
74
76
78
80
82
84
86
88
90



Superior Court Case No. L.B.C-824
 Suit for Condemnation
 Filed Mar. 1st 1927
 City of Long Beach, Plaintiff
 Vs
 Pacific Electric Ry. Co. et al., Def.
 Interlocutory decree rendered Oct. 11, 1927
 Pending Feb. 27, 1928
 Final Judgment in favor of Plaintiff, as per
 map, rendered June 12, 1928
 D:65-230 O.R. 7100-384
 Sht. 30

Condemned portion named Grand Ave. L:80-186 Res. C-4587.

C.F. 1433-