

Superior Court Case No. 218364
 Suit for Condemnation
 Filed Feb. 28th 1927
 County of Los Angeles, Pltff.
 Vs
 Harrison L. Baker et al., Def.
 Condemnation denied and case
 dismissed - May 22nd 1928.

COUNTY STREET OPENING DISTRICT N^o 76
 MAP OF
 PROPOSED OPENING and EXTENDING
 OF
SENECA STREET
 BETWEEN EASTERLY TERMINUS AND PROPOSED CARMELO
 AVENUE;
 PROPOSED OPENING
 OF
CARMELO AVENUE
 BETWEEN SAN PASQUAL ST. AND ONEIDA ST.;
 PROPOSED WIDENING
 OF
SANTA ANITA AVENUE
 BETWEEN SAN PASQUAL ST. AND ONEIDA ST.,
 AND PROPOSED WIDENING
 OF
SAN PASQUAL STREET
 FROM SANTA ANITA AVE. WESTERLY.
 SHOWING

The exterior boundary of the district to be assessed therefor under the provisions
 of the County Street Opening Act of 1923, Approved May 11, 1923.
 Scale - 1" = 100' ~ April, 1926.

J.E. ROCKHOLD, COUNTY SURVEYOR.

Submitted: *Alfred Jones* Chief Deputy Approved: *J.E. Rockhold* County Surveyor

Approved as to form
 EDWARD T. BISHOP, COUNTY COUNSEL,
 By *J. J. Moroney* Deputy.

LEGEND

District Boundary Line: — — — — —
 Land sought to be condemned colored red.

I hereby certify that the Board of Supervisors of Los Angeles County did, on the 3rd day
 of *May*, 1926, by resolution duly adopted, approve the accompanying map of the assess-
 ment district of County Street Opening District N^o 76 of the County of Los Angeles for
 the opening and extending of Seneca Street, the opening of Carmelo Avenue, the widening
 of Santa Anita Avenue, and the widening of San Pasqual Street.

Filed *May 30*, 1926, in the office of the
 County Surveyor of Los Angeles County.
 J.E. ROCKHOLD, COUNTY SURVEYOR
 By *Robert Heuer* Deputy

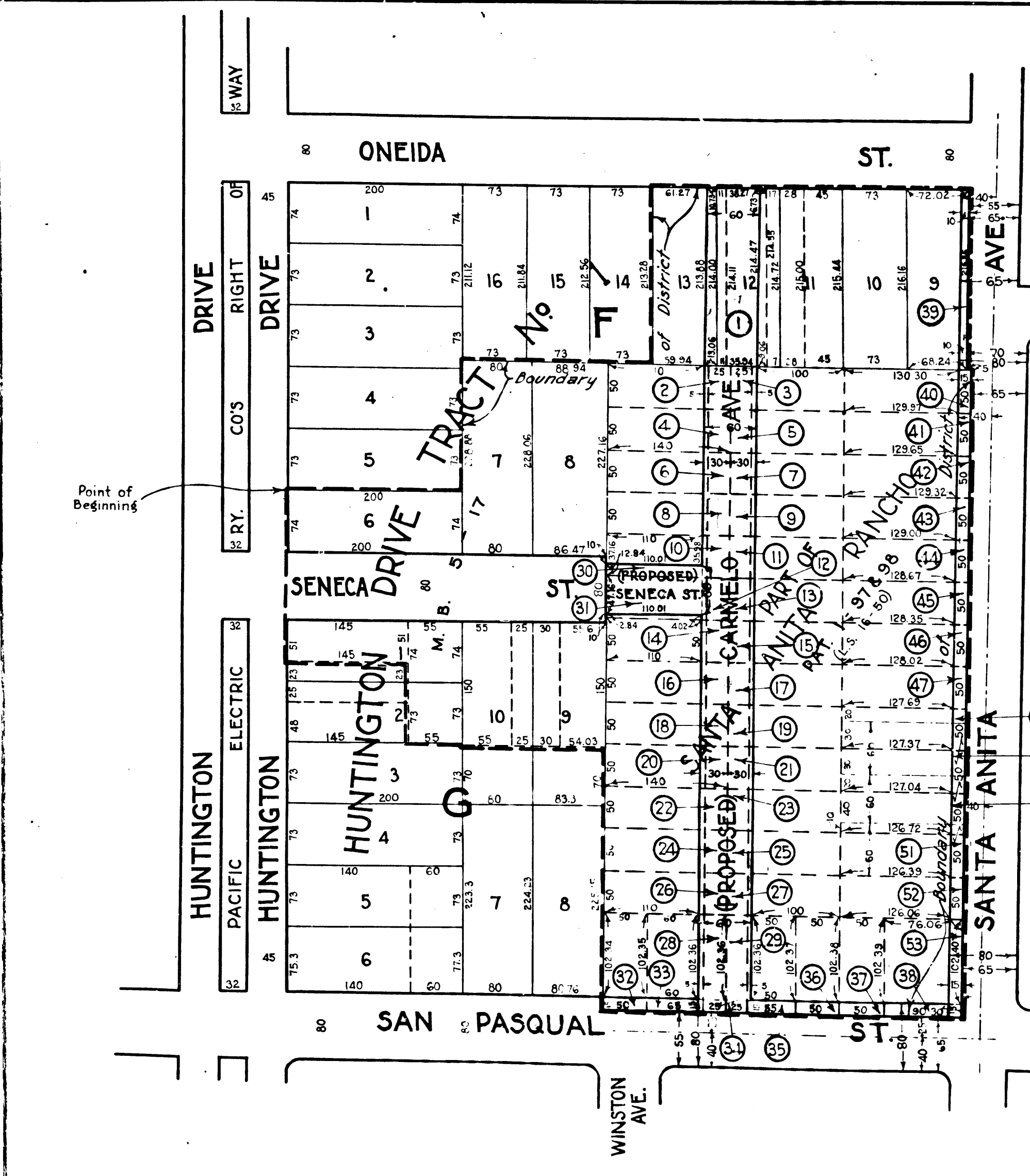
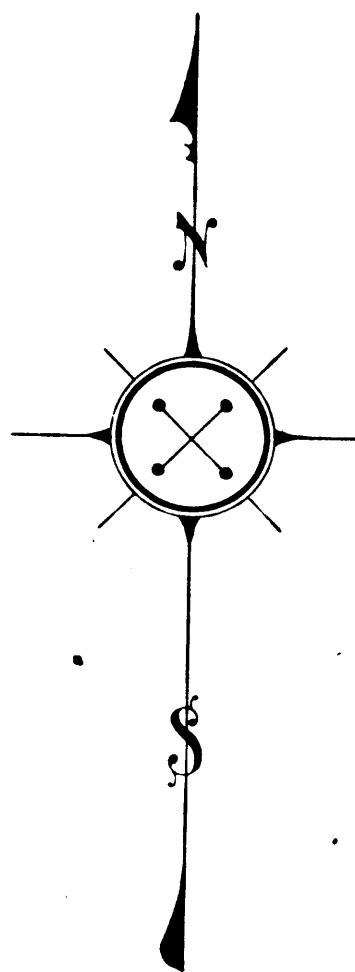
L. E. LAMPTON, County Clerk and Ex-
 Officio Clerk of the Board of Super-
 visors of said County of Los Angeles.
 By *Mama T. Beatty* Deputy

S.O.D. N^o 76

Drawn By: F.S. Dadds	Apr '26
Traced By: F.S. Dadds	Apr '26
Checked By: R.B. Heuer	Apr '26

EXHIBIT "A"

Numbers in circles indicate parcels sought
 to be condemned.
 The parcels are described in Paragraph VII
 of the complaint.
 Portion colored red shows location, general
 route and termini of Public Road to be
 condemned.



C.F. 1434-