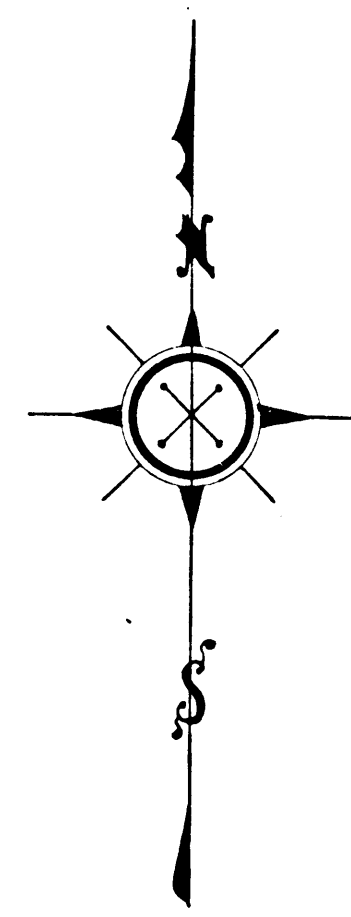
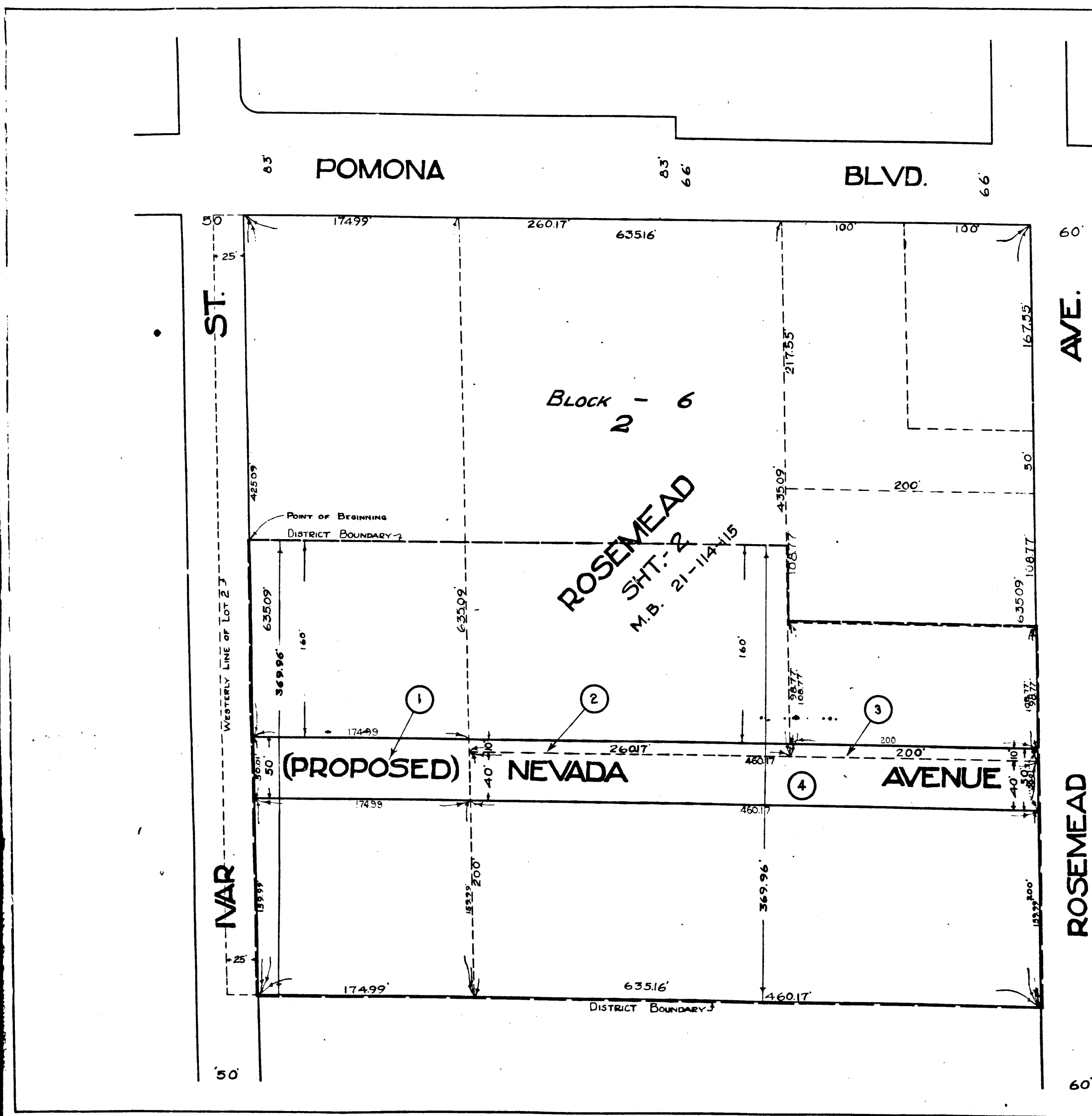


MEMPHIS ASSURANCE 957

MEMPHIS ASSURANCE 957



COUNTY
STREET OPENING DISTRICT N^o 84
MAP OF
PROPOSED OPENING
OF
NEVADA AVENUE
BETWEEN IVAR STREET AND ROSEMEAD AVENUE
SHOWING

The exterior boundary of the district to be assessed therefor under the provisions of the County Street Opening Act of 1923, Approved May 11, 1923.
Scale 1" = 60' Dec. 1926
J.E. ROCKHOLD, COUNTY SURVEYOR
Submitted: *Alfred Jones* Chief Deputy Approved: *J.E. Rockhold* County Surveyor

Approved as to form
EVERETT W. MATTOON, COUNTY COUNSEL
By: *J.E. Rockhold* Assistant County Counsel

- LEGEND -
District Boundary Line - - - - -
Land sought to be condemned colored red

I hereby certify that the Board of Supervisors of Los Angeles County did, on the 11th day of Jan. 1927, by resolution duly adopted, approve the accompanying map of the assessment district of County Street Opening District N^o 84 of the County of Los Angeles for the opening of the street shown on said map.

Filed Jan. 10th 1927, in the office of the County Surveyor of Los Angeles County
J.E. ROCKHOLD, COUNTY SURVEYOR
by *W. A. Deane* Deputy

L.E. LAMPTON, County Clerk and Ex-Officio Clerk of the Board of Supervisors of said County of Los Angeles.
by *W. A. Deane* Deputy

Superior Court Case No. 219239
Suit for Condemnation
Filed March 11th 1927
County of Los Angeles, Pltff.
Vs
A. Marie Baerthlein et al., Def.
Interlocutory decree rendered Nov. 28, 1927
Judg. Bk. 651-197
Final judgment in favor of Pltff. as per map rendered April 5, 1928

D: 64-297, O.R. 7888-120
SHT-44
A-33

EXHIBIT "A"

Numbers in circles indicate parcels sought to be condemned.
The parcels are described in Paragraph VII of the complaint.
Portion colored red shows location, general route and termini of Public Road to be condemned.

C.F. 1435-

S.O.D. N ^o 84	
Drawn by J.W. Evans	Dec. 26
Traced by J.W. Evans	Dec. 26
Checked by G.M. Plesser	Jan. '27