

COUNTY
STREET OPENING DISTRICT N° 83
MAP OF
PROPOSED OPENING, WIDENING & EXTENDING
OF
SHOEMAKER AVENUE
BETWEEN CENTER STREET & ARTESIA & BUENA PARK ROAD
SHOWING

The exterior boundary of the district to be assessed therefor under
the provisions of the County Street Opening Act of 1923.
Approved May 11, 1923.
Scale 1 in = 100 ft. Oct. 1926.

J. E. ROCKHOLD - COUNTY SURVEYOR.
Submitted: *Alfred J. Mason* Chief Deputy. Approved: *J. E. Rockhold* County Surveyor.

Approved as to form
EVERETT W. MATTOON, COUNTY COUNSEL
By: *Everett W. Mattoon* Assistant County Counsel.

LEGEND:
District Boundary Line ————
Land sought to be condemned colored red.

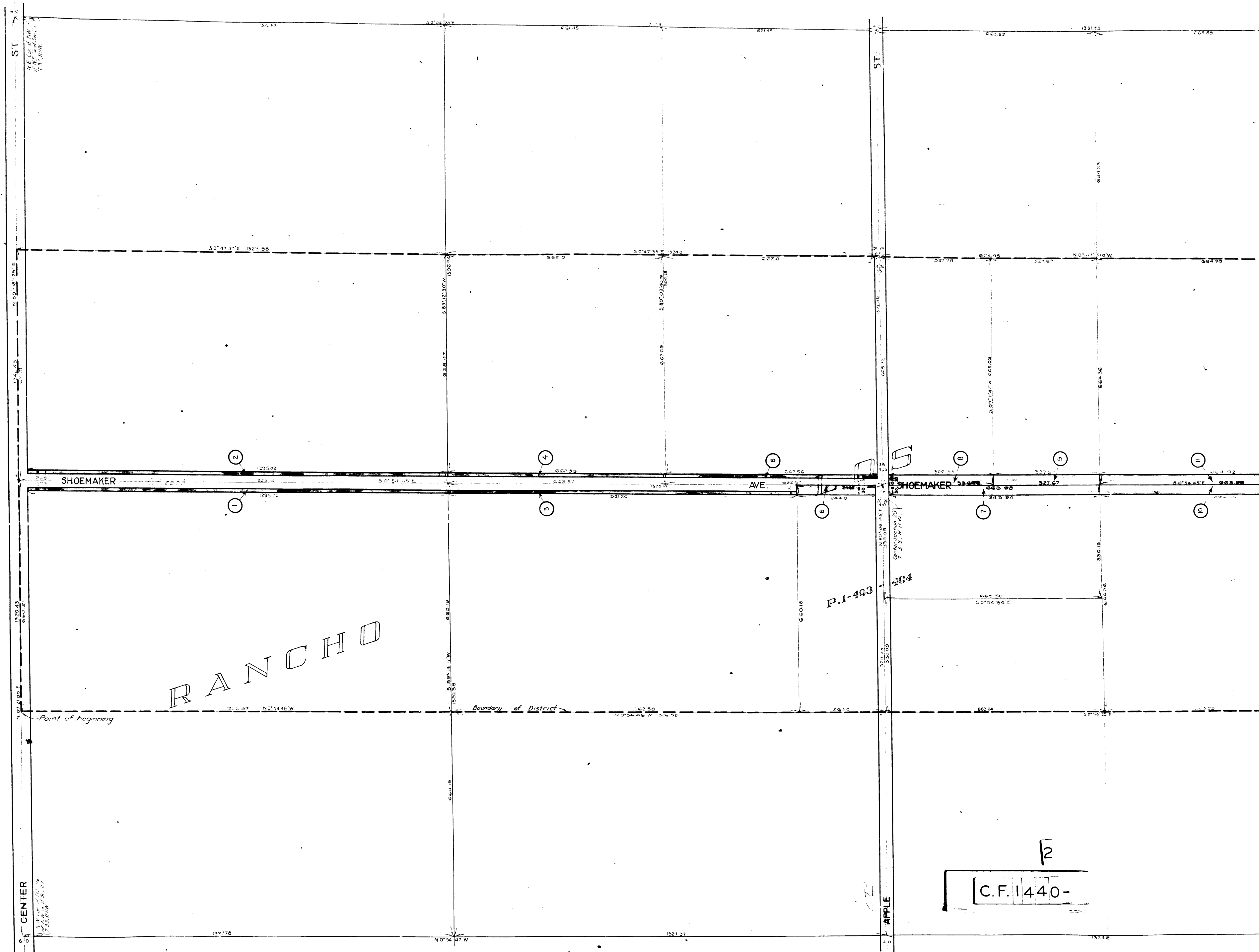
I hereby certify that the Board of Supervisors of Los Angeles County did,
on the 25th day of October, 1926, by resolution duly adopted, approve the
accompanying map of the assessment district of County Street Opening District N° 83 of
the County of Los Angeles for the opening of SHOEMAKER AVENUE.

Filed Oct. 23rd, 1926, in the office of the County Surveyor of Los Angeles County.
J. E. ROCKHOLD, COUNTY SURVEYOR
By: *W. E. Shuler* Deputy.
L. E. Lampton County Clerk and Ex-Officio Clerk of the Board of Supervisors of said Los Angeles County.
By: *J. D. Gray* Deputy.

Superior Court Case No. 23080
Suit for Condemnation
Filed Dec. 8, 1926
County of Los Angeles, Plaintiff
vs
Lee H. Brown et al. Defendant.
Interlocutory decree rendered June 28, 1927
Judg Bk 636264
Final judgment in favor of Plaintiff as per map.
Rendered April 25th 1928
D 68 185,0 R 7273 93
J. 11

C.F. 1440-

ST. DISTRICT
No. 1440
Map No. 1440
Filed Oct. 23, 1926



RANCHO

C.F. 1440-

12

P. 1-493

494

CENTER

APPLE

SHOEMAKER

AVE

SHOEMAKER

ST

ST

Point of beginning

Boundary of District