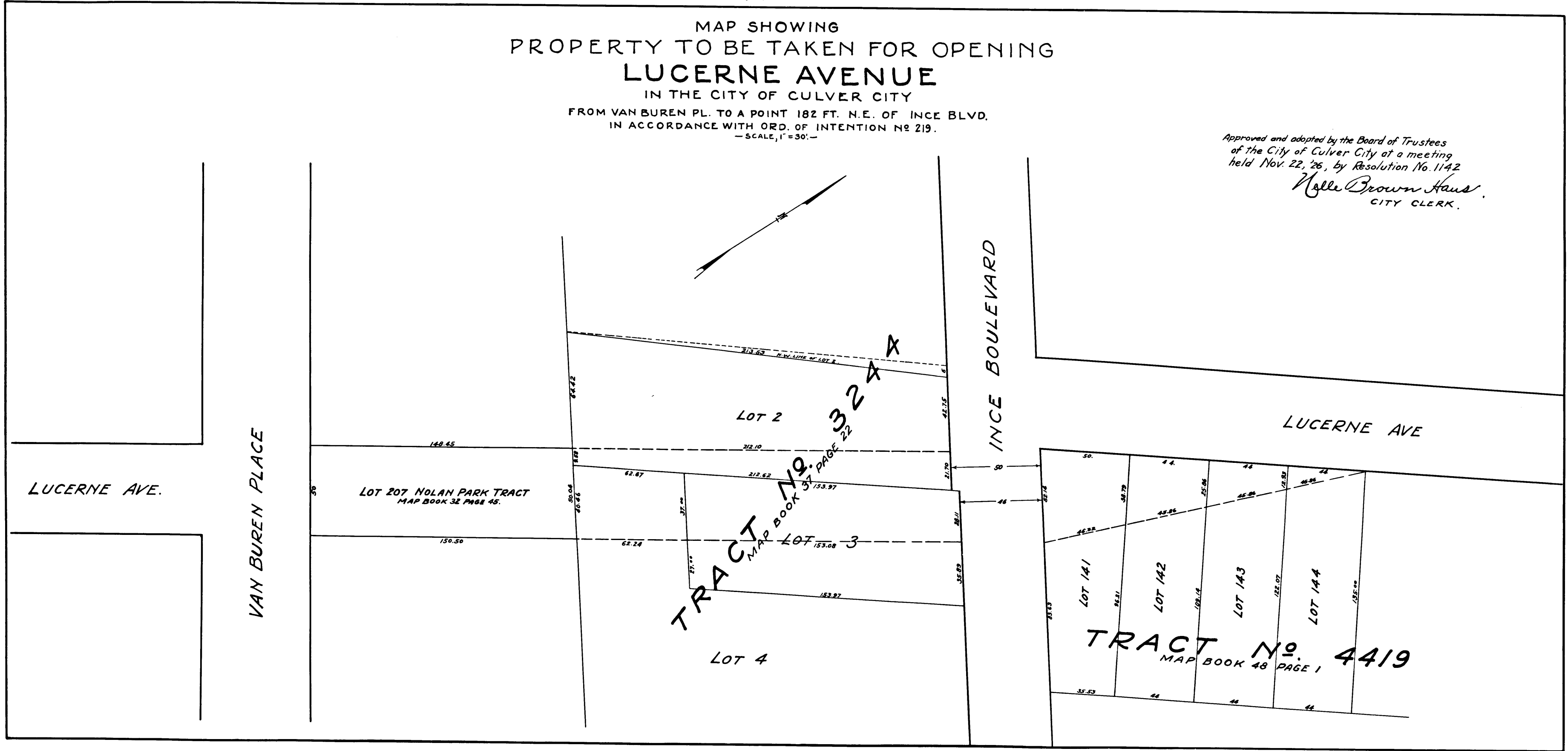


A-4

MAP SHOWING
PROPERTY TO BE TAKEN FOR OPENING
LUCERNE AVENUE
IN THE CITY OF CULVER CITY
FROM VAN BUREN PL. TO A POINT 182 FT. N.E. OF INCE BLVD.
IN ACCORDANCE WITH ORD. OF INTENTION NO. 219.
—SCALE, 1"=30'—

Approved and adopted by the Board of Trustees
of the City of Culver City at a meeting
held Nov. 22, '26, by Resolution No. 1142
Helle Brown Haus
CITY CLERK.

Sht 23
Sht 22
Superior Court Case No. 220327
Suit for Condemnation
Filed Mar. 28th 1927
City of Culver City, Plaintiff
Vs
H. D. Brown et al., Defendants
Interlocutory decree rendered Jan. 16, 1928
Judg. Bk. 675-355
Final judgment in favor of Plifff, as per map,
rendered, April 6th 1932.
D 21-227 O.R. 11521-201



C.F. 1443-