

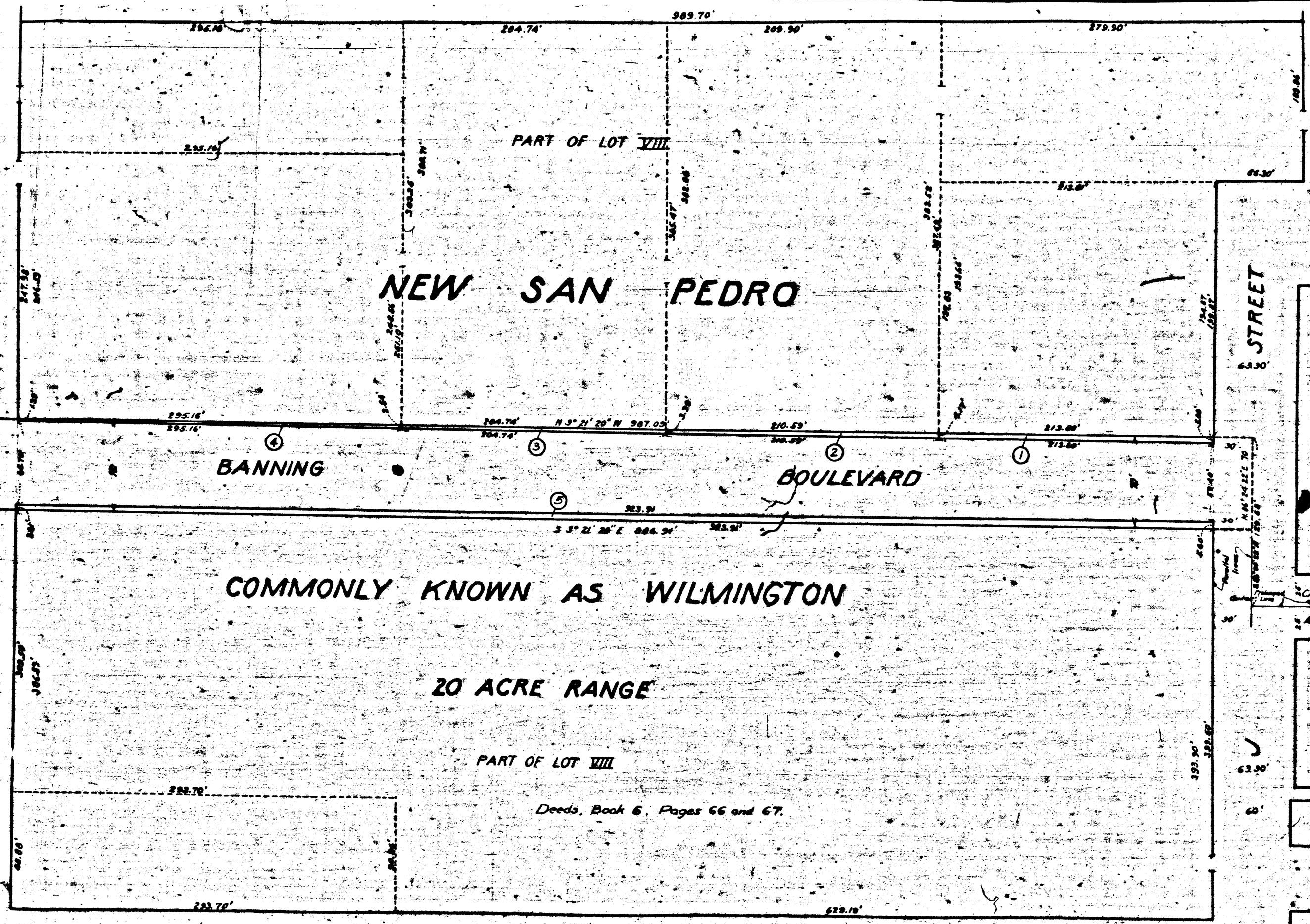
CA 14 A

CA 14 A

CA 14 A

CITY OF LOS ANGELES
OFFICE OF THE
ENGINEER

CA 14 A



MAP
SHOWING THE LAND TO BE CONDEMNED
FOR THE OPENING AND WIDENING OF
BANNING BOULEVARD
BETWEEN
J STREET
AND
ANAHEIM STREET

IN THE
CITY OF LOS ANGELES, CALIFORNIA
in accordance with Ordinances Nos. 54672 and 56202
John C. Shaw - City Engineer October 1926
SCALE: 1" = 50'

Superior Court Case No. 221102
Suit for Condemnation
Filed Apr. 7th 1927
City of Los Angeles, Plaintiff
vs
William C. Edwards et al., Def.
Interlocutory judgment rendered April 12th 1928 - Judg. 5A-687-2.
Final judgment in favor of Plaintiff as per map, rendered June 25, 1929.
D:75-78, O.R. 8164-359
Sheet 28

Notes: Land to be condemned shown colored red.
The figures in circles indicate the parcel numbers as set forth in Paragraph of the complaint.
Broken lines and figures show property holdings in those cases where they differ from recorded subdivisions.
Note: Figures in circles indicate parcel numbers as set forth in paragraph VI of the complaint.

