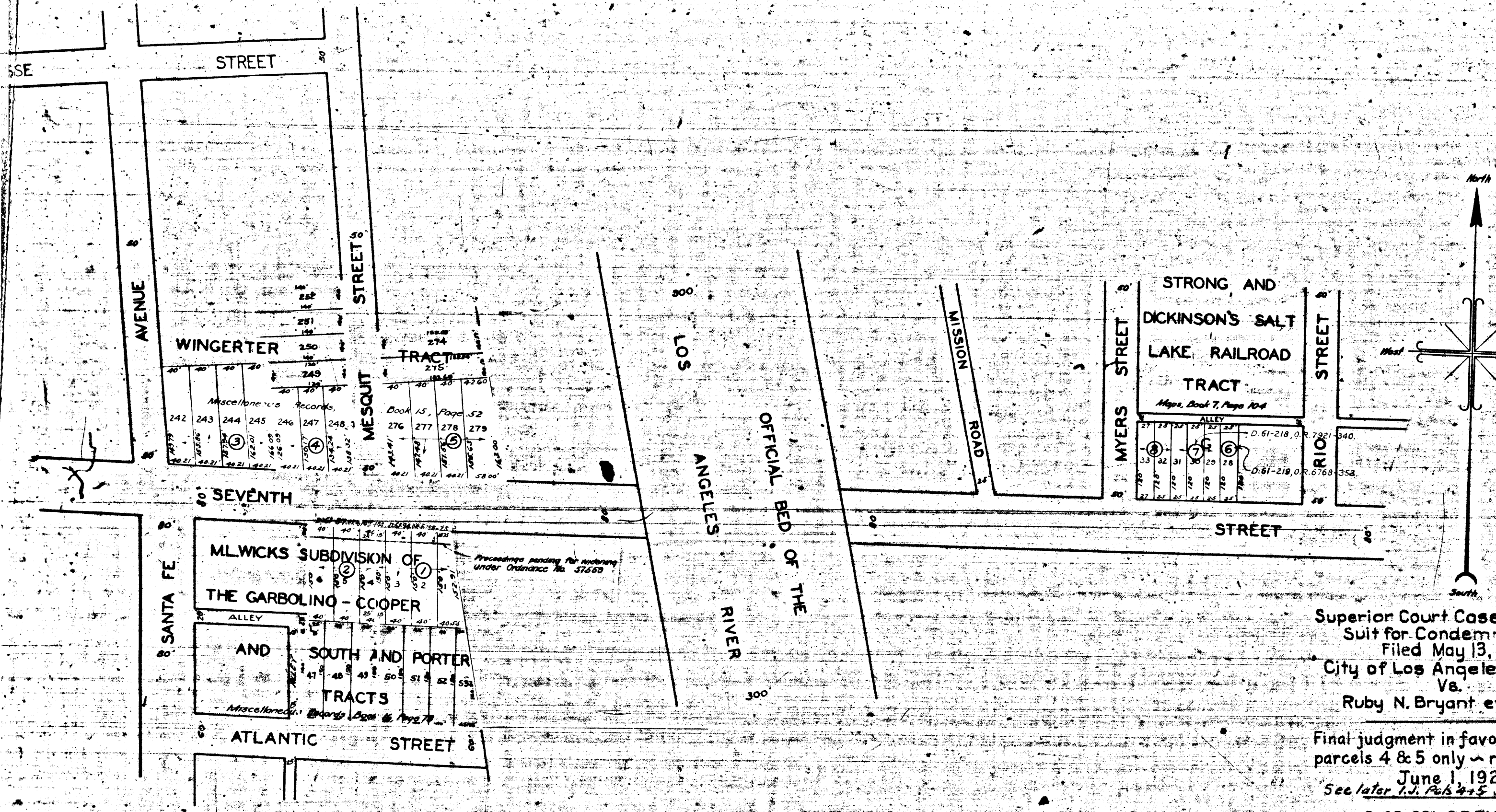


SEVENTH STREET VIADUCT
ORDER NUMBER 2443-5 FILE NUMBER 2565-26



MAP
SHOWING CERTAIN REAL PROPERTY CONTIGUOUS TO
SEVENTH STREET
BETWEEN
RIO STREET
AND
SANTA FE AVENUE

TO AND FROM WHICH RIGHTS OF INGRESS AND EGRESS
TO AND FROM THE SEVENTH STREET SIDE THEREOF
ARE TO BE CONDEMNED FOR
PUBLIC BRIDGE PURPOSES

IN THE
CITY OF LOS ANGELES, CALIF.
IN ACCORDANCE WITH ORDINANCE NO. 57685
JOHN C SHAW - CITY ENGINEER APRIL 1927
SCALE - 1" = 100'

Superior Court Case No. 223942
Suit for Condemnation
Filed May 13, 1927
City of Los Angeles, Pltff.
Vs.
Ruby N. Bryant et. al. Def.

Final judgment in favor of Plt'ff
parcels 4 & 5 only rendered
June 1, 1928.
See later L.J. Nos 4+5 J.B. 687-13
D: 65-221, O.R. 7192-48.
Dismissed by Court, Parcel 4 (7-21-27)
2 (7-29-27) 5 (9-2-27) 7 (9-29-27) 3
(11-29-27) 8 (12-12-27) (Case completed)

Notes: Real property to which rights of ingress and egress
are to be condemned shown colored red.
Figures in circles indicate parcel numbers as set
forth in paragraph VII of the complaint.
Extent boundary of entire parcel, of which numbered
parcel colored in red is apart, shown outlined in black.
Note: - Do not cut in on Wall Sheet or Ass-
essor Book - P.L.J.
Immediate Possession taken of all Parcels May 17-27



222A-A

A-4222