

YORK BLVD & AVE41 IMPROVEMENT DISTRICT  
FILE NO 1174-25 ORDER NO 28956

MAP  
SHOWING THE LAND TO BE CONDEMNED  
FOR  
PUBLIC STREET PURPOSES  
AT  
AVENUE FORTY-TWO  
BETWEEN  
YORK BOULEVARD  
AND A POINT  
TWO HUNDRED FIFTY (250) FEET  
SOUTHERLY THEREFROM

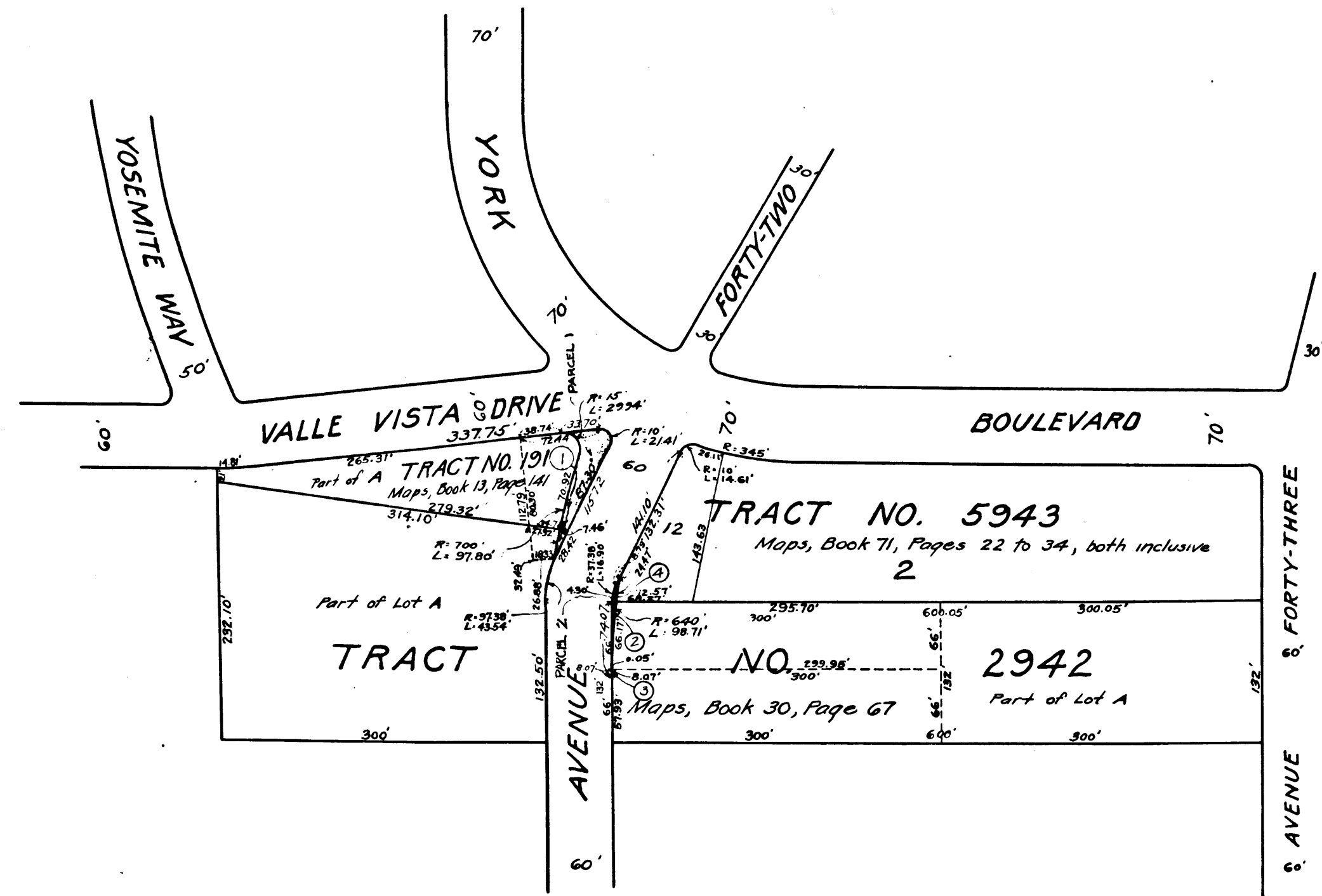
IN THE  
CITY OF LOS ANGELES, CALIF.  
IN AC. ORDANCE WITH ORDINANCE No. 57596  
JOHN C SHAW, CITY ENGINEER. APRIL, 1927  
Scale 1" = 100'

Note: Land to be condemned shown colored red.  
Dotted lines and dimensions show property holdings in those cases where they differ from recorded subdivisions.  
Figures in circles indicate parcel numbers as set forth in paragraph VIII of the complaint.

Superior Court Case No. 228049  
Suit for Condemnation  
Filed July 6<sup>th</sup> 1927  
City of Los Angeles, Plaintiff  
Vs  
Henry Klund et al., Defendants.

Final judgment in favor of Pl'tff. as  
per map, rendered May 24, 1928.

D:65-212, O.R.7136-184.



Sht. 41  
A 586  
A 576

C.F. 1470 -

A-4520

OS2A-A

OS2A-A

OS2A-A

A-4250