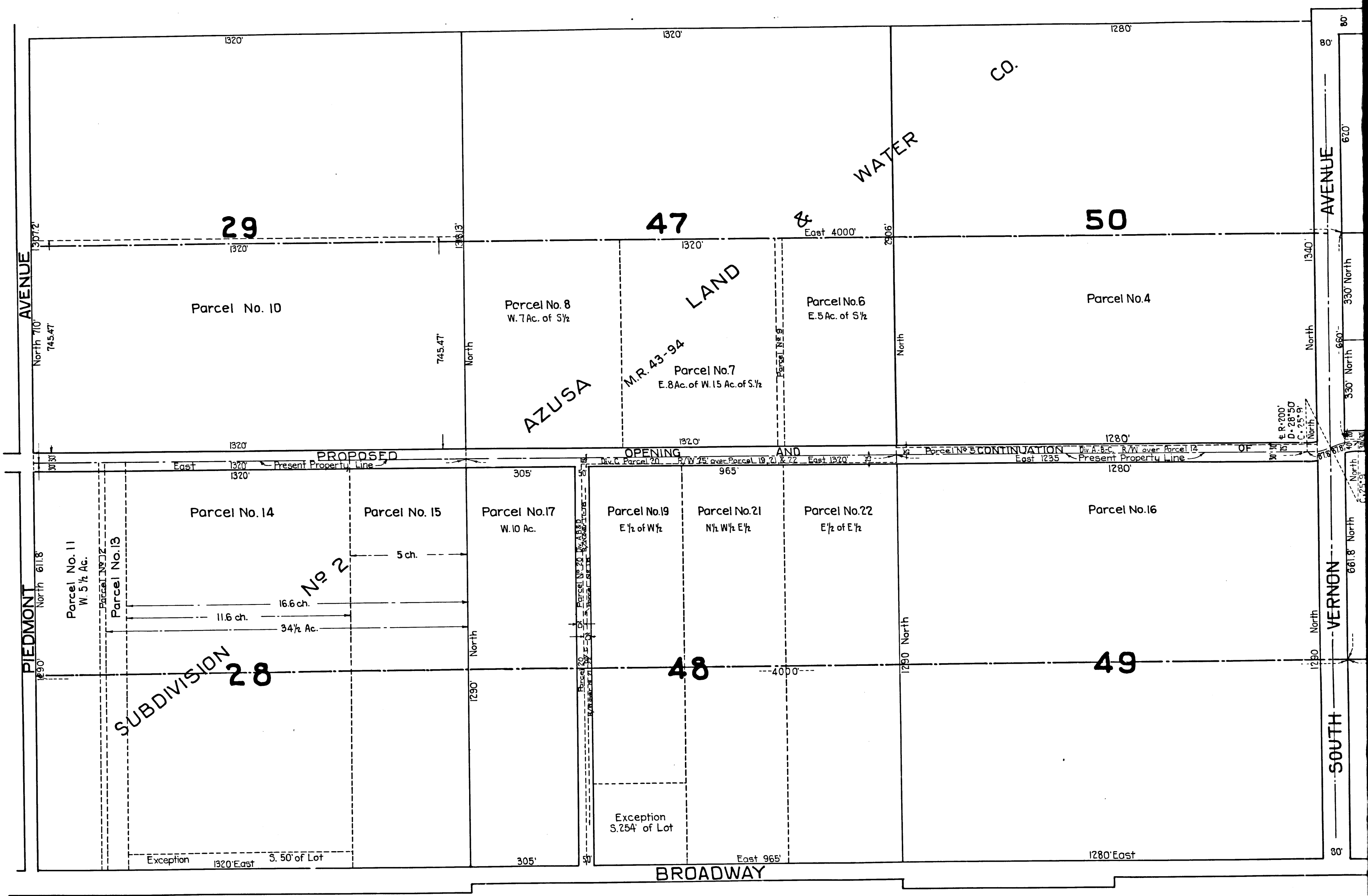
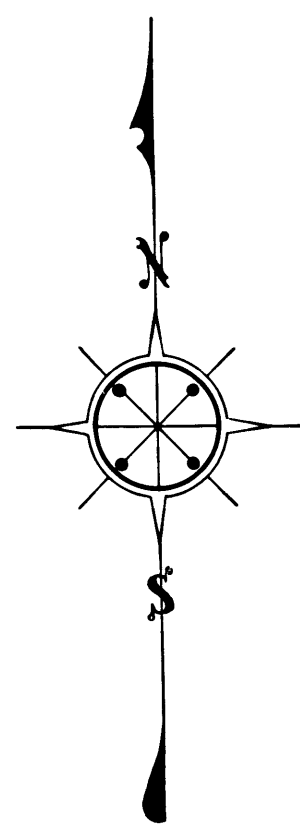


PLAN No 1037
MAP OF THE ASSESSMENT DISTRICT
 FOR
THE OPENING OF PARAMOUNT AVENUE
FROM ITS EASTERLY TERMINATION IN PIEDMONT AVENUE TO
AZUSA AVENUE, SHOWING THE LANDS TO BE TAKEN OR DAMAGED,
IN THE CITY OF AZUSA
 APPROVED BY THE BOARD OF TRUSTEES JAN. 18, 1926
 BY RESOLUTION 874
CL Nichols City Engineer *J. P. Smith* City Clerk
 CITY OF AZUSA, CALIFORNIA.
 Note: Land to be condemned colored Red. Boundaries of Assessment District shown in Yellow.
 Scale: 1" = 200'

Sht. 47
 Superior Court Case No. 227932
 Suit for Condemnation
 Filed July 2nd 1927
 City of Azusa, Plaintiff
 Vs
 Frank L. Dingman et al, Def.
 Case dismissed by order of the
 Court on Sept. 19, 1935.

EXHIBIT "C."

C.F. 1471 -



2

C.F. 1471 -