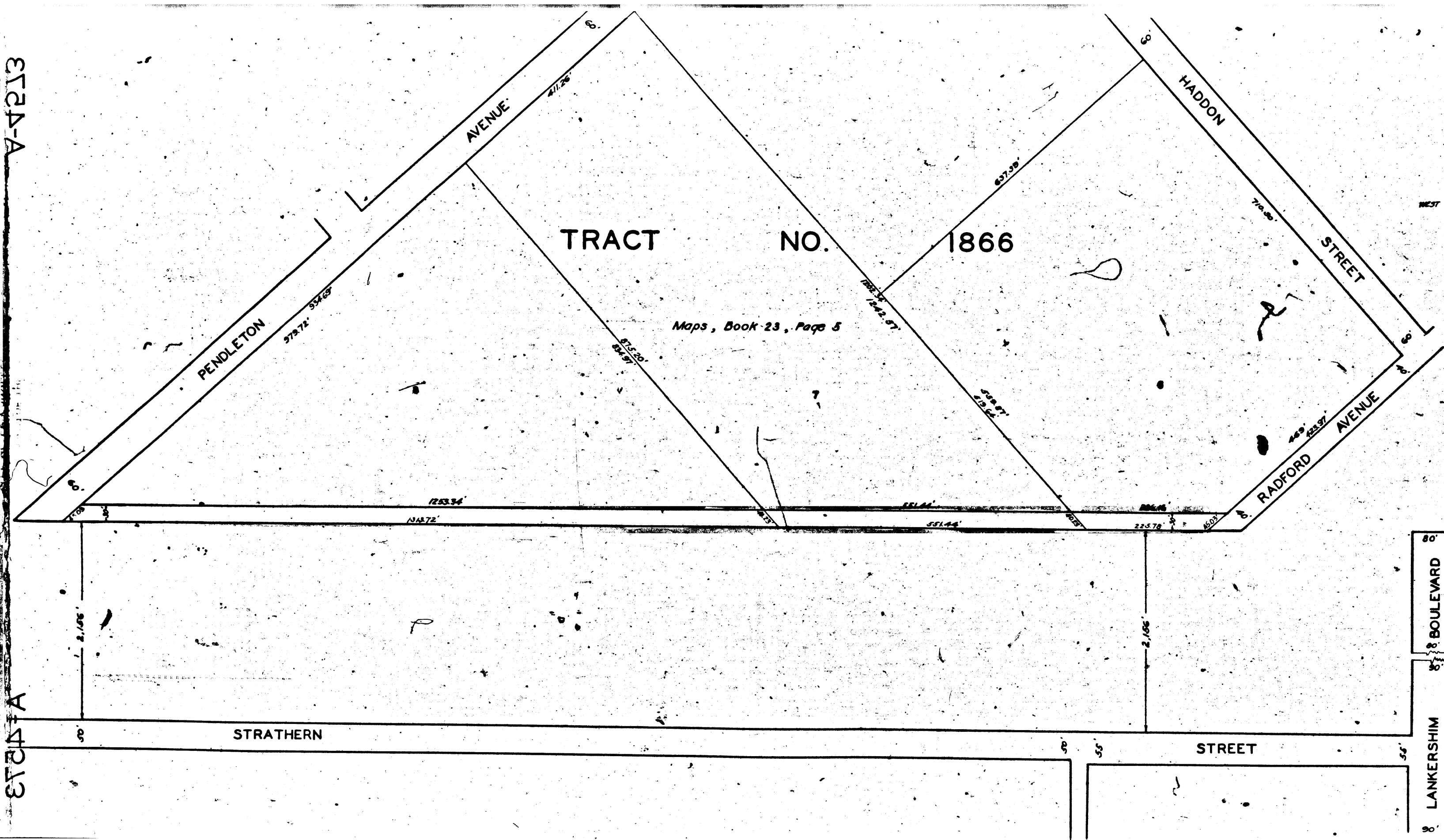


ST2A-A

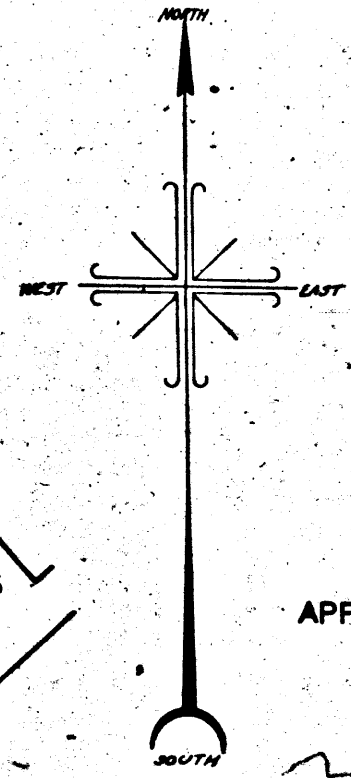
ST2A-A

ST2A-A

ST2A-A



ROSCOE ST. AND PEORIA ST. IMPROVEMENT DIST. CT  
 FILE NO. 999-27  
 ORDER NO. 47259



MAP  
 SHOWING THE LAND TO BE CONDEMNED  
 FOR  
 PUBLIC STREET PURPOSES  
 SITUATED  
 APPROXIMATELY TWO THOUSAND ONE HUNDRED FIFTY-SIX  
 (2,156) FEET NORTHERLY OF  
**STRATHERN STREET**  
 AND EXTENDING FROM  
**RADFORD AVENUE**  
 TO  
**PENDLETON AVENUE**  
 IN THE CITY OF LOS ANGELES, CALIF.  
 IN ACCORDANCE WITH ORDINANCE NO. 57501  
 JOHN C. SHAW CITY ENGINEER Scale 1"=100' MAY 1927

Note: Land to be condemned shown colored red.  
 Superior Court Case No. 228834  
 Suit for Condemnation  
 Filed July 15<sup>th</sup> 1927  
 City of Los Angeles, Plaintiff  
 vs  
 D.E. London et al. Defendants.  
 Case No. 17715