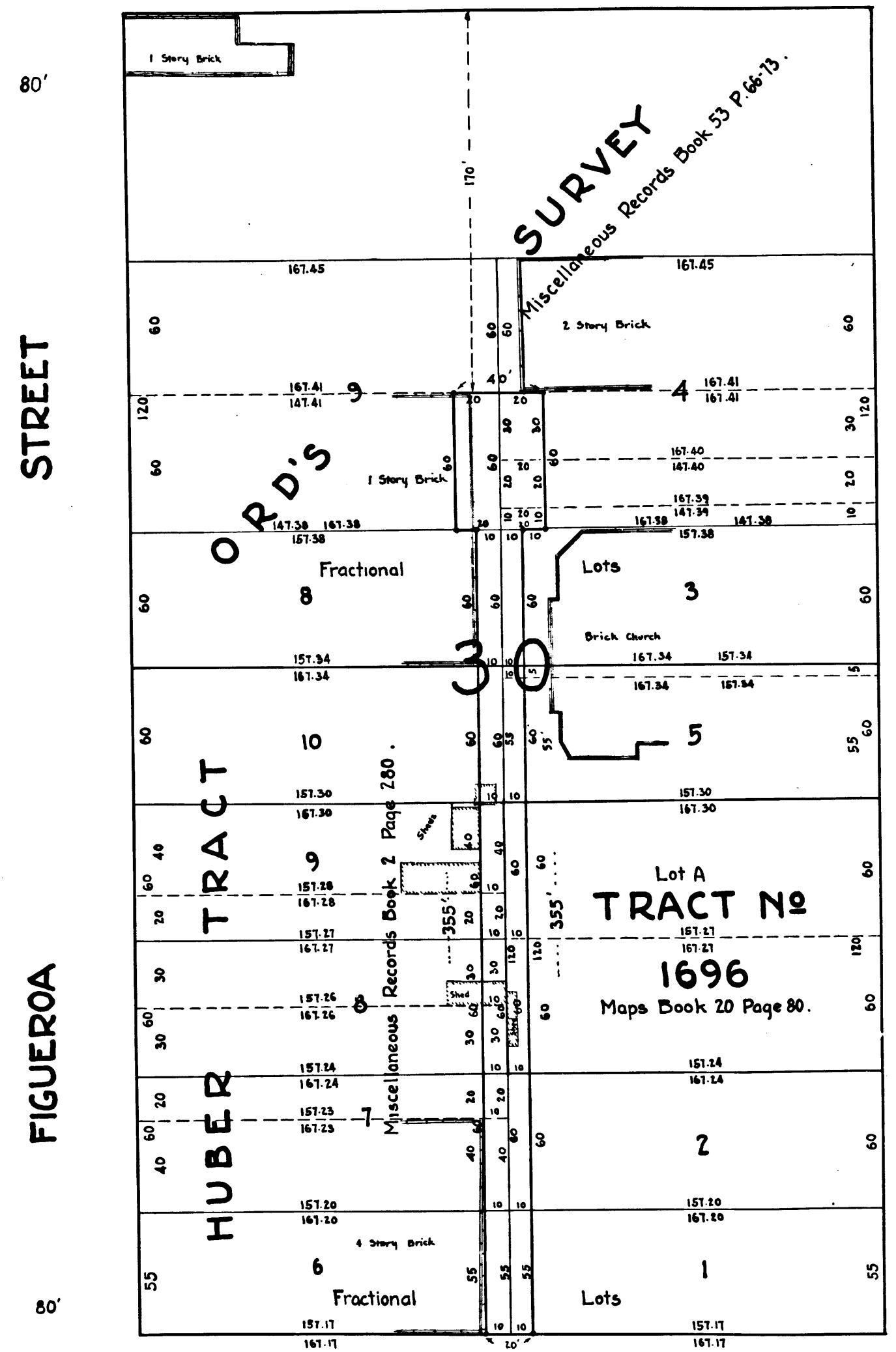


80' SEVENTH STREET 80'



STREET

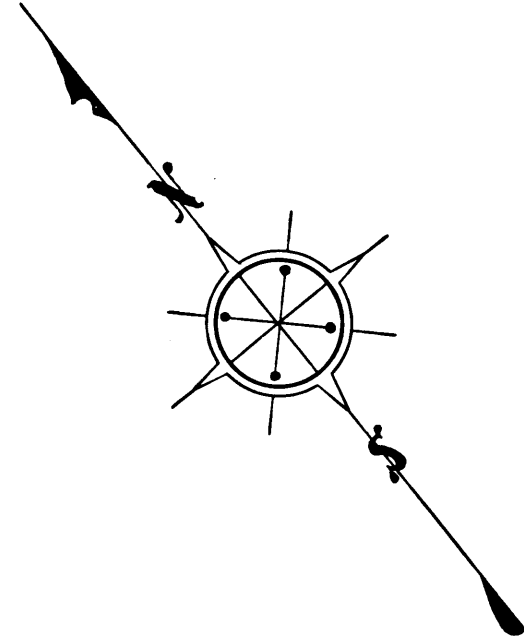
FIGUEROA

70' EIGHTH STREET 70'

MAP
 SHOWING THE LAND TO BE CONDEMNED
 FOR THE OPENING OF AN
ALLEY
 IN THE BLOCK
 NORTHWESTERLY OF FLOWER STREET
 FROM
 A LINE 170 FEET SOUTHWESTERLY FROM
 THE SOUTHWESTERLY LINE OF SEVENTH STREET
 TO
 THE NORTHEASTERLY LINE OF EIGHTH STREET
 IN THE
 CITY OF LOS ANGELES, CAL.

IN ACCORDANCE WITH ORDINANCES NOS. 50709 & 51597 (NEW SERIES)
 H. A. VAN NORMAN - CITY ENGINEER MARCH - 1925

Note :- Land to be condemned shown colored red. Broken lines and figures show property holdings in cases where they differ from recorded subdivisions.



*Superior Court Case No. 168962
 Suit for Condemnation
 Filed May 1st 1925
 City of Los Angeles, Plaintiff
 Vs
 Frank Ryan et al., Defendants
 Final judgment in favor of
 Plaintiff as per map, rendered
 July 13th 1927
 D: 61-39 O.R. 6730-178*

A-24
 SH 3

C.F. 1478-