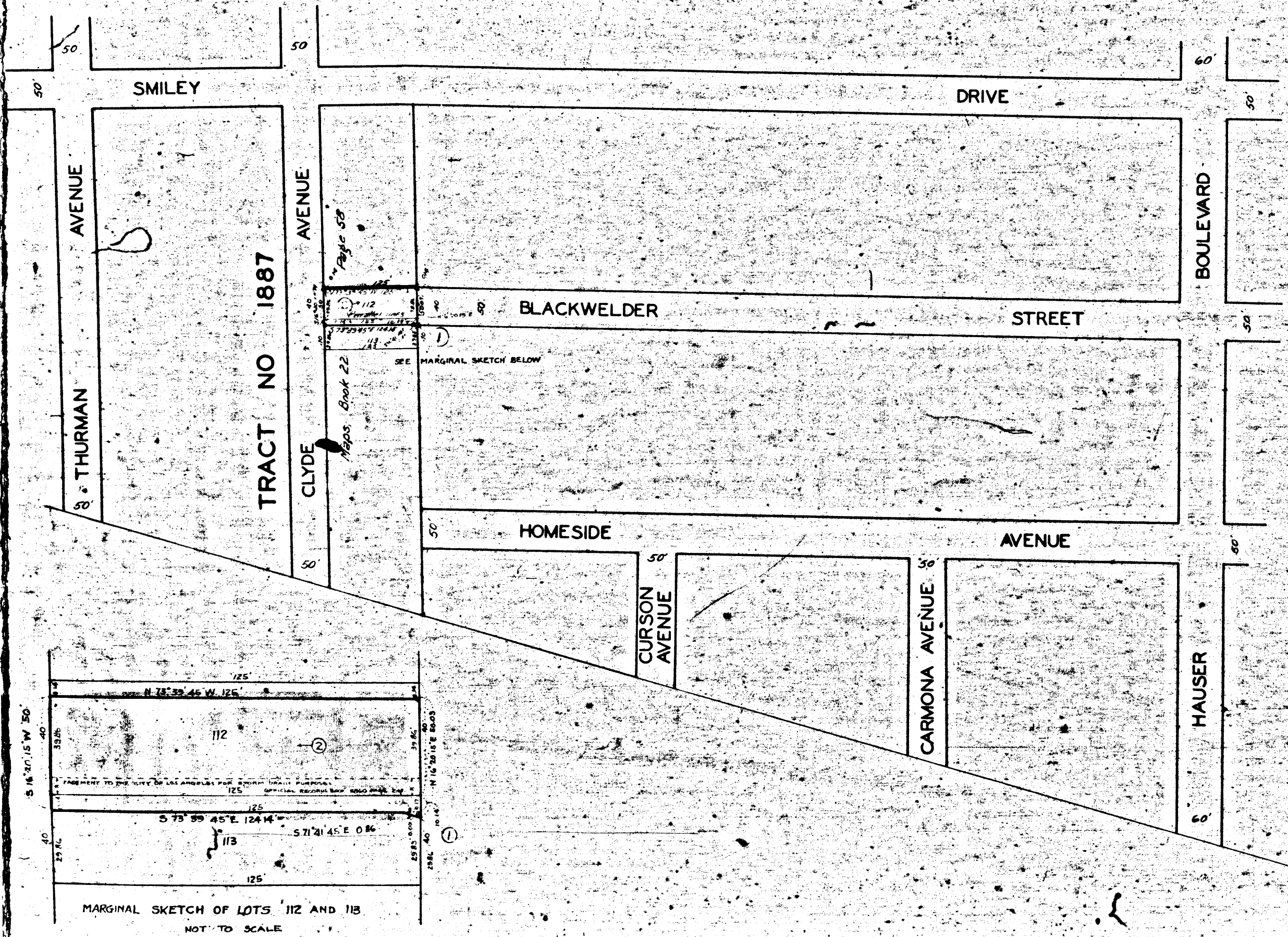


44223

44223



MAP
SHOWING THE LAND TO BE CONDEMNED
FOR THE
OPENING AND EXTENDING
OF
BLACKWELDER STREET
BETWEEN
HAUSER BOULEVARD
AND
CLYDE AVENUE
IN THE CITY OF LOS ANGELES, CALIF.
IN ACCORDANCE WITH ORDINANCES NOS. 56041 AND 57648
JOHN C. SHAW CITY ENGINEER MAY 1927.
SCALE 1 INCH 100 FEET

NOTE: LAND TO BE CONDEMNED SHOWN COLORED RED.
BROKEN LINES AND DIMENSIONS SHOW PROPERTY
HOLDINGS IN THOSE CASES WHERE THEY DIFFER FROM
RECORDED SUBDIVISIONS.
FIGURES IN CIRCLES INDICATE PARCEL NUMBERS AS SET
FORTH IN PARAGRAPH VII OF THE COMPLAINT.

Superior Court Case No. 230169
Suit for Condemnation
Filed July 27th 1927
City of Los Angeles, Plaintiff
vs
Security Trust & Savings Bank
et al., Def.
Final judgment in favor of Plt'ff. as
per map, rendered December 12, 1928.
D:70-135, O.R.7379-138
Sht. 22

