

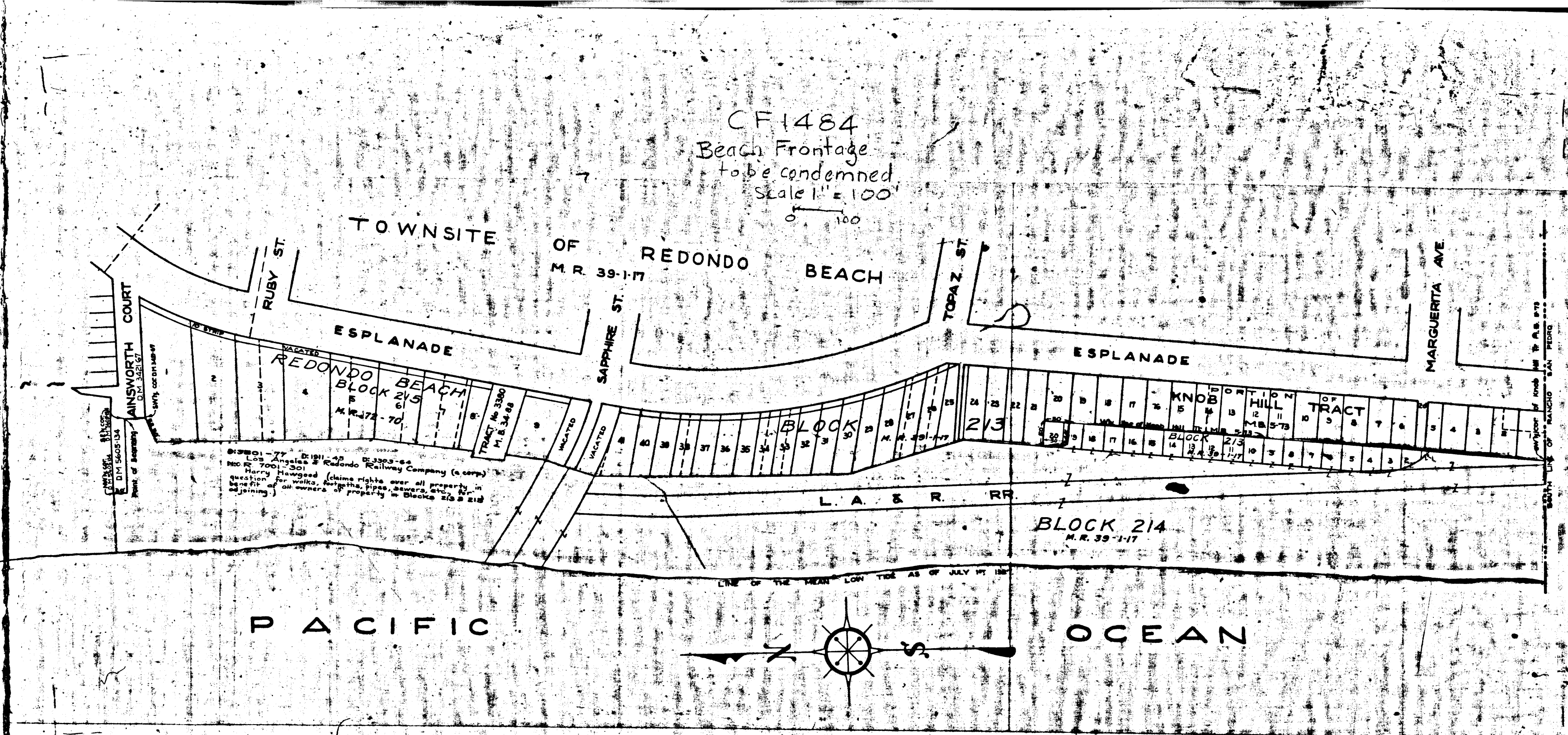
CF 1484
 Beach Frontage
 to be condemned
 Scale 1" = 100'

**BEACH FRONTAGE
 TO BE CONDEMNED AT
 REDONDO BEACH**
 SCALE 1"=100'

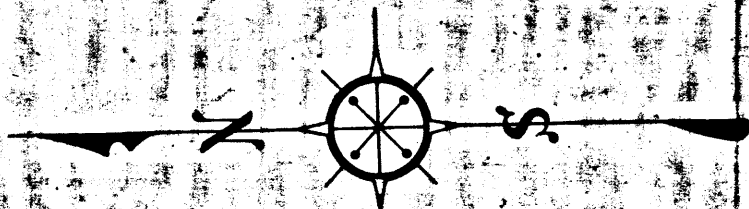
LEGEND
 LAND TO BE CONDEMNED
 OUTLINED IN RED

Sht. 25
 Superior Court Case No. 230386
 Suit for Condemnation
 Filed July 29th 1927
 County of Los Angeles, Pliffs:
 Vs
 L.A. and Redondo Ry. Co. et al.
 Pending Mar. 12th 1929
 Case dismissed April 14th 1931.

1487



PACIFIC OCEAN



Title Search 6-27-27
 W.H. - J.S.D.
 Well Sht 25