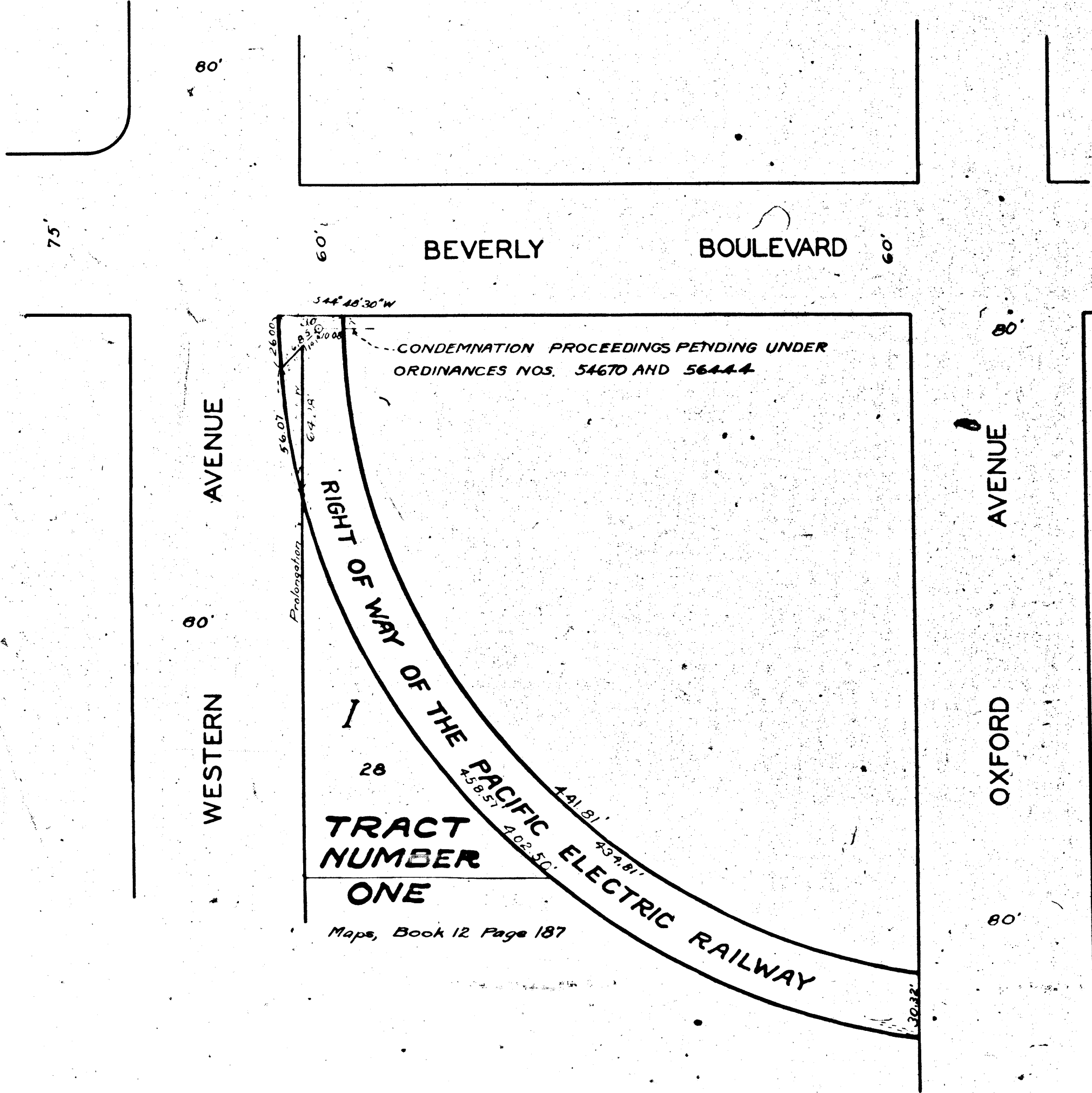


7000-A

PROPERTY OF THE CITY OF LOS ANGELES

10007-A

Distance from Beverly 1/4 pt. or less
Loc. No. 63120 File No. 56007



MAP
 SHOWING THE LAND
 TO BE CONDEMNED
 FOR THE WIDENING OF
WESTERN AVENUE
 ALONG THE EASTERLY LINE THEREOF
 BETWEEN
BEVERLY BOULEVARD
 AND A POINT EIGHTY-FIVE (85)
 FEET SOUTHERLY THEREFROM
 IN THE CITY OF LOS ANGELES, CALIF.
 IN ACCORDANCE WITH ORDINANCE NO. 58154
 JOHN C. SHAW CITY ENGINEER JULY 1927

SCALE 1 INCH = 50 FEET

NOTES

LAND TO BE CONDEMNED SHOWN COLORED RED

*Superior Court Case No. 230477
 Suit for Condemnation
 Filed Aug. 1st 1927
 City of Los Angeles, Plaintiff
 Vs
 Dalton Investment Co. et al., Def.
 Interlocutory decree rendered Jan.
 10th 1928 - Judg. Bk. 649-393
 Final judgment in favor of Pltff. as
 per map, rendered May 2nd, 1928.*

D: 15-186, O.R. 2603-14

SH 5

A-4667