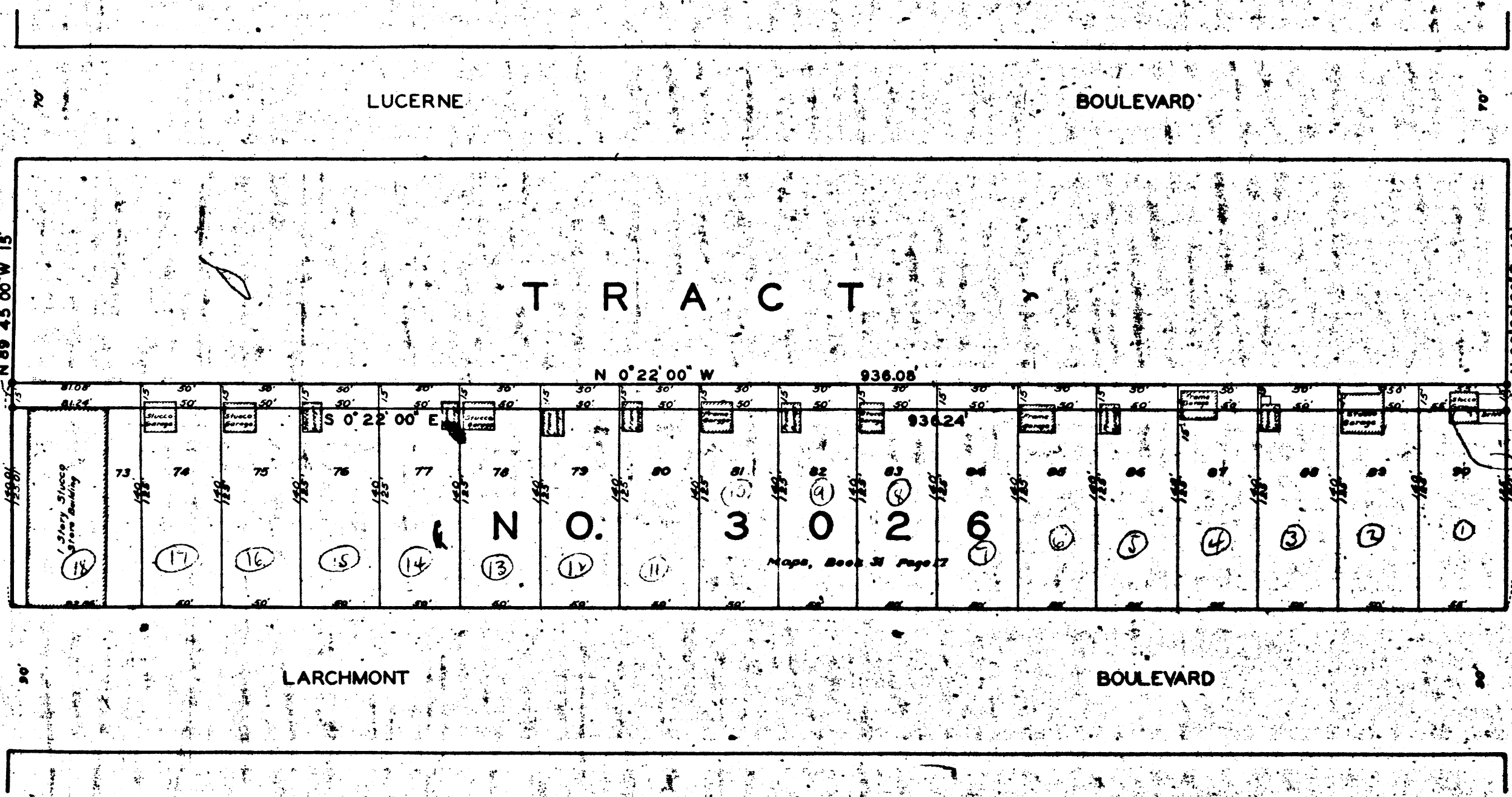
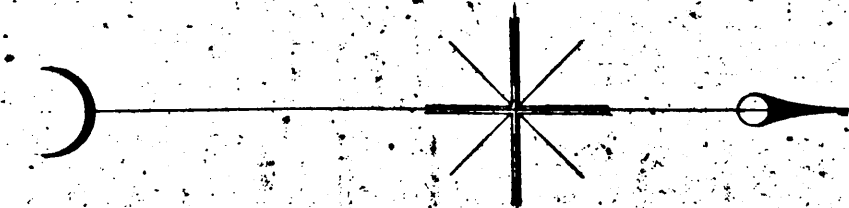


VNEEO

SCC4-A

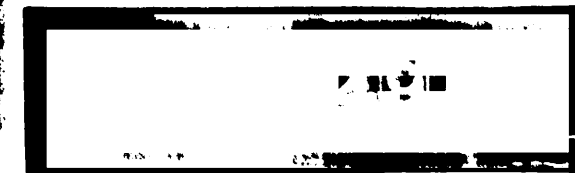
5224-A

5225-A



MAP
 SHOWING THE LAND
 TO BE CONDEMNED
 FOR THE OPENING
 OF
 AN ALLEY
 FROM
 ROSEWOOD AVENUE TO BEVERLY BOULEVARD
 BETWEEN
 LARCHMONT BOULEVARD AND LUCERNE BOULEVARD
 IN THE CITY OF LOS ANGELES, CALIFORNIA
 IN ACCORDANCE WITH ORDINANCES NOS. 56116 AND 57740
 JOHN C. SHAW CITY ENGINEER MAY 1927
 SCALE 1 INCH = 50 FEET

NOTES
 LAND TO BE CONDEMNED SHOWN COLORED RED.
 FIGURES IN CIRCLES INDICATE THE PARCEL NUMBERS
 AS SET FORTH IN PARAGRAPH OF THE COMPLAINT.
 Superior Court Case No. 232385
 Suit for Condemnation
 Filed Aug. 26th 1927
 City of Los Angeles, Plaintiff
 vs
 Louis Rich et al., Defendants.
 Final judgment in favor of Plaintiff, as
 per map, rendered December 24, 1928.
 D:70-169, O.R. 7291-260.
 Sht. 5



RECORDS SECTION
 CITY OF LOS ANGELES
 OFFICE OF THE
 CLERK OF THE
 SUPERIOR COURT