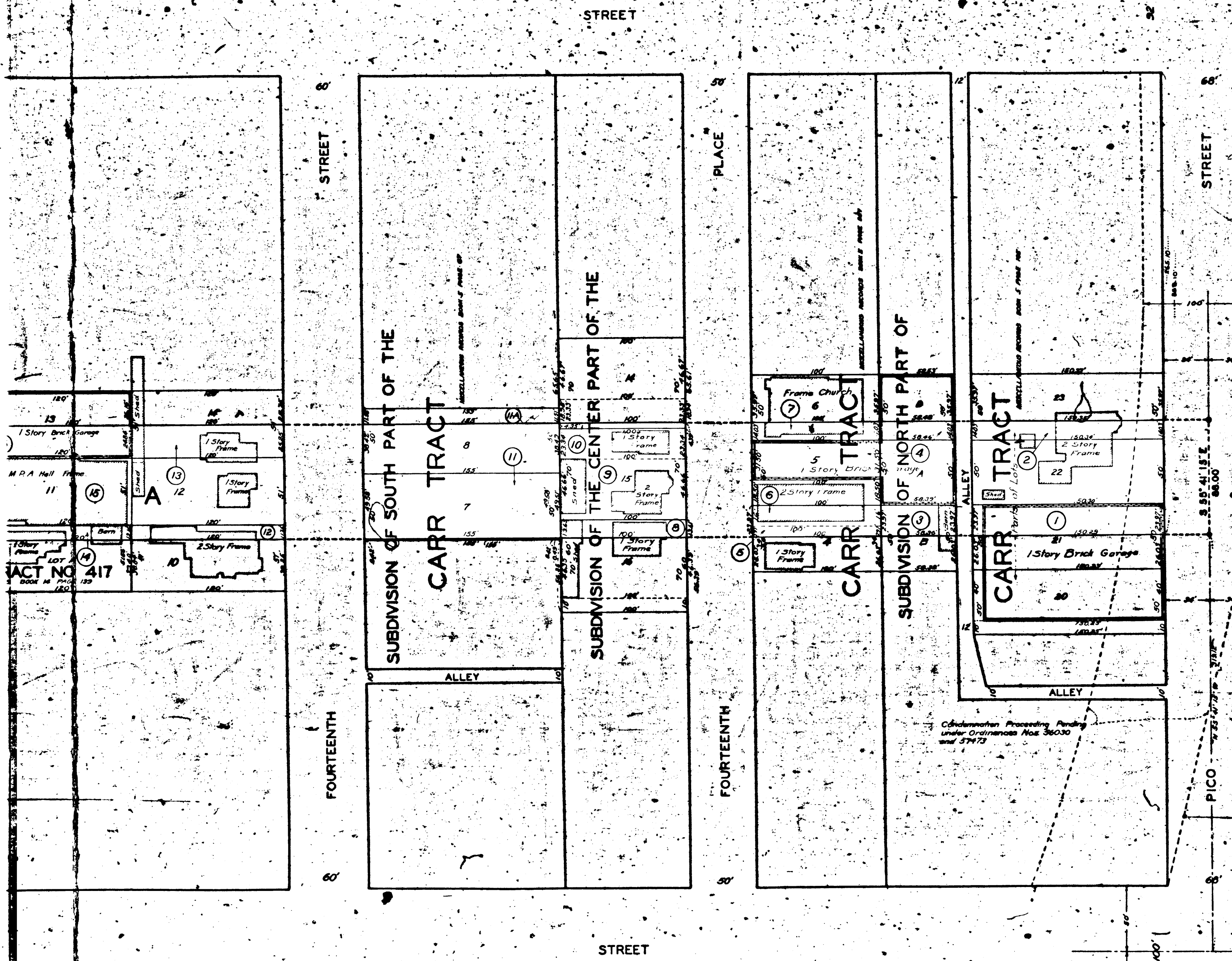


511-3
 511-6
 A-26
 A-250
 A-33
 A-48



MAP
 CONSISTING OF 4 SHEETS
 SHOWING THE LAND TO BE CONDEMNED
 FOR THE
 LAYING OUT AND EXTENDING OF
BROADWAY
 IN A GENERAL SOUTHWESTERLY DIRECTION
 FROM PICO STREET
 TO THIRTY-EIGHTH STREET
 ALSO THE
 LAYING OUT AND WIDENING OF
BROADWAY
 FROM THIRTY-EIGHTH STREET
 TO SANTA BARBARA AVENUE
 ALSO THE
 LAYING OUT AND OPENING OF A NEW STREET
 FROM SANTA BARBARA AVENUE
 TO THE FIRST ANGLE POINT IN
 MONETA AVENUE NORTHERLY OF
 FORTY-FIRST STREET ALONG THE
 NORTHERLY PROLONGATION OF
 THAT PORTION OF BROADWAY
 EXTENDING SOUTHERLY FROM
 FORTY-FIRST STREET
 ALSO THE
 LAYING OUT AND OPENING OF A NEW STREET
 IN A STRAIGHT LINE
 FROM THE SOUTHEASTERLY LINE OF
 BROADWAY AT THIRTY-FIFTH STREET
 AS SAID BROADWAY IS SO PROPOSED TO
 BE LAID OUT OPENED AND EXTENDED TO
 THE NORTHWESTERLY LINE OF MAIN
 STREET SOUTHWESTERLY OF AND AD-
 JACENT TO THIRTY-SIXTH STREET.
 IN THE CITY OF LOS ANGELES CALIFORNIA
 IN ACCORDANCE WITH ORDINANCES NOS. 56840 AND 5776L
 JOHN C. SHAW CITY ENGINEER JUNE 1927

Sht. 3
 Superior Court Case No. 232033
 Suit for Condemnation
 Filed Aug. 22nd 1927.
 City of Los Angeles, Plaintiff
 vs.
 David H. McCartney et al, Def.
 Interlocutory judgment as per
 map, rendered Jan. 4th 1929.
 Judg. Bk. 705-48.
 Final judgment in favor of Pltff as
 per map, rendered June 26, 1930.
 D:79-219, O.R. 10160-71.

SCALE
 NOTES
 LAND TO BE CONDEMNED SHOWN COLORED RED.
 DOTTED LINES AND DIMENSIONS SHOW PROPERTY HOLDINGS IN
 THOSE CASES WHERE THEY DIFFER FROM RECORDED SUBDIVISIONS
 FIGURES IN CIRCLES INDICATE THE PARCEL NUMBERS AS
 SET FORTH IN PARAGRAPH IX OF THE COMPLAINT.

HILL

60' STREET

TRACT

125' 125' 125' 125'

2 1/2 Story Frame 5

2 Story Frame 185' 6

1 Story Frame 7

125' 125' 125' 125'

33 32 31

ALLEY

120' 120' 120' 120'

2 1/2 Story Brick 7

1 Story Frame 8

28 29 30

8' STREET

SEVENTEENTH

MORRIS VINEYARD SUBDIVISION

125' 125' 125' 125'

1 Story Brick Garage 14

1 Story Brick Garage 15

1 Story Brick Garage 13

1 Story Frame 12

2 1/2 Story Frame 10

125' 125' 125' 125'

27 26 25 23 22

N 33° 50' 30" E

S 33° 50' 30" W

8' BOULEVARD

VENICE

MORRIS VINEYARD SUBDIVISION

120' 120' 120' 120'

1 Story Brick Garage 13

1 Story Brick Garage 11

1 Story Frame 19

1 1/2 Story Frame 18

1 Story Frame 17

2476.55

2449.54

120' 120' 120' 120'

20 21 19 18 17

8' STREET

FIFTEENTH

TRACT NO 417

MAPS BOOK 14 PAGE 133

120' 120' 120' 120'

1 Story Brick Garage 13

M.P.A. Hall Frame 11

1 Story Frame 15

1 Story Frame 14

1 Story Frame 12

2 1/2 Story Frame 10

120' 120' 120' 120'

15 13 12 11 10

8' STREET

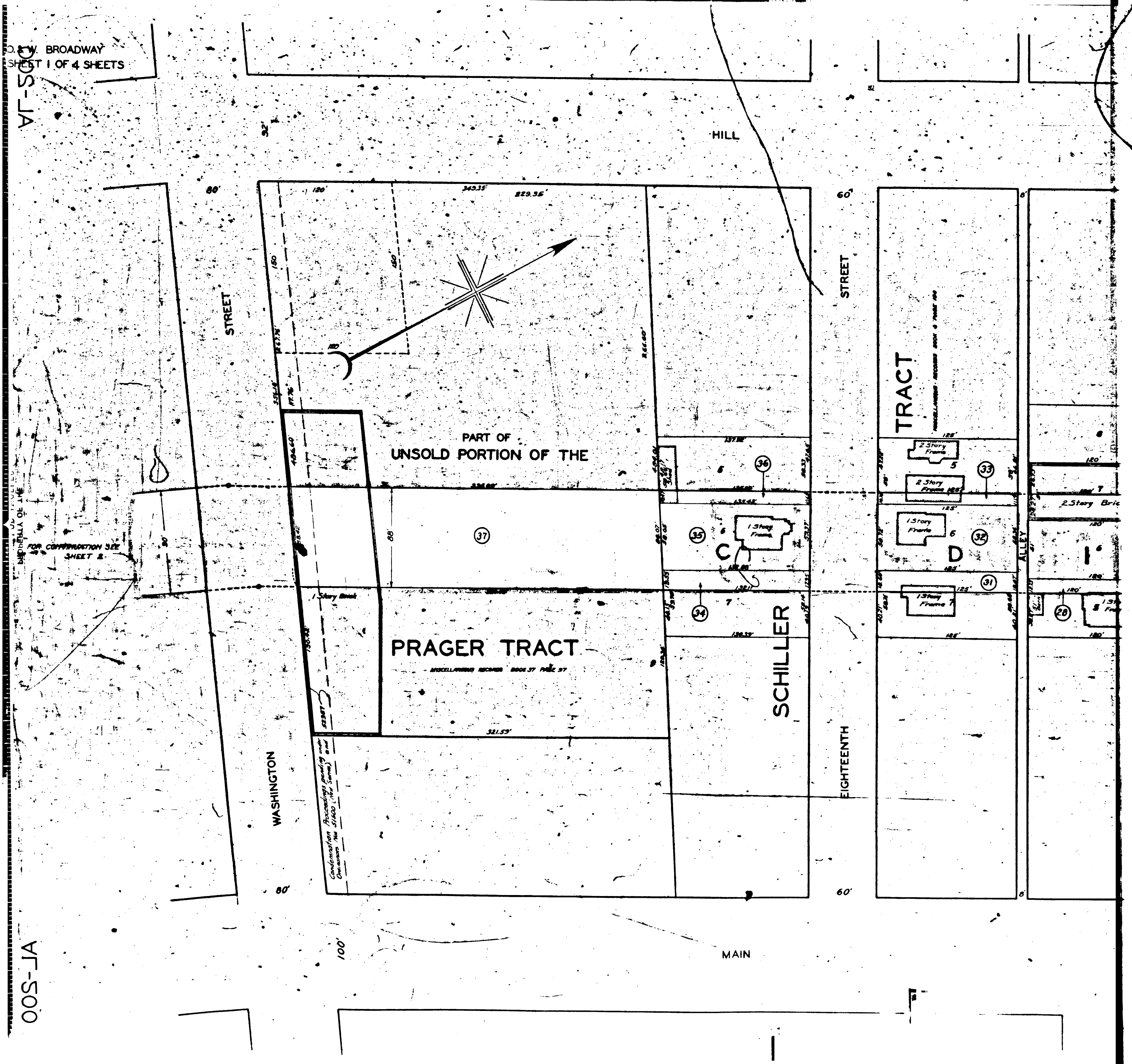
FOURTEENTH

SUBDIVISION OF SOUTH PART OF THE

SCHILLER

EIGHTEENTH

MAIN



FOR COMPARISON SEE SHEET 2

Condensation Proceedings pending and Ongoing (for \$1600 (for same))

MISCELLANEOUS RECORDS BOOK 37 PAGE 57

MISCELLANEOUS RECORDS BOOK 37 PAGE 58