

TRACT NO. 1870  
MAPS BOOK 21 PAGE 17

J.W. LONG'S  
SUBDIVISION  
OF A PART OF LOT 3 BLOCK 3  
HANCOCK'S SURVEY

PACIFIC RAILROAD COMPANY

See Sub. Ord. 66366  
Ord. 66426

JEFFERSON STREET

BRONSON ALLEY

THIRTY-THIRD STREET

TRACT  
MISCELLANEOUS RECORDS BOOK 63 PAGE 40

BUSH'S AND CRAWFORD'S  
SUBDIVISIONS  
OF A PART OF

J.S. CRAWFORD

THIRTY-SECOND STREET

LOT 6  
HANCOCK'S SURVEY

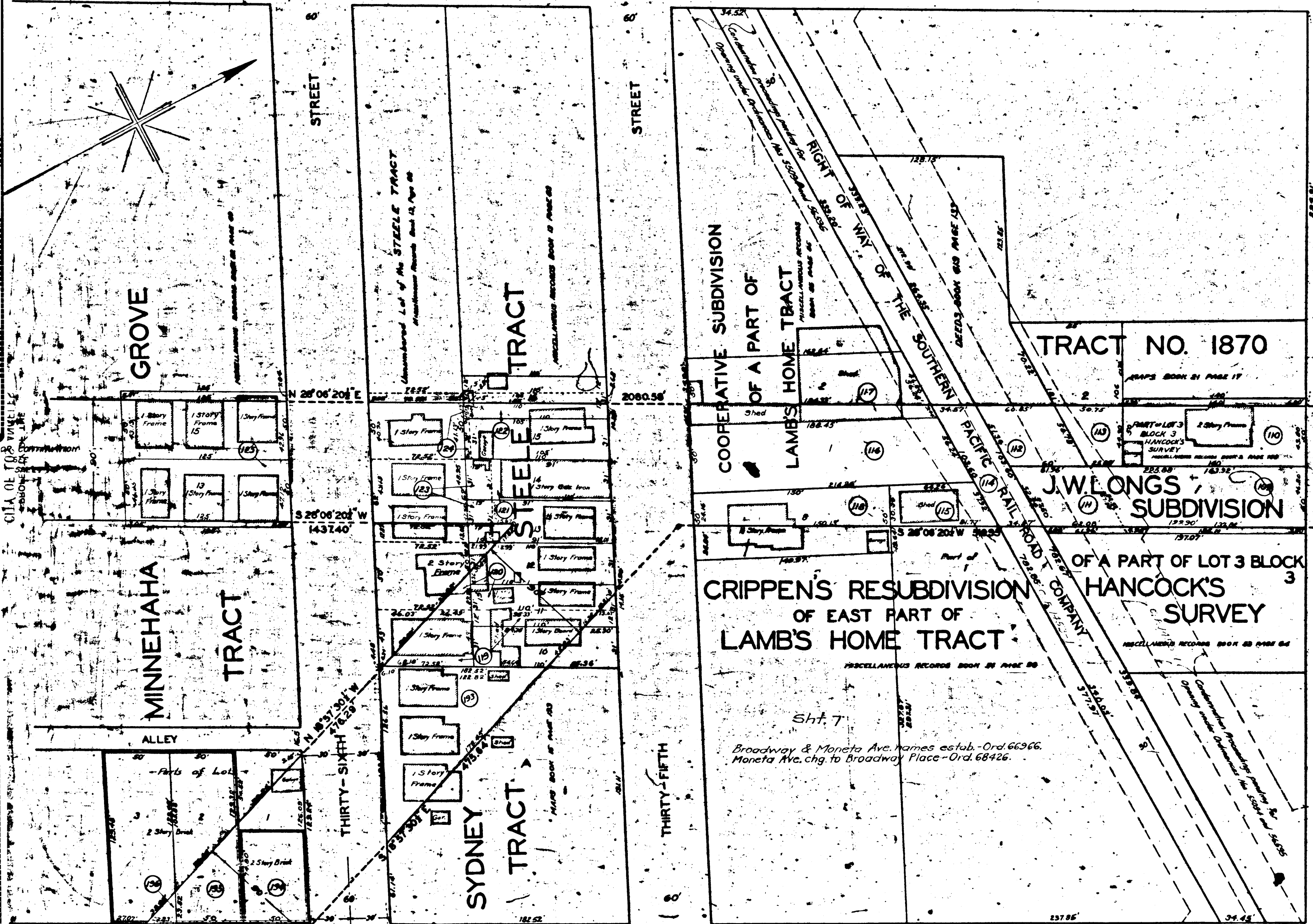
ALCANTARA

THIRTY-FIRST STREET

TRACT

AF-S00

OOS-JA



STREET

JEFFERSON

CRIPPEN'S RESUBDIVISION  
OF EAST PART OF  
LAMB'S HOME TRACT

TRACT NO. 1870

J.W. LONG'S  
SUBDIVISION

OF A PART OF LOT 3 BLOCK 3  
HANCOCK'S  
SURVEY

Sht. 7  
Broadway & Moneta Ave. names estab. Ord. 66366.  
Moneta Ave. chg. to Broadway Place - Ord. 68426.