

0124-A

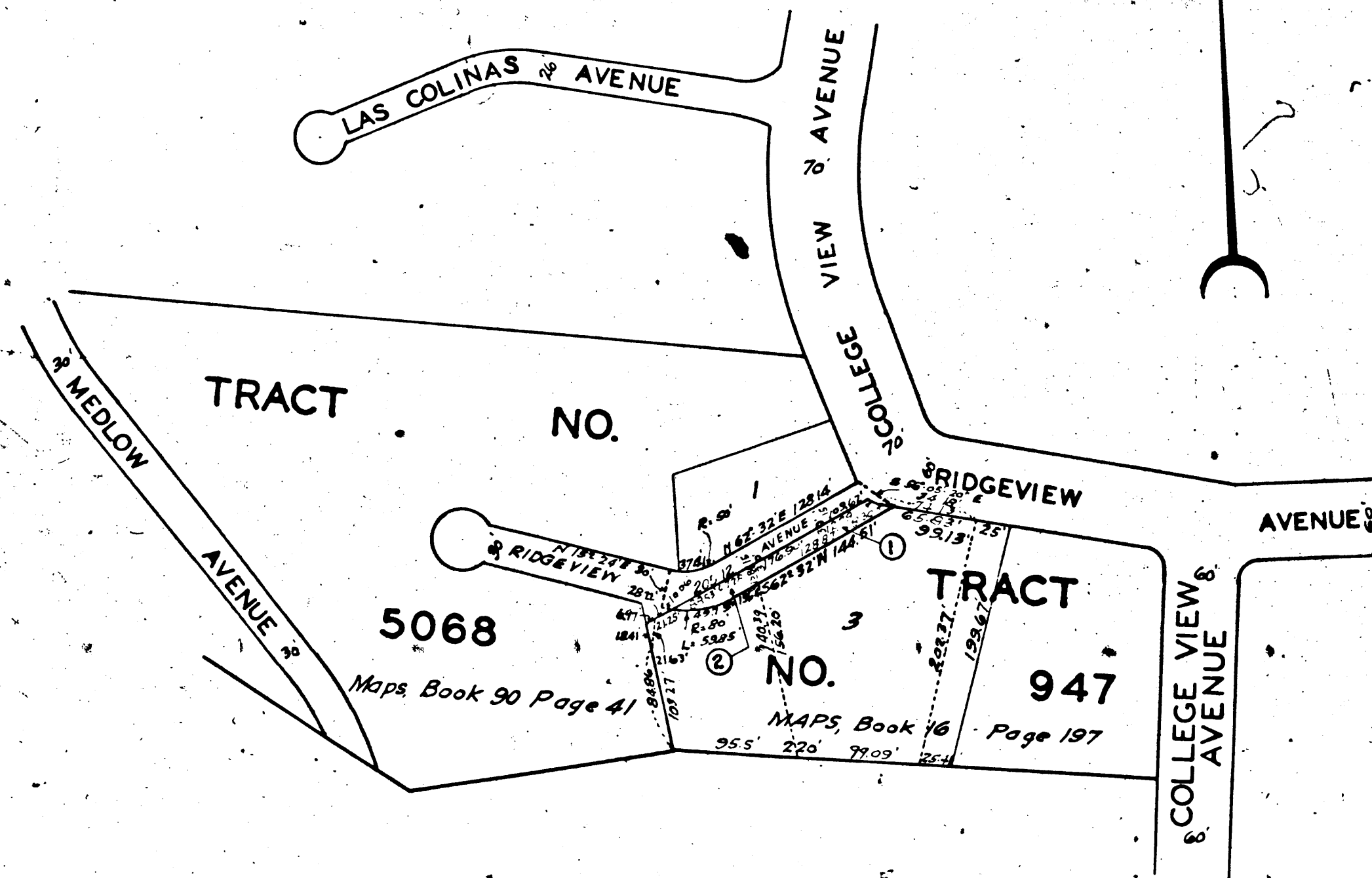
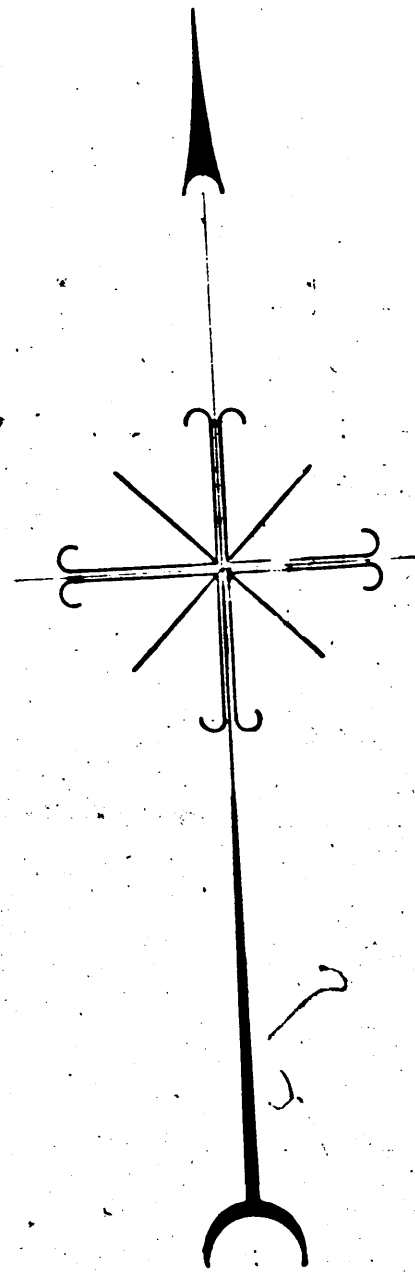
0124-A

Superior Court Case No. 235722
Suit for Condemnation
Filed Oct. 11th 1927
City of Los Angeles, Plaintiff
vs
R. F. Swigart et al., Def.

Interlocutory judgment as per
map, rendered May 22nd 1929.
Judg. Bk. 730-124.

Final judgment in favor of Pl'tff.
as per map, rendered Apr. 10, 1931.

D:84-130, — O.R.10825-100



MAP
SHOWING THE LAND TO BE
CONDEMNED FOR THE WIDENING
OF
RIDGEVIEW AVENUE
BETWEEN
COLLEGE VIEW AVENUE

AND
A POINT APPROXIMATELY 200 FEET
SOUTHWESTERLY OF COLLEGE VIEW AVENUE
IN THE
CITY OF LOS ANGELES, CAL.

IN ACCORDANCE WITH ORDINANCES NOS. 55692 AND 57647
JOHN C. SHAW CITY ENGINEER APRIL 1927

SCALE: 1 IN=100 FT.

Sht. 41

Land to be condemned shown colored red.
Dotted lines and dimensions show property holdings in
those cases where they differ from recorded subdivisions.
Figures in circles indicate the parcel numbers as set forth
in paragraph VIII of the complaint.

0124-A

A-1519