

EIGHTH AVENUE (W.S.) SLAUSON AVE. to 59th S.
FILE NO. 2670-24 JOB NO. 63329

MAP
SHOWING THE LAND TO BE CONDEMNED
FOR THE WIDENING OF
EIGHTH AVENUE
FROM
SLAUSON AVENUE
TO
FIFTY-NINTH STREET
IN THE
CITY OF LOS ANGELES, CALIF.
IN ACCORDANCE WITH ORDINANCE NO. 58533
JOHN C. SHAW-CITY ENGINEER. SEPTEMBER 1927

Scale 1"=100'

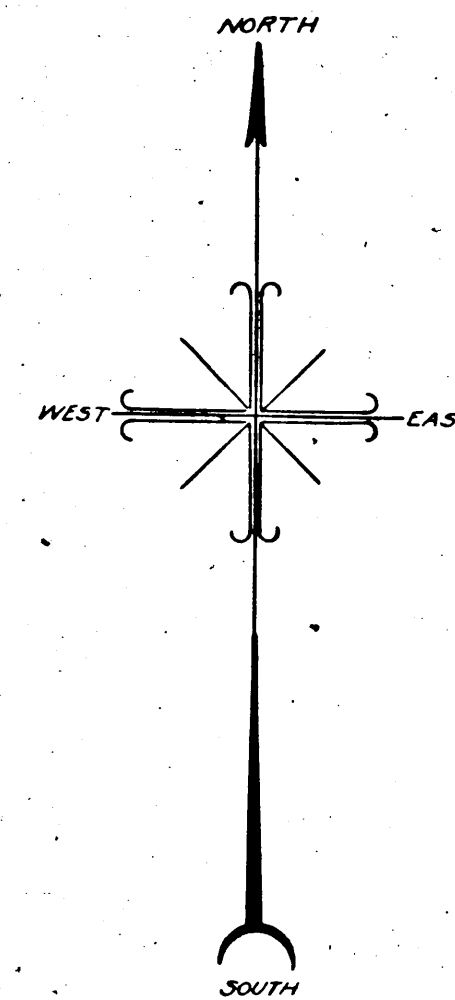
Note:
Land to be condemned shown colored red.

Superior Court Case No. 235964
Suit for Condemnation
Filed Oct. 14th 1927
City of Los Angeles, Plaintiff
Vs
Sisters of St. Joseph in Calif-
ornia et al., Def.

Final judgment in favor of Pl'tff. as
per map, rendered October 8, 1928.

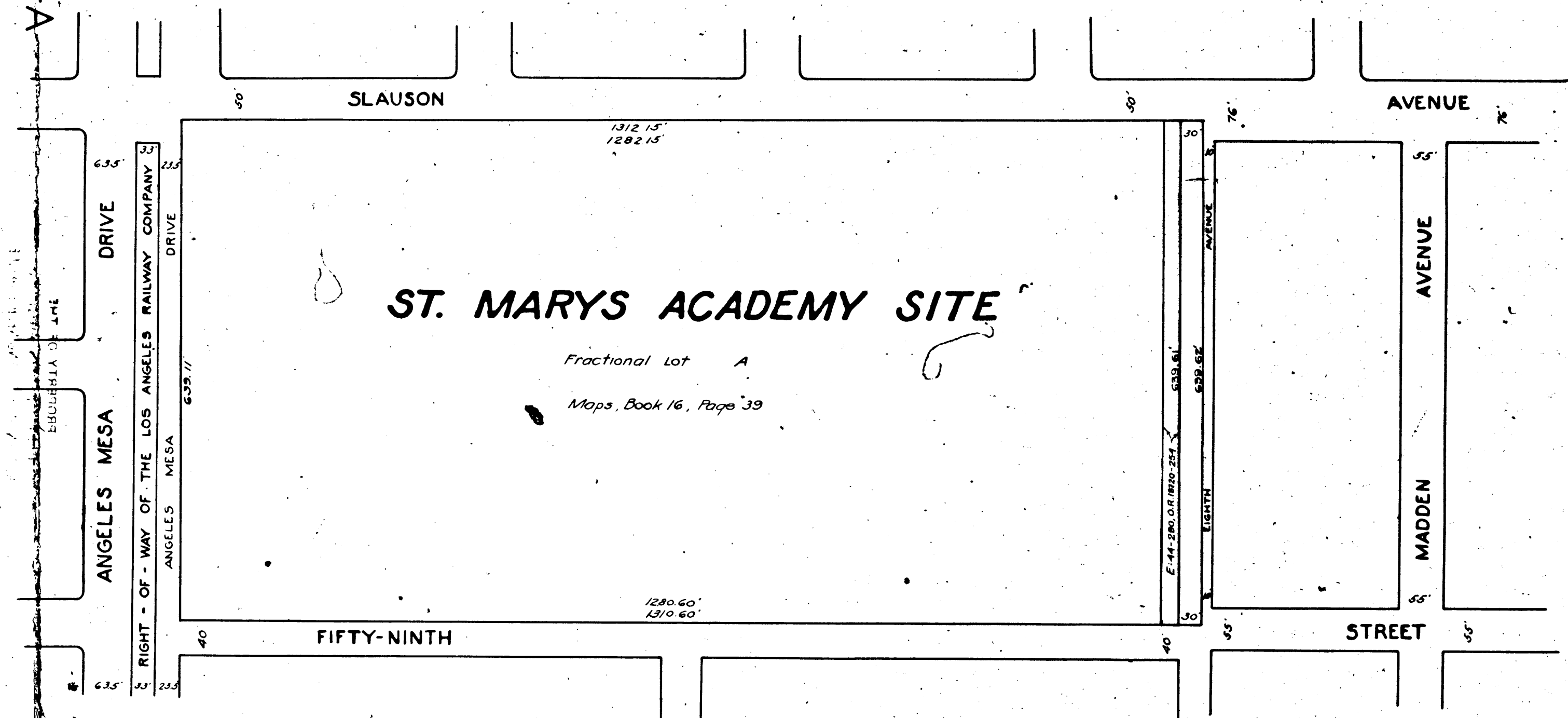
D:70-67, O.R.7187-213
Sht. 24

A-4764



4074-A

4074-A



ST. MARYS ACADEMY SITE

Fractional Lot A
Maps, Book 16, Page 39

SLAUSON

AVENUE

FIFTY-NINTH

STREET

AVENUE

MADDEN

DRIVE

ANGELES MESA

RIGHT-OF-WAY OF THE LOS ANGELES RAILWAY COMPANY

ANGELES MESA

1312.15'
1282.15'

1280.60'
1310.60'

E-44-290, O.R. 11870-254

E-44-290, O.R. 11870-254