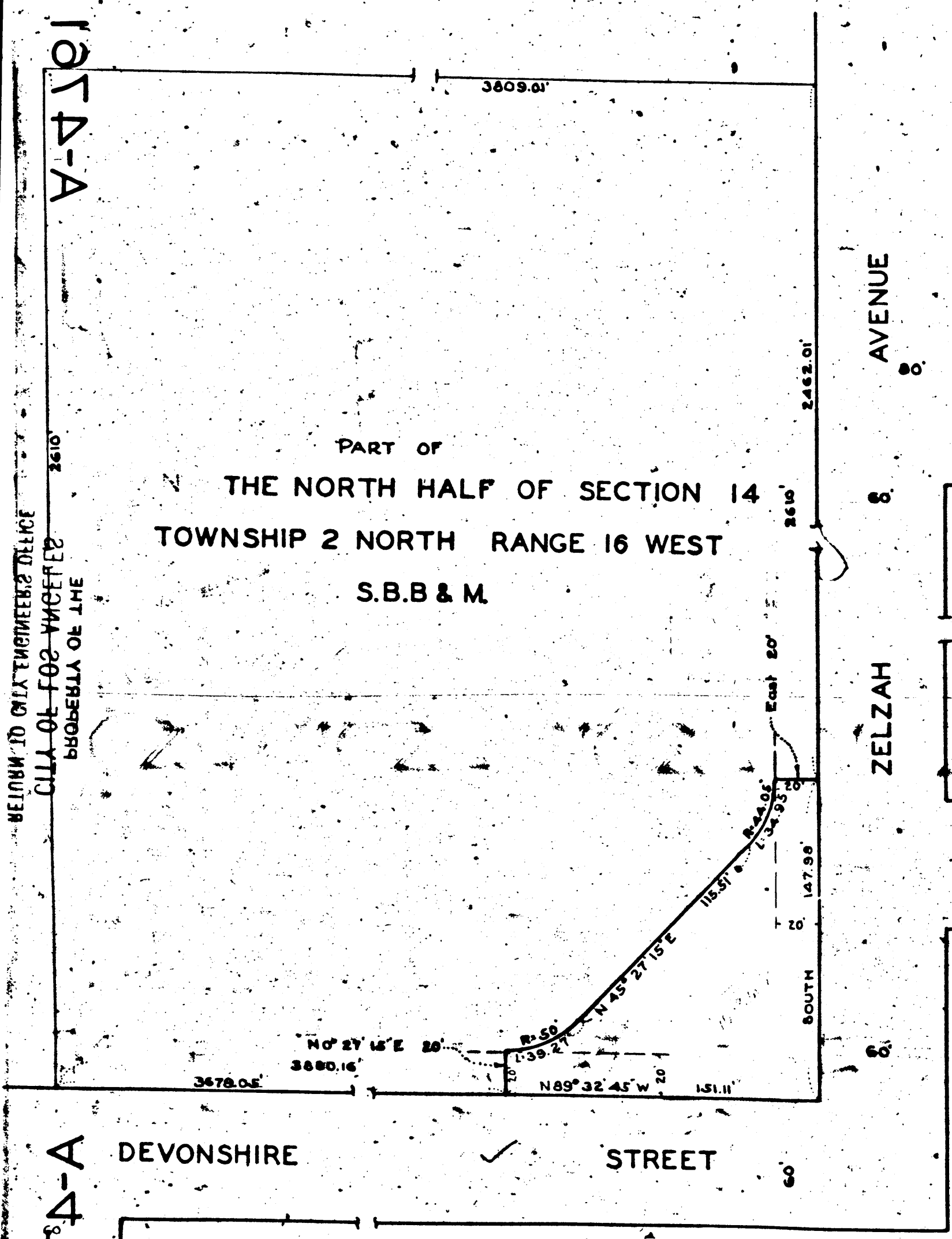


DEVONSHIRE ST. AND ZELZAH AVE. IMPROVEMENT DISTRICT.  
FILE NO. 3944-1925 JOB NO. 20805

1074-A

1074-A

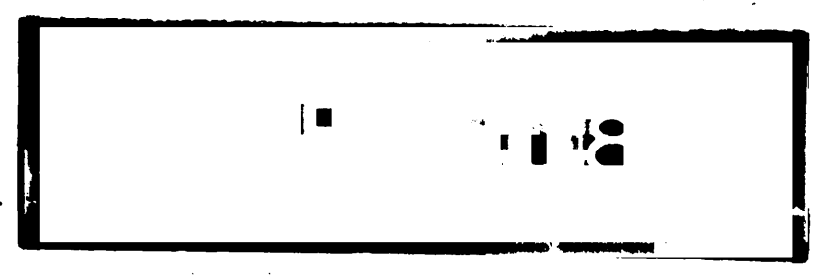


**MAP**  
 SHOWING LAND TO BE CONDEMNED  
 FOR  
**PUBLIC STREET PURPOSES**  
 SITUATED AT THE INTERSECTION OF THE WESTERLY LINE  
 OF  
**ZELZAH AVENUE**  
 WITH THE NORTHERLY LINE  
 OF  
**DEVONSHIRE STREET**  
 IN ACCORDANCE WITH ORDINANCE NO. 58517  
 IN THE CITY OF LOS ANGELES CALIF.

JOHN C. SHAW, CITY ENGINEER SEPTEMBER 1927

SCALE: 1 INCH = 50 FEET  
NOTE: LAND TO BE CONDEMNED SHOWN COLORED RED

Sht. 56  
*Superior Court Case No. 236427  
 Suit for Condemnation  
 Filed Oct. 21<sup>st</sup> 1927  
 City of Los Angeles, Plaintiff  
 vs  
 B. F. Porter Estate et al., Def.  
 Proceedings abandoned Sept. 14, 1932.*



A-4761

A-4761

RESEDA AVENUE

A-4761

RETURN TO CITY ENGINEER'S OFFICE  
CITY OF LOS ANGELES  
PROPERTY OF THE