

51  
51

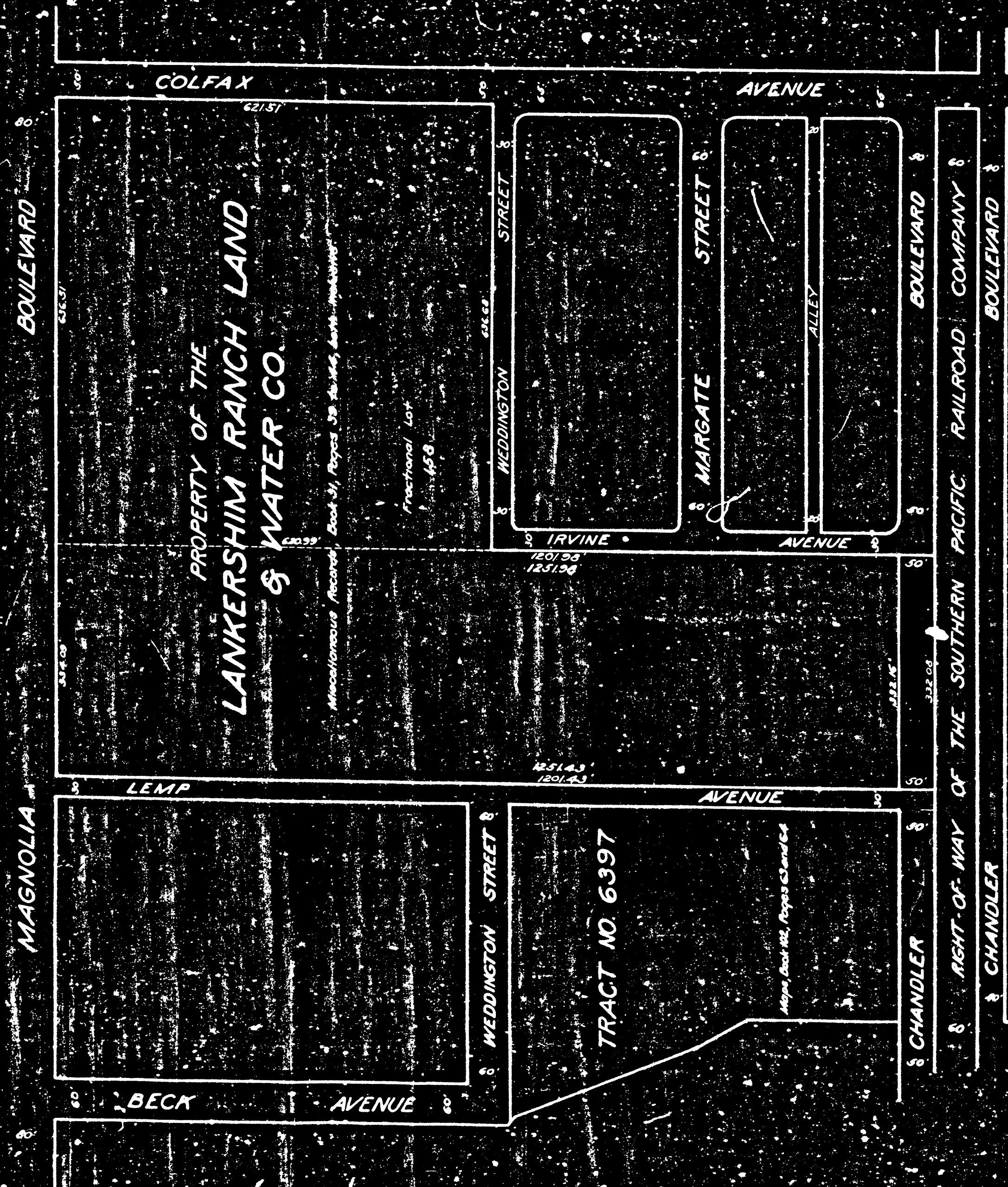
CHANDLER BOULEVARD(S/R) - LEMP AVENUE TO IRVINE AVENUE  
FILE NO. 4768-27 JOB NO. 64416

COSTA A

COSTA A

COSTA A

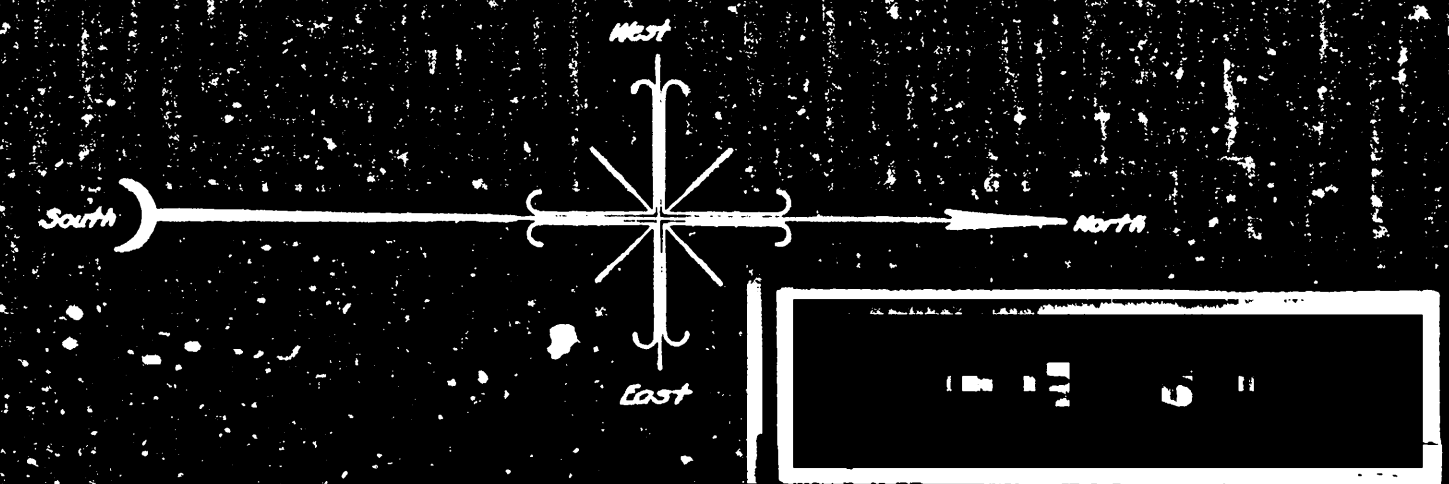
COSTA A



Superior Court Case No. 236923  
 Suit for Condemnation  
 Filed Oct. 27<sup>th</sup> 1927  
 City of Los Angeles, Plaintiff  
 Vs  
 Emma J. Wilson et al., Def.  
 Final judgment in favor of Pltff.  
 as per map, rendered Nov. 7, 1928.  
 D:70-93, O.R. 7392-10.

MAP  
 SHOWING THE LAND TO BE CONDEMNED  
 FOR THE  
 OPENING AND EXTENDING OF  
 THE SOUTHERLY ROADWAY OF  
**CHANDLER BOULEVARD**  
 FROM  
**LEMP AVENUE**  
 TO  
**IRVINE AVENUE**  
 IN THE  
 CITY OF LOS ANGELES, CALIF.  
 IN ACCORDANCE WITH ORDINANCE NO. 58491  
 JOHN C SHAW-CITY ENGINEER SEPTEMBER 1927  
 Scale 1"=100'

Notes:  
 Land to be condemned shown colored red.  
 Dotted Lines and dimensions indicate property holdings  
 in those cases where they differ from recorded subdivisions.



A-4760