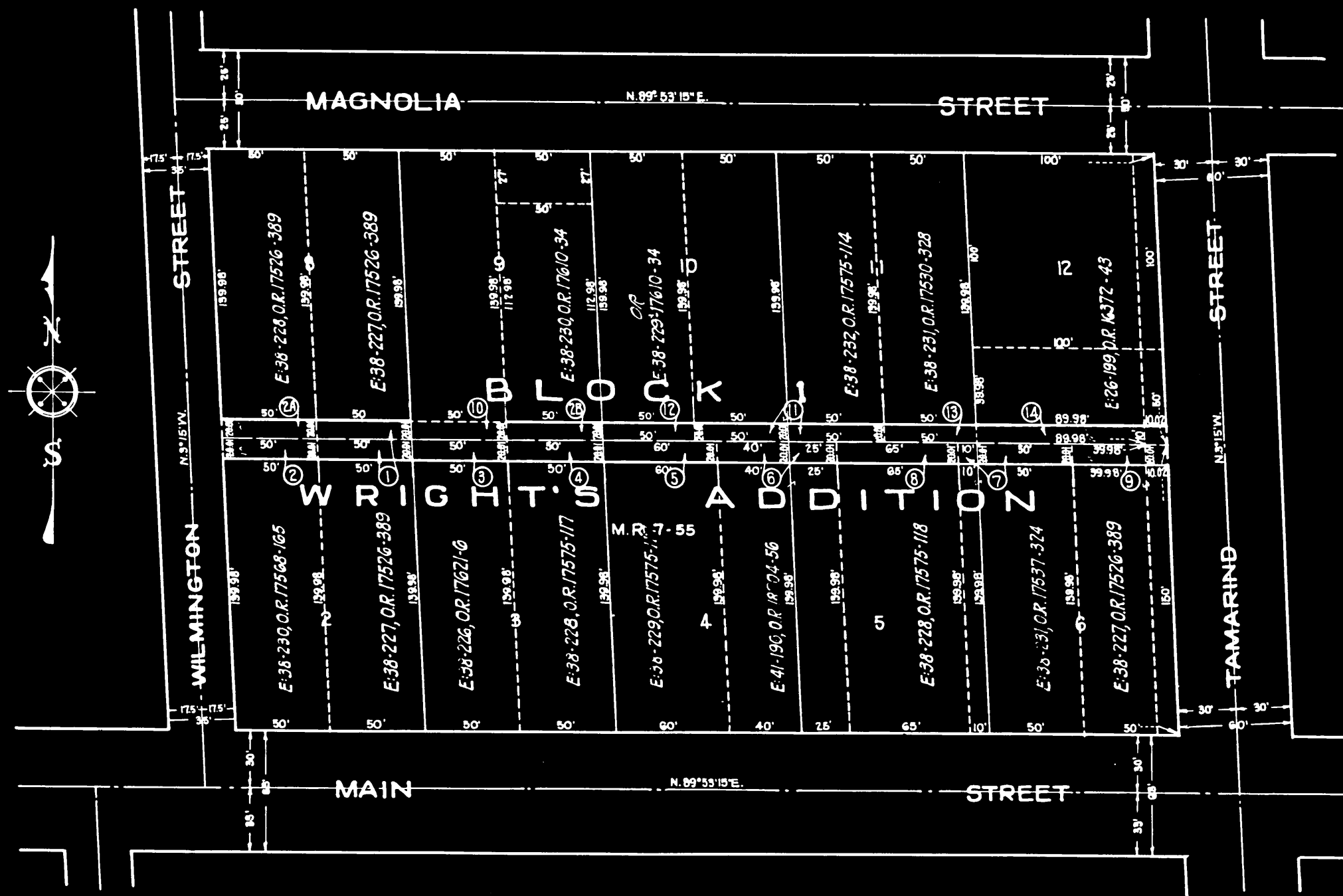


EXHIBIT "C"

DIAGRAM
 SHOWING PARCELS OF LAND TO BE CONDEMNED
 FOR THE OPENING AND WIDENING OF AN
ALLEY IN BLOCK ONE
 WRIGHTS ADDITION TO THE TOWN OF COMPTON, BE-
 TWEEN TAMARIND STREET AND WILMINGTON STREET —
 IN THE CITY OF
COMPTON, CALIFORNIA
 NOVEMBER GLEN ROOD, CITY ENGINEER
 SCALE: 1" = 60'
 Sheet 26

Note: —
 Colored portion indicates land to be condemned.



C.F. 1513 -

Superior Court Case No. 239804
 Suit for Condemnation
 Filed Dec. 6th 1927
 City of Compton, Pltff.
 Vs.
 Katheline M. Parriott, et. al. — Def.
 Pending Mar. 10, 1928
 Case dismissed Apr. 21, 1939

CIVIL DIVISION
 SUPERIOR COURT
 COUNTY OF LOS ANGELES
 CALIFORNIA

CIVIL DIVISION
 SUPERIOR COURT
 COUNTY OF LOS ANGELES
 CALIFORNIA

