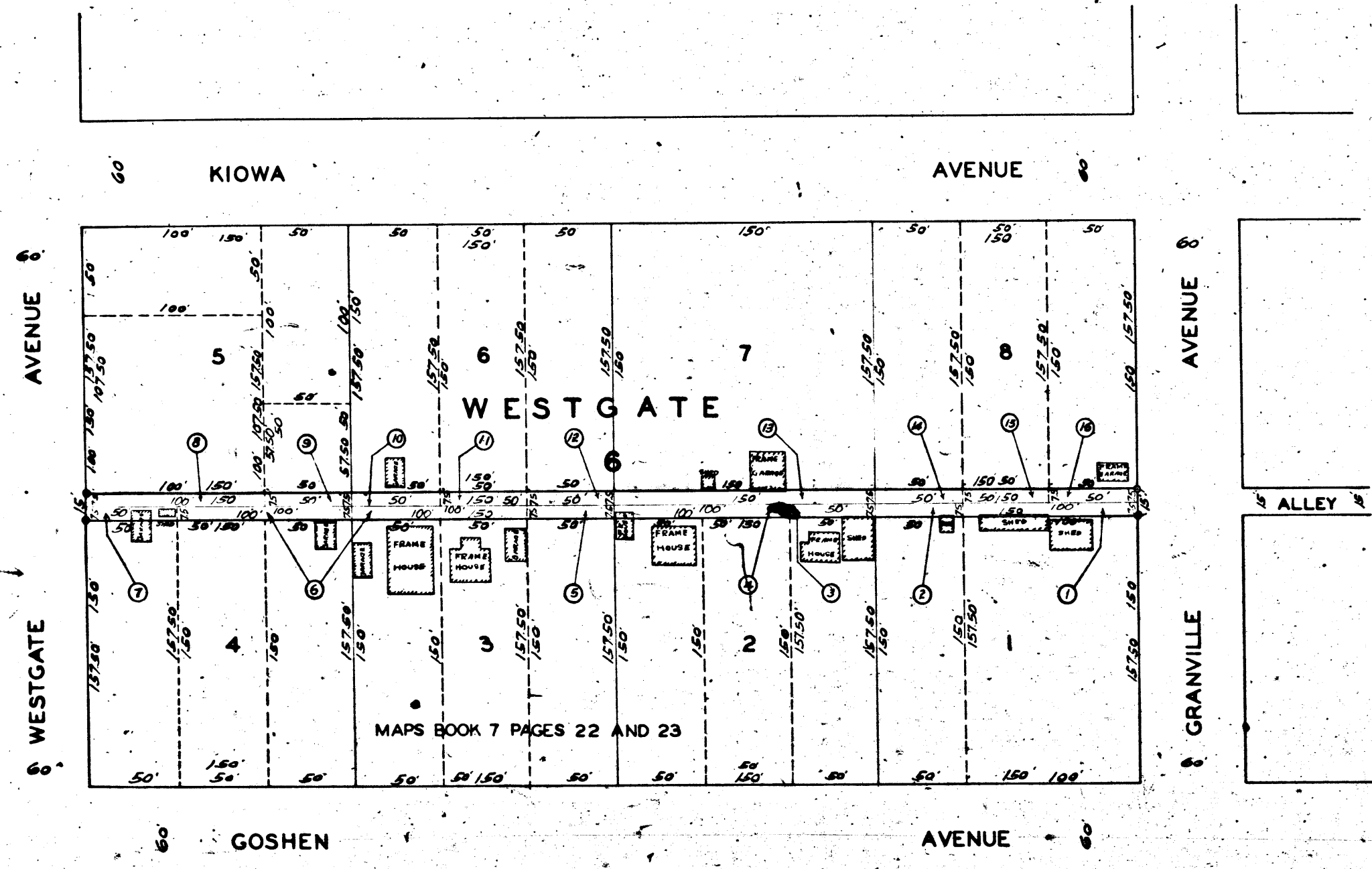


A-4697

A-4697

A-4697

A-4697



MAP
 SHOWING THE
 LAND TO BE CONDEMNED
 FOR THE
 OPENING AND EXTENDING
 OF THE FIRST
 ALLEY
 SOUTHEASTERLY OF KIOWA AVENUE
 FROM
 GRANVILLE AVENUE
 TO
 WESTGATE AVENUE
 IN THE CITY OF
 LOS ANGELES CAL.

Superior Court Case No. 239370
 Suit for Condemnation
 Filed Nov. 30, 1927
 City of Los Angeles, Plaintiff
 Vs.
 Clyde E. Way, et al. Def.
 Interlocutory judgment as per
 map, rendered Aug. — 1929.
 Judg. Bk. 733-186.
 Final judgment in favor of Plff. as per
 map, rendered January 26th, 1933.
 D:90-11, O.R. 11982-273.

IN ACCORDANCE WITH ORDINANCES NOS. 57237 AND 58333
 JOHN C. SHAW, CITY ENGINEER AUGUST 1927
 SCALE: 1 IN. = 50 FT.

Land to be condemned shown colored red.
 Dotted lines and dimensions show property holdings in those cases
 where they differ from recorded subdivisions.
 Figures in Circles indicate the parcel numbers as set forth in
 Paragraph VIII of the complaint.

Shf. 21

A-4697