

See other end of this map for data in condemnation.
INDEX 75424

MAP
SHOWING LOCATION
OF PROPERTIES
SOUGHT TO BE CONDEMNED
BY THE
BOARD OF WATER & POWER COMMISSIONERS
OF THE
CITY OF LOS ANGELES
ON
98TH STREET
BETWEEN MCKINLEY AVE. & WESTERN AVE.
AUGUST 1927

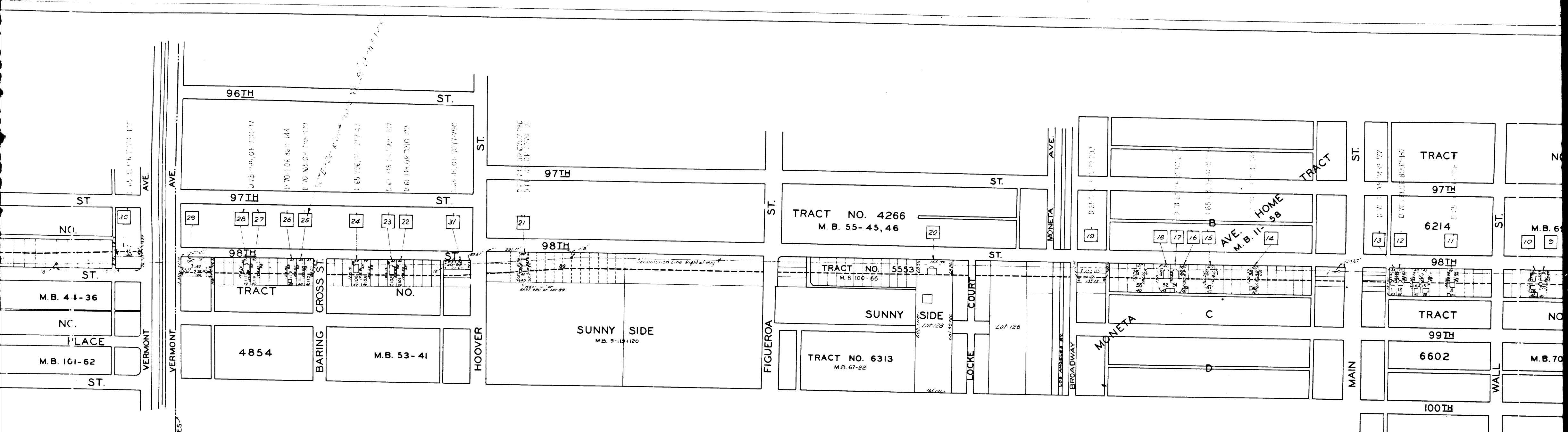
SCALE IN FEET
0 100 200 300 400 500 600

APPROVED BY *L. F. Matthews*
Chief Electrical Engineer and General Manager
Bureau of Water and Light
Department of Water and Power
City of Los Angeles

SUPERIOR COURT CASE NO. EXHIBIT
Superior Court Case: The City of Los Angeles, a municipal corporation, and The Board of Water & Power Commissioners of the City of Los Angeles, a municipal corporation, PLAINTIFFS, vs. FRANK N. ABENS et al. DEFENDANTS.

CITY OF LOS ANGELES

C.F. 1516 -



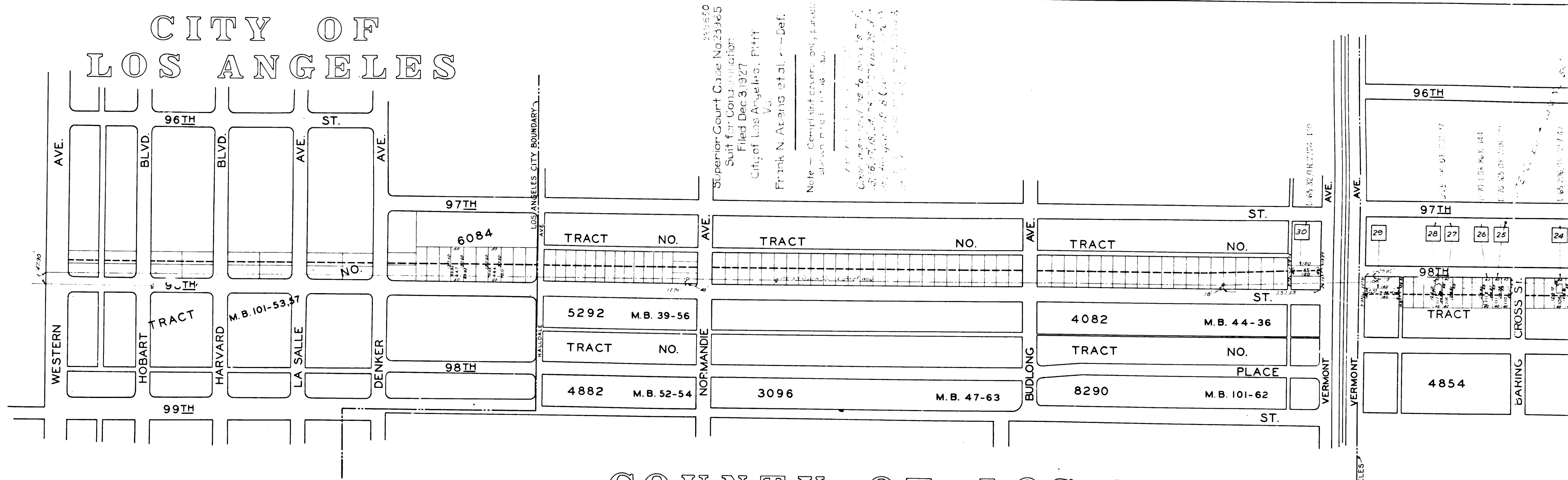
LOS ANGELES CITY OF LOS ANGELES
SHOESTRING STRIP

W BDRY-CITY OF LOS ANGELES

2
C.F. 1516 -

C

CITY OF LOS ANGELES



Superior Court Case No. 23965
 Suit for Contribution
 Filed Dec 3, 1927
 City of Los Angeles, Plaintiff
 vs.
 Frank N. Adams et al., Defendants
 Note: Complaint covers only parcels shown in this map.
 Check this map as to parcels in City of Los Angeles, California, and your own records.

COUNTY OF LOS ANGELES CITY