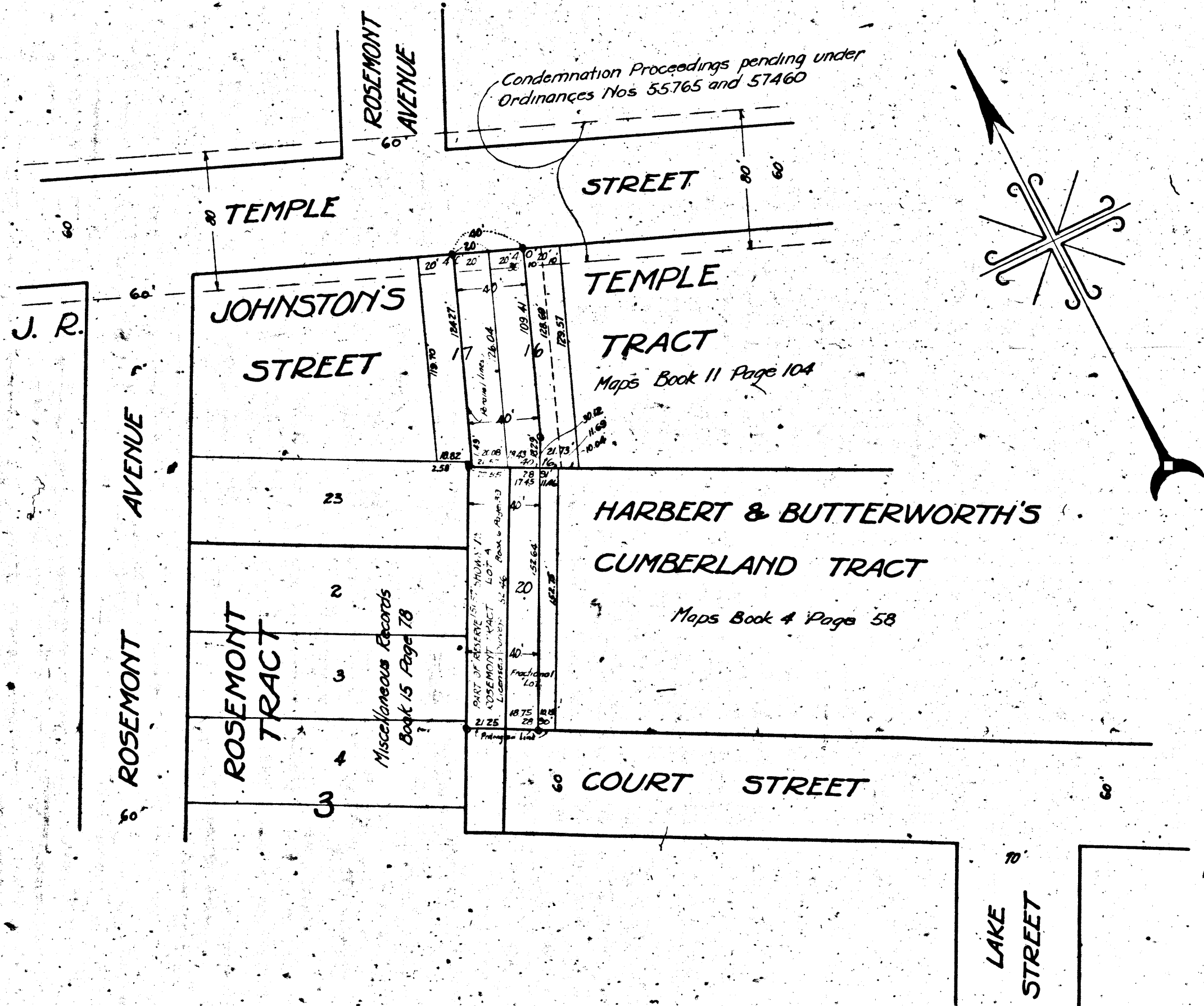


0684-A

0684-A



MAP  
SHOWING THE LAND TO BE CONDEMNED  
FOR THE OPENING OF A NEW STREET  
TO BE KNOWN AS  
**ROSELAKE AVENUE**  
FROM  
A POINT IN TEMPLE STREET APPROXIMATELY TWO  
HUNDRED (200) FEET EASTERLY OF ROSEMONT AVENUE  
TO  
THE TERMINUS OF COURT STREET APPROXIMATELY  
THREE HUNDRED (300) FEET WESTERLY OF LAKE STREET  
IN THE  
CITY OF LOS ANGELES, CAL.

IN ACCORDANCE WITH ORDINANCES NOS 57725 AND 59335  
JOHN C SHAW City Engineer NOVEMBER 1927  
SCALE 1 INCH = 50 FEET

Notes:  
Land to be condemned shown colored red.  
Dotted lines and dimensions show property holdings  
in those cases where they differ from recorded subdivisions.

0684-A

0684-A