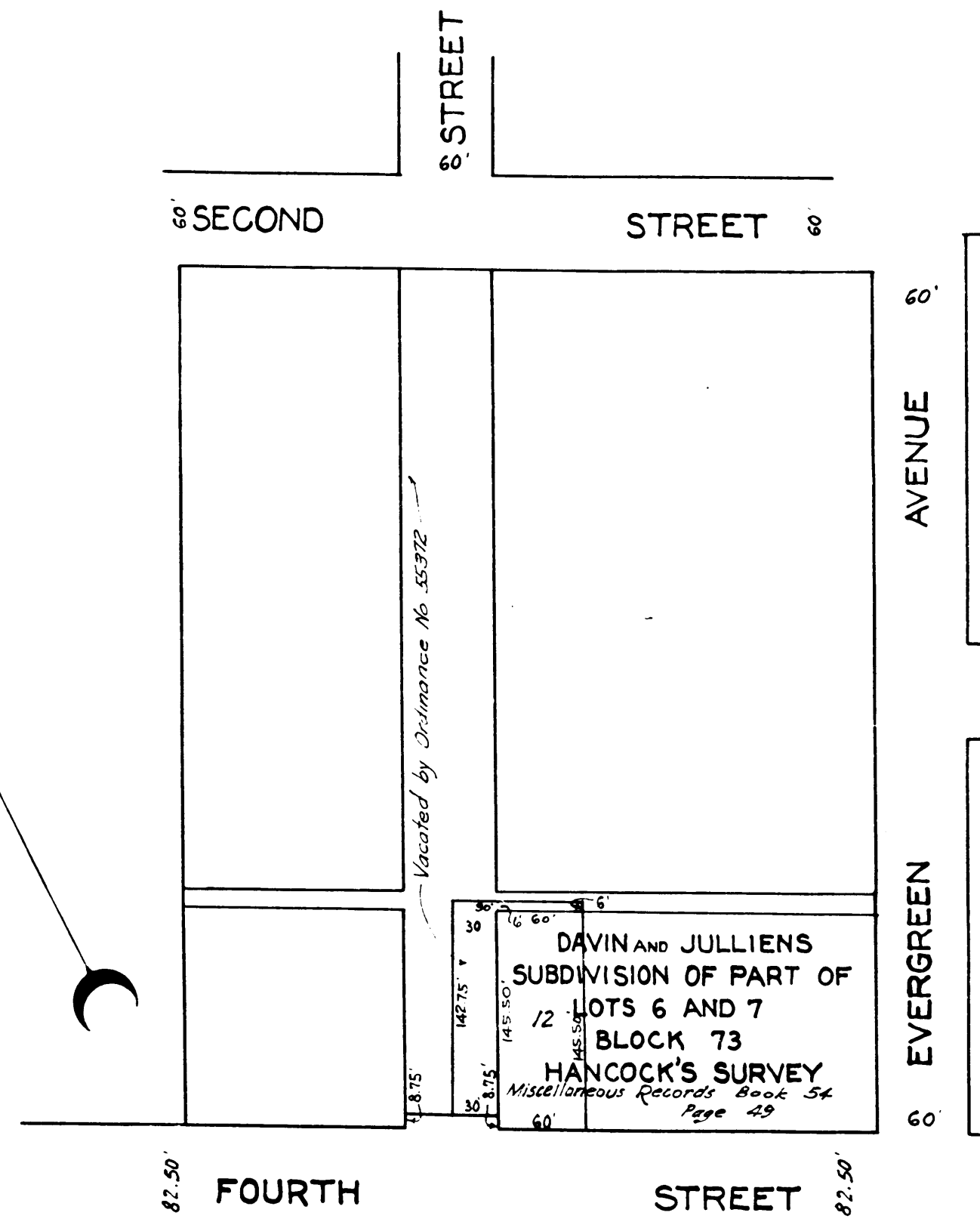
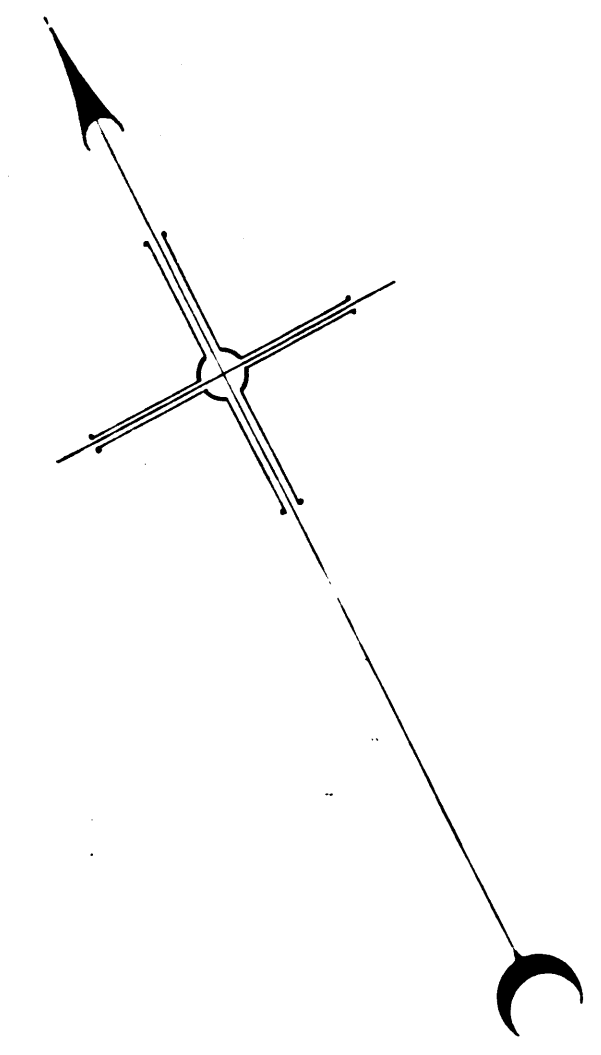


DAVIN & JULLIENS PLAYGROUND SITES \*18051

Sht-2

0484-A

0484-A



MAP  
 SHOWING THE LAND TO BE CONDEMNED  
 FOR  
 PUBLIC PLAYGROUND PURPOSES  
 AT THE  
 NORTHEASTERLY CORNER OF  
 FOURTH STREET  
 AND  
 SAVANNAH STREET  
 IN THE

CITY OF LOS ANGELES, CALIF.  
 IN ACCORDANCE WITH ORDINANCE NO. 58875  
 JOHN C. SHAW CITY ENGINEER NOVEMBER, 1927

*Note: Land to be condemned  
 shown colored red*

*Scale: 1 in = 100 ft.*

*Sht. 4  
 Superior Court Case No. 241252  
 Suit for Condemnation  
 Filed Dec. 22<sup>nd</sup> 1927  
 City of Los Angeles, Plaintiff  
 Vs  
 J. M. Meyer et al., Defendants.  
 Case dismissed July 8<sup>th</sup> 1930.*

0484-A

0484-A

C.F. 1527 -

A-4840