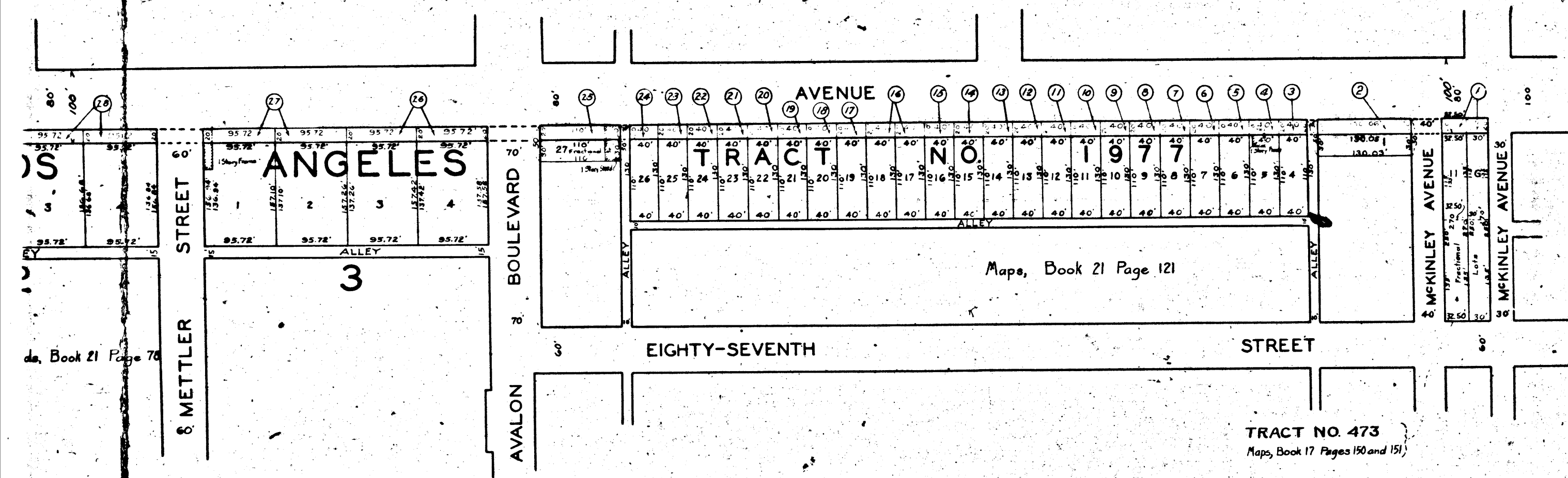


Superior Court Case No. 245763  
 Suit for Condemnation  
 Filed Feb. 23<sup>rd</sup> 1928  
 City of Los Angeles, Plaintiff  
 Vs.  
 Ralph M. Cross et al., Def.  
 Interlocutory judgment as per  
 map, rendered June 5<sup>th</sup> 1931.  
 Judg. Bk. 760-327.  
 Final Judgment in favor of Plff as per  
 map rendered February 6<sup>th</sup>, 1934.

D. 90-253, O.R. 12577-224.

MAP  
 SHOWING THE LAND  
 TO BE CONDEMNED  
 FOR THE WIDENING  
 OF  
**MANCHESTER AVENUE**  
 ALONG THE SOUTHERLY LINE  
 THEREOF  
 FROM THE EASTERLY ROADWAY OF  
**MCKINLEY AVENUE**  
 TO  
**WALL STREET**  
 IN THE CITY OF LOS ANGELES, CALIFORNIA  
 IN ACCORDANCE WITH ORDINANCES NOS. 57674 AND 59353  
 JOHN C. SHAW CITY ENGINEER      DECEMBER 1927  
 SCALE 1 INCH = 100 FEET

NOTES  
 Land to be condemned shown colored red.  
 Dotted lines and dimensions show property holdings  
 in those cases where they differ from recorded subdivisions.  
 Figures in circles indicate parcel numbers as set forth  
 in paragraph IX of the complaint.



A-4867

V-480-A

V-480-A

