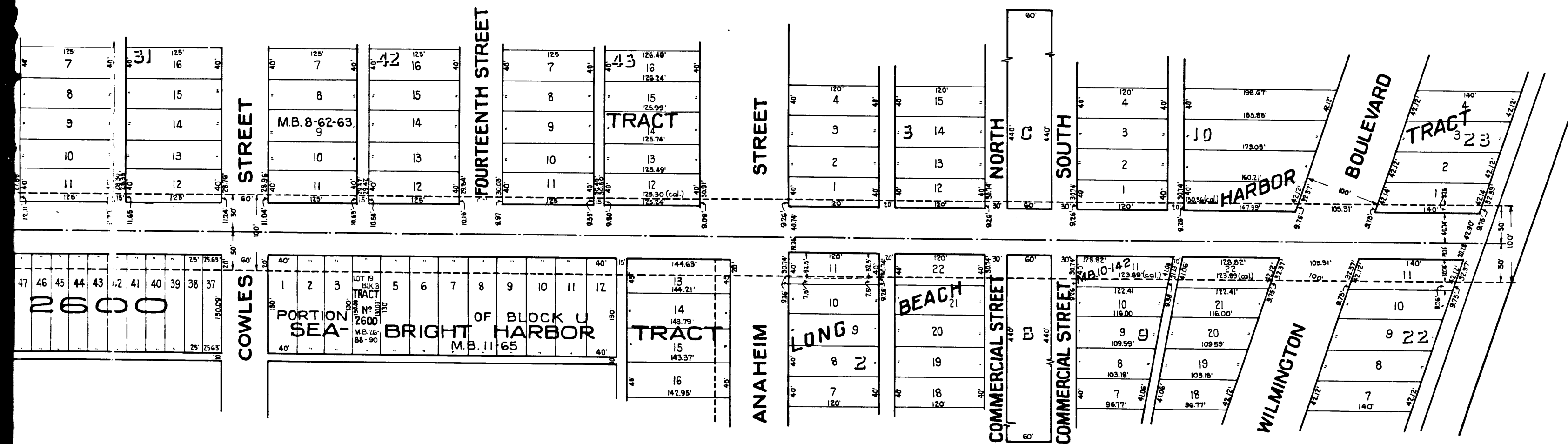


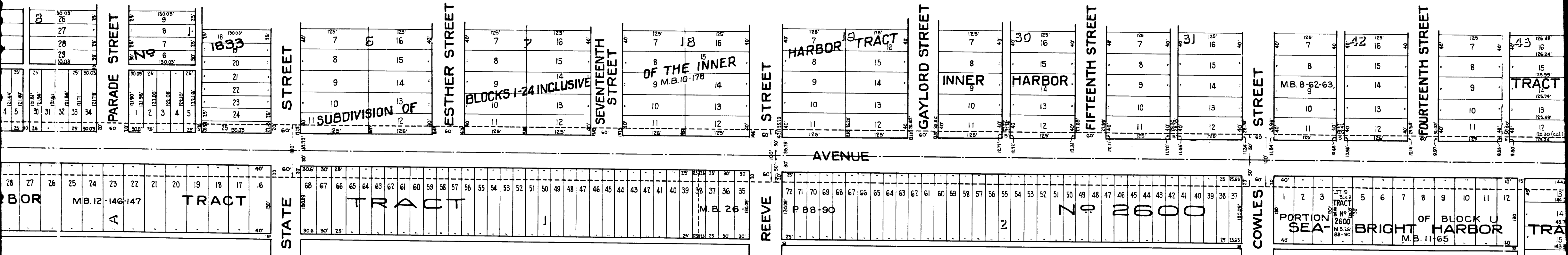
Sheet 30
Superior Court Case No. LBC-1574
Suit for Condemnation
Filed Jan. 31, 1928
City of Long Beach, Plff.
Vs.
May E. Anderson, et al. Def.

*Interlocutory judgment as per
map made Oct. 4th 1928.
Judge. 154 738-21.
Proceedings abandoned Oct. 19, 1931
and various judgments of dismissal
of record.*

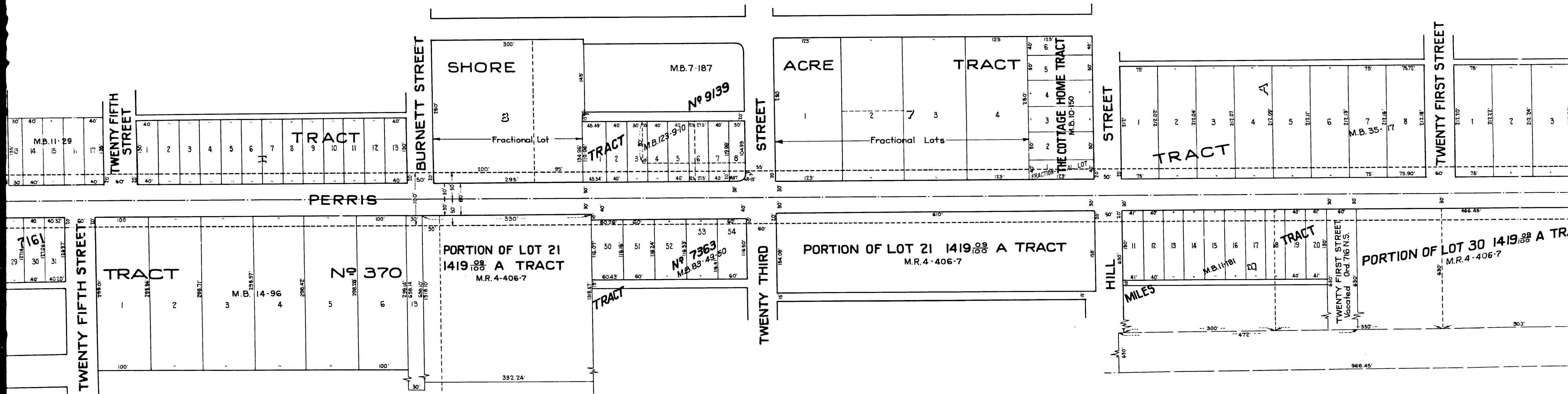


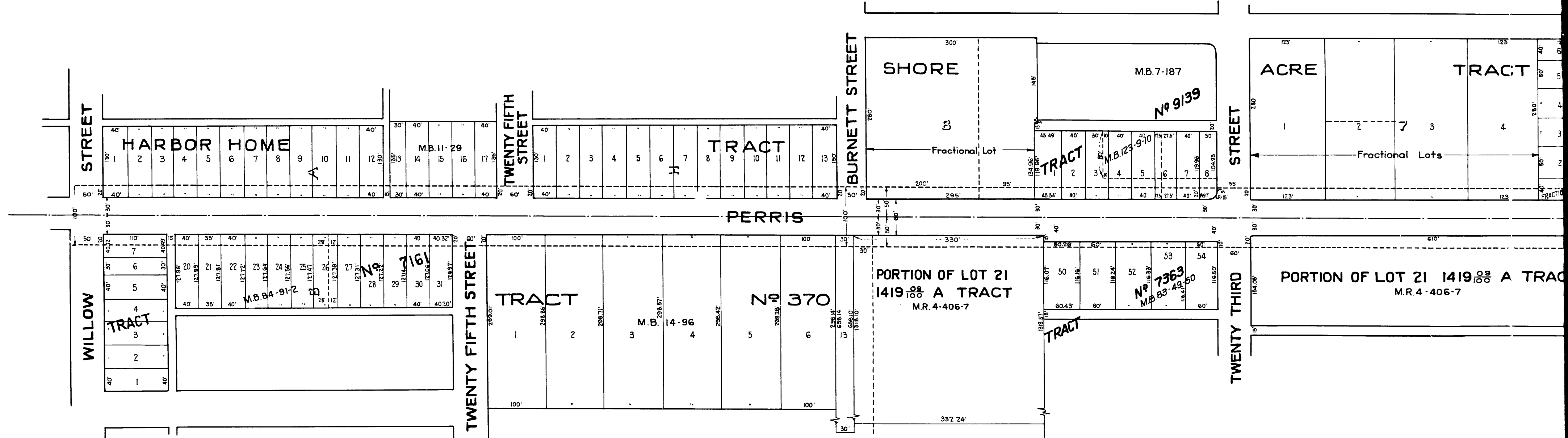
Land to be taken tinted red.

C.F. 1534-



C.F. 1534-





5

C.F. 1534-