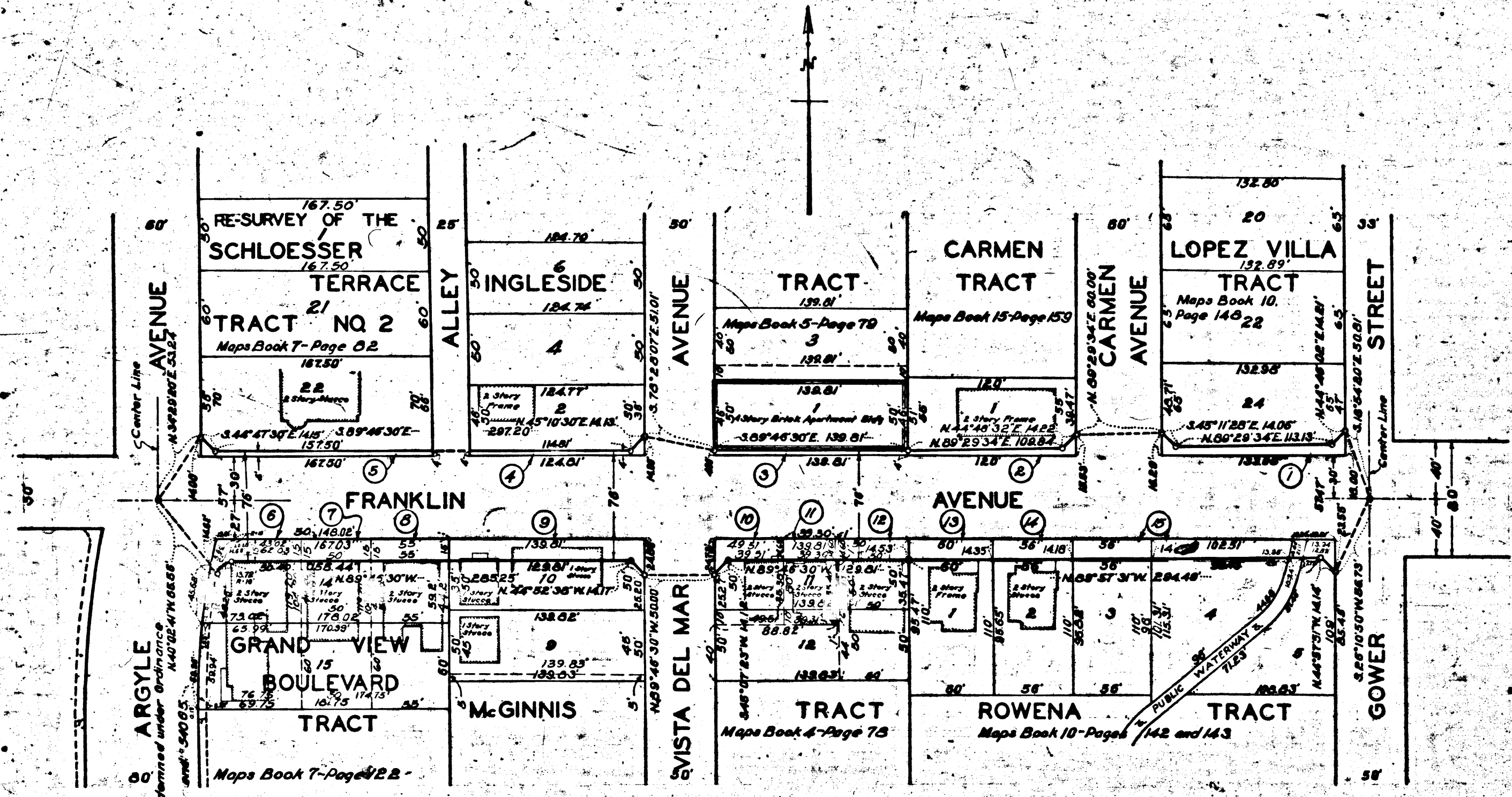


MAP
 SHOWING THE LAND TO BE CONDEMNED
 FOR THE
 WIDENING AND LAYING OUT OF
FRANKLIN AVENUE
 FROM
 GOWER STREET TO ARGYLE AVENUE
 IN
 THE
 CITY OF LOS ANGELES CALIFORNIA
 IN ACCORDANCE WITH ORDINANCES NO'S 58295 AND 59880
 JOHN C. SHAW CITY ENGINEER
 1927.

NOTE.
 Land to be condemned colored Red. Dotted Lines and Dimensions show property holdings where they differ from recorded subdivisions. The figures in circles indicate the Parcel Numbers set forth in Paragraph VIII of the complaint.

Sht 40
 Superior Court Case No. 246866
 Suit For Condemnation
 Filed Mar. 8th 1928
 City of Los Angeles, Plaintiff
 Vs
 Emil C. Wagner, et al., Def.
 Interlocutory judgment as per map, rendered Sept. 24, 1929.
 Judg. Bk. 742-68.
 Final judgment in favor of Plt'ff. as per map, rendered Dec. 15th, 1930.

D:84-39, O.R. 10487-325



15742