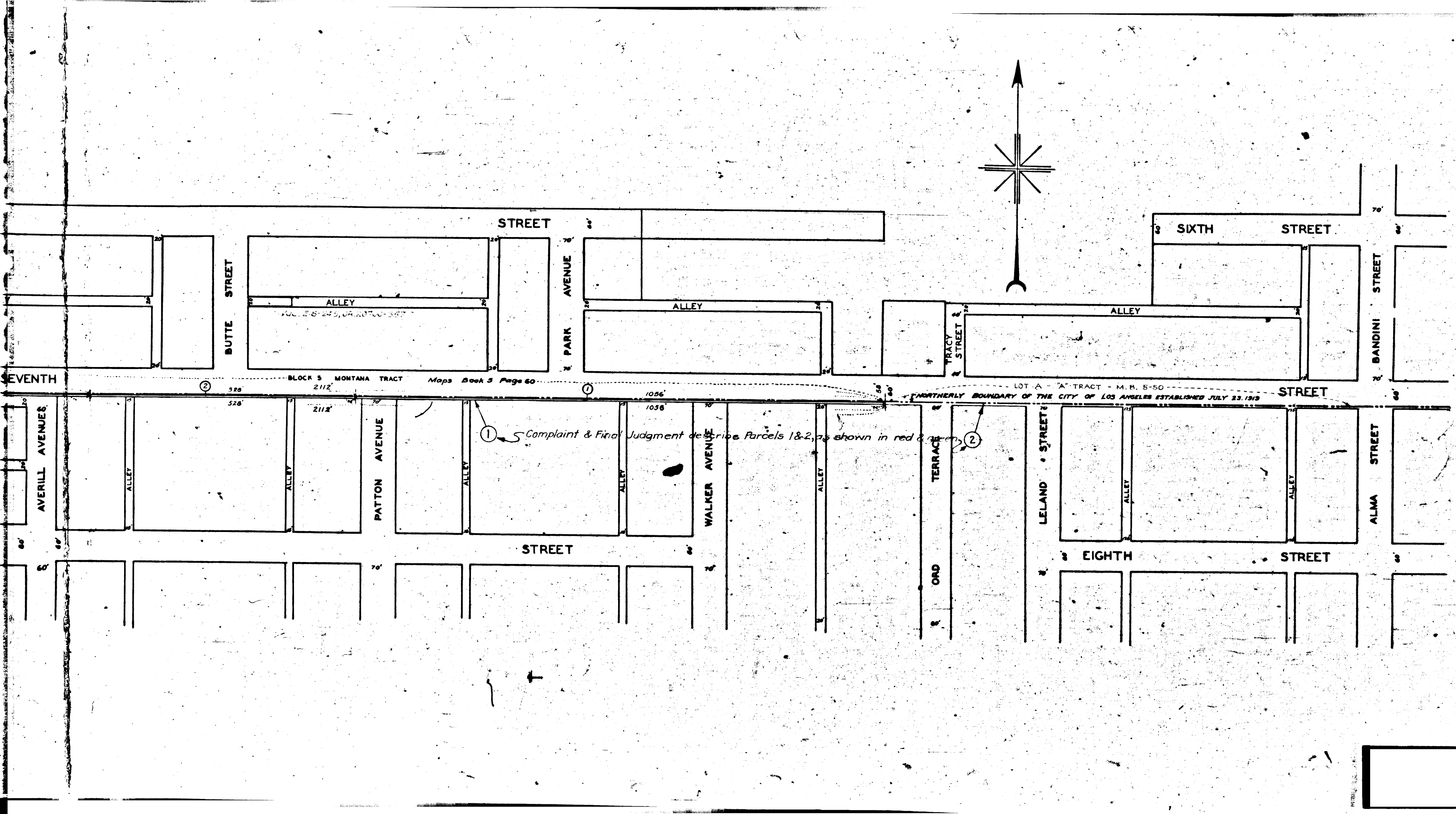
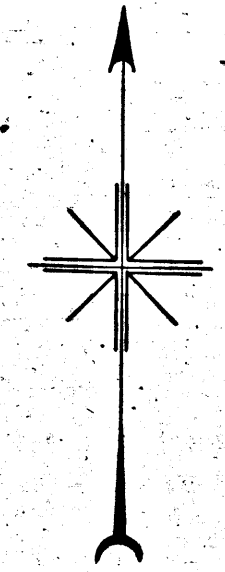


SEVENTH ST BETWEEN LELAND ST. AND WEYMOUTH
FILE-1071-27 ORDER NO 59030



MAP
SHOWING THE LAND TO BE CONDEMNED
FOR THE
OPENING WIDENING AND LAYING OUT
OF
SEVENTH STREET
(SAN PEDRO DISTRICT)
BETWEEN
ALMA STREET
AND
WEYMOUTH AVENUE
IN THE CITY OF LOS ANGELES CALIFORNIA
IN ACCORDANCE WITH ORDINANCE NO 58781
JOHN C. SHAW CITY ENGINEER JANUARY 1928
SCALE 1 INCH = 100 FEET

NOTES
LAND TO BE CONDEMNED SHOWN COLORED RED.
DOTTED LINES AND DIMENSIONS SHOW PROPERTY HOLDINGS IN THOSE
CASES WHERE THEY DIFFER FROM THE RECORDING SUBDIVISIONS.
FIGURES IN CIRCLES INDICATE THE PARCEL NUMBERS AS SET FORTH IN
PARAGRAPH XII OF THE COMPLAINT.

*Superior Court Case No. 246739.
Suit for Condemnation
Filed Mar. 7th 1928
City of Los Angeles, Plaintiff
Vs.
Phillip M. Gaffey et al., Def.*

*interlocutory decree as per map render-
ed Dec. 12, 1928, Judg. Bk. 693-250
Final judgment in favor of Plt^{'s}, as per
map, rendered February 6th, 1929.*

D:70-228, O.R. 9055-104
Sht. 29

