

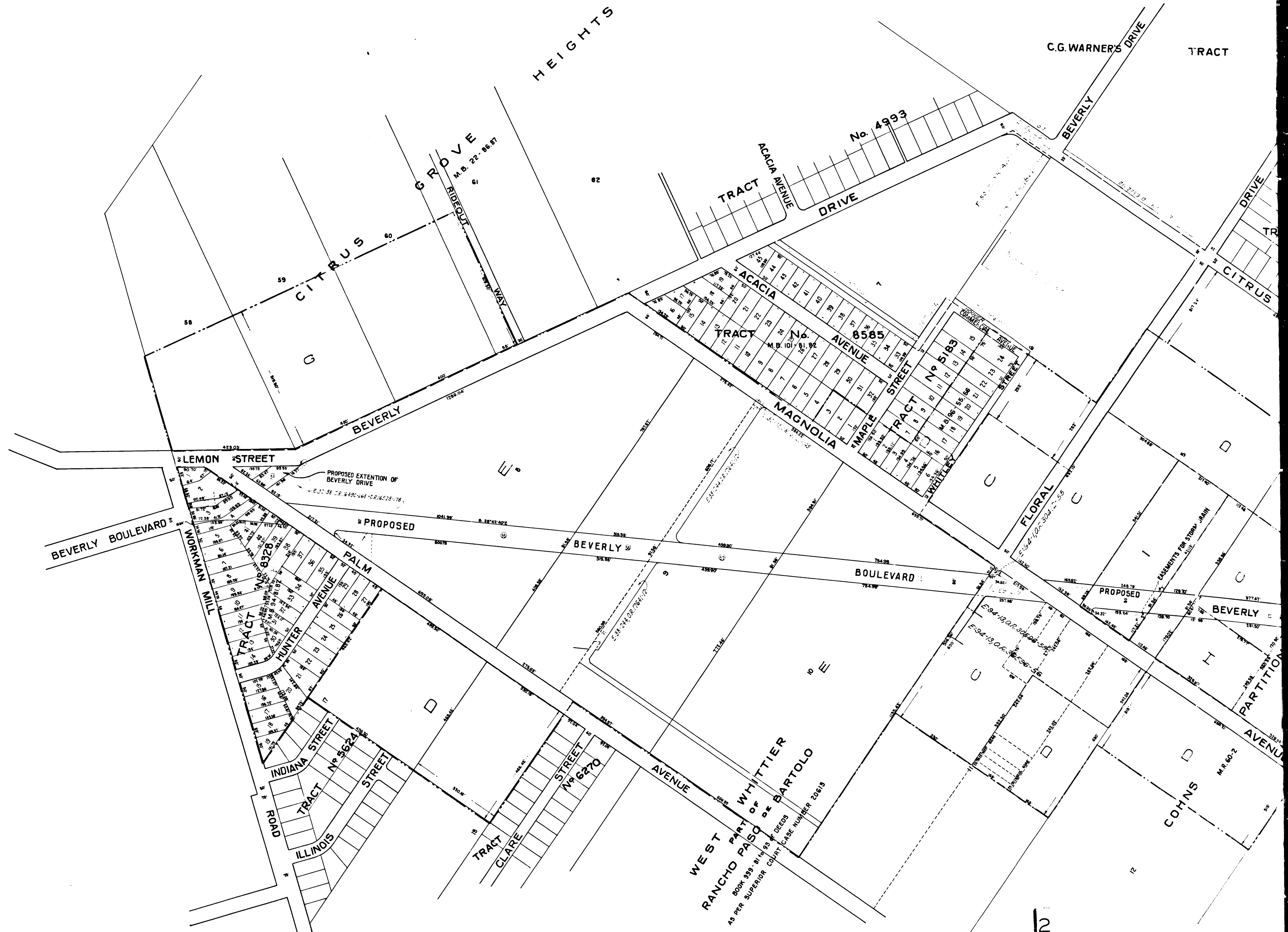
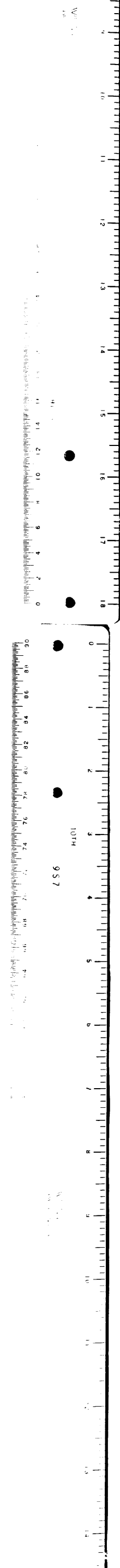


EXHIBIT "A"
MAP OF ACQUISITION AND IMPROVEMENT DISTRICT NO. 1
OF THE CITY OF WHITTIER

Hereon the mark ' means feet.
 Small figures next to the property lines show, each, the length of adjacent line in feet.
 Larger figures show numbers of the lots.
 Dotted lines show property lines in those cases where the actual holdings differ from the recorded subdivisions.
 ——— Indicates the exterior boundaries of the assessment district.
 - - - - - Indicates the boundaries of the different zones.
 The different zones are designated by large letters, as, - E
 Lands to be taken are indicated thus: — □ —
 Small figures in circles, as, - ① - indicate the numbers of the various parcels to be taken.
 Hereon M.R. means Miscellaneous Records and M.B. means MapBook
 All records referred to hereon are records of Los Angeles County, California.

Superior Court Case No 245496
 Suit for Condemnation
 Filed March, 1928
 City of Whittier - Pitff.
 Vs.
 Whittier Finance Corporation et al. Def.
 Interlocutory Decree as amended rendered
 Dec. 11, 1928. Judge Ex. 495-216
 Final Judgment rendered at Whittier, Cal.
 Map prepared March 1928.
 City of Whittier 1928-1929

C.F. 1548-



WEST PART OF WHITTIER OF BARTOLO
BOOK 599 - 81 - 93 OF DEEDS
AS PER SUPERIOR COURT CASE NUMBER 20613

12

C.F. 1548-