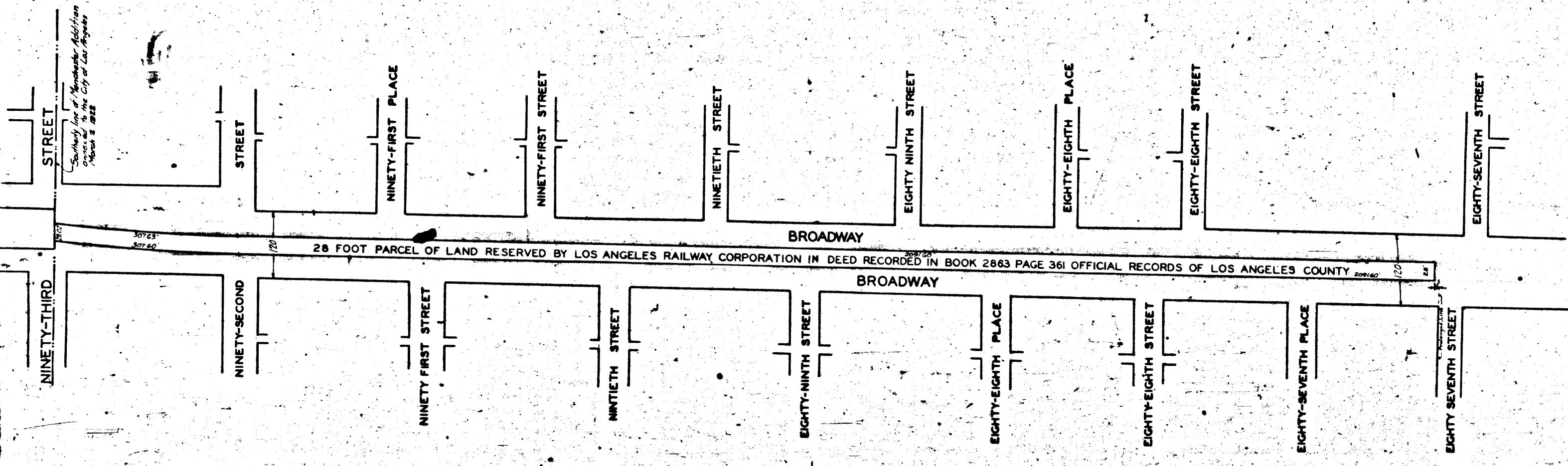


3404-A

3404-A

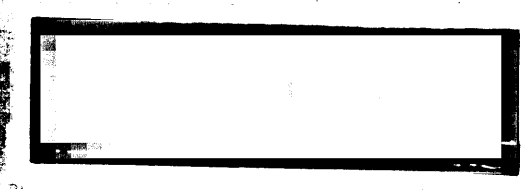
O & W BROADWAY (28 FT STRIP) BETWEEN  
MANCHESTER AVE AND NINETY-THIRD ST  
FILE 4632-25 CHARGE 35933



**MAP**  
 SHOWING THE LAND TO BE CONDEMNED  
 FOR  
**PUBLIC STREET PURPOSES**  
 BETWEEN  
 THE EASTERLY AND WESTERLY ROADWAYS OF  
**BROADWAY**  
 AND BETWEEN  
 E. EIGHTY-SEVENTH STREET  
 AND  
 THE SOUTHERLY LINE OF NINETY-THIRD STREET  
 IN THE CITY OF LOS ANGELES, CALIFORNIA  
 IN ACCORDANCE WITH ORDINANCES NOS. 57693 AND 59709  
 JOHN G. SHAW CITY ENGINEER JANUARY 1928  
 SCALE 1 INCH = 100 FEET

*Sh. Superior Court Case 13-1339  
 Suit for Condemnation  
 Filed Apr. 24th 1928  
 City of Los Angeles, Pl. vs.  
 L. A. Railway Corp. et al.  
 Case dismissed Aug. 29, 1934*

NOTES  
 LAND TO BE CONDEMNED SHOWN COLORED RED  
 NO RAILROAD RIGHT OF WAY  
 See Title Search - Broadway #10 June 26<sup>th</sup> 1935



3404-A