

MAP SHOWING BY A BOUNDARY LINE THE EXTENT OF THE TERRITORY INCLUDED IN THE ASSESSMENT DISTRICT TO PAY THE EXPENSE OF LAYING OUT AND OPENING OF A CERTAIN PUBLIC STREET IN THE CITY OF AVALON, CALIFORNIA.

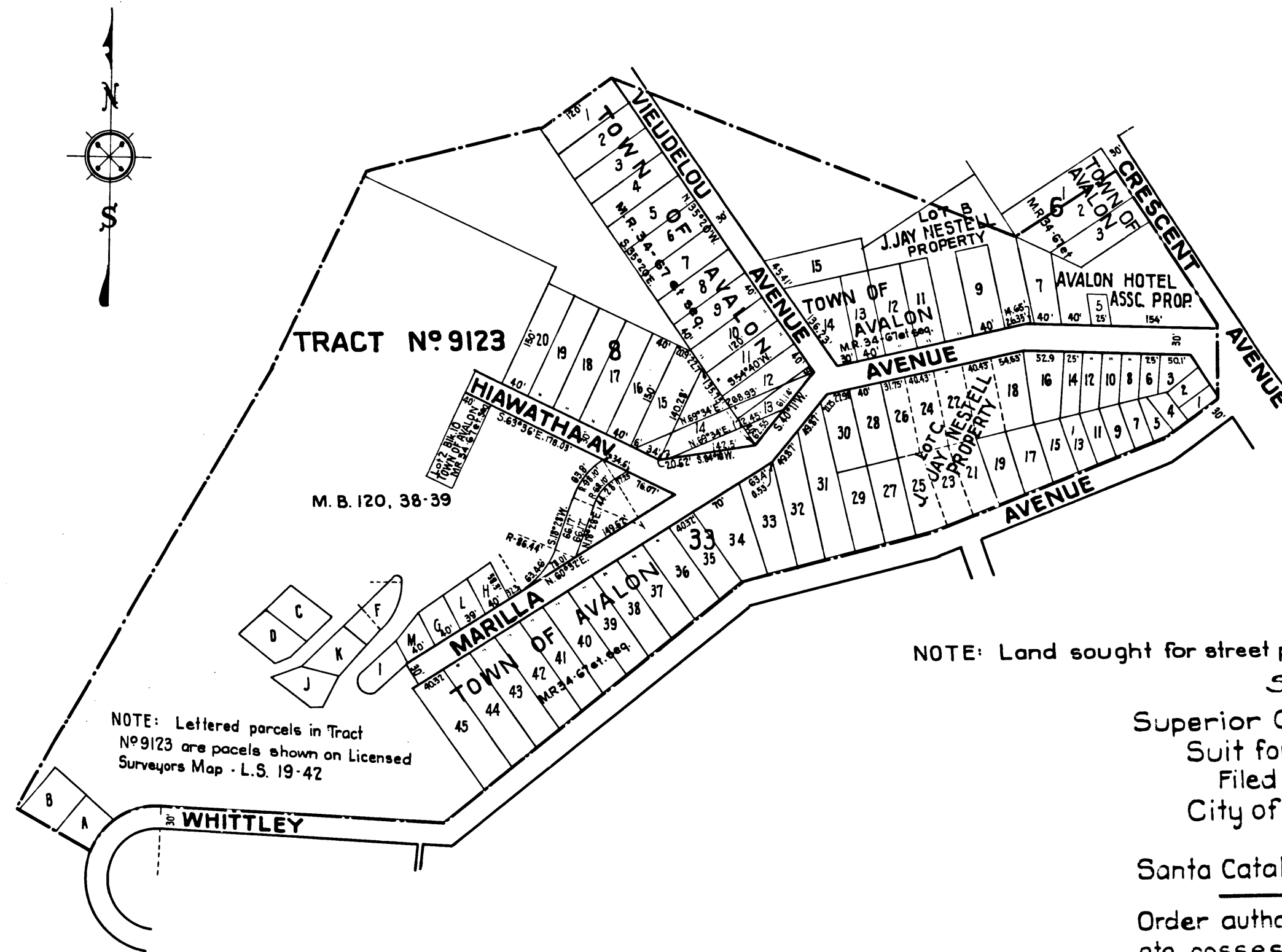
ALSO SHOWING THE LOCATION, GENERAL ROUTE AND TERMINI OF THE RIGHT OF WAY SOUGHT TO BE CONDEMNED IN THE ABOVE ENTITLED ACTION BY THE CITY OF AVALON, CALIFORNIA. — ALSO ALL PARCELS OF LAND TO BE CONDEMNED AND ALL LARGER PARCELS OF WHICH THEY ARE A PART.

SCALE: 1" = 150

NOTE:—

This is not a complete copy of map in case.

EXHIBIT 'C'



NOTE: Lettered parcels in Tract No. 9123 are parcels shown on Licensed Surveyors Map - L.S. 19-42

NOTE: Land sought for street purposes shown colored red.
Sheet 19

Superior Court Case No. 217156
Suit for Condemnation.
Filed Feb. 9, 1927
City of Avalon — Pltff.
Vs.
Santa Catalina Island Co. et. al. — Def.

Order authorizing Pltff. to take immediate possession of property sought to be condemned. June 7, 1927.

Case dismissed Nov. 9th 1928

C.F. 1553 -