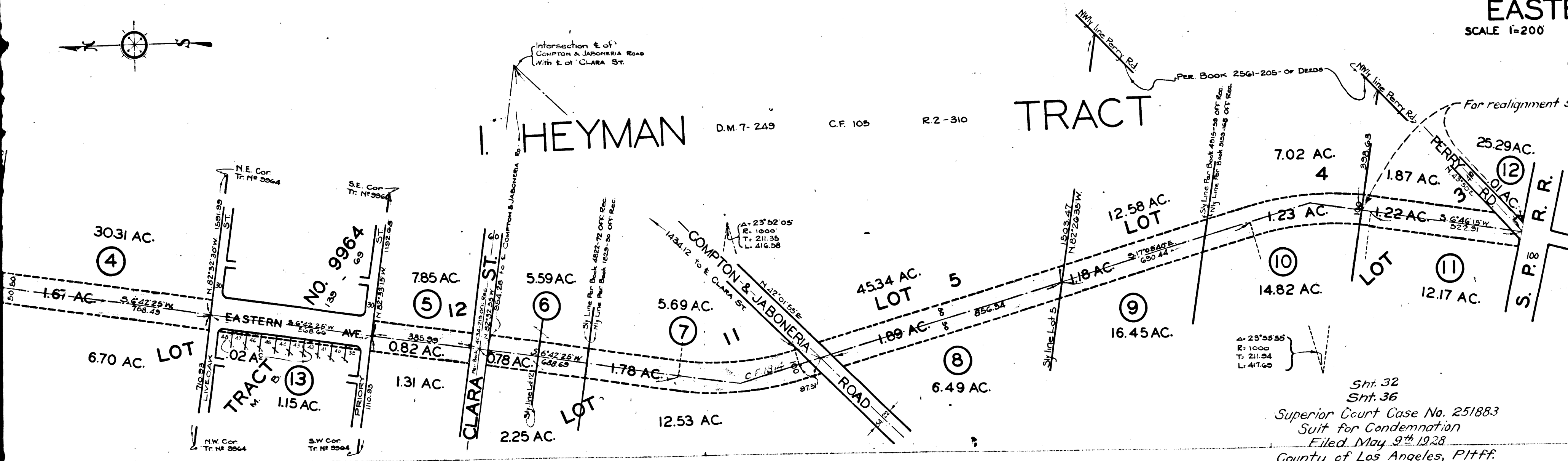
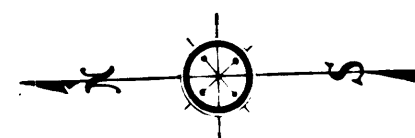


MAP SHOWING  
LAND TO BE CONDEMNED FOR  
EASTERN AVENUE  
SCALE 1-200 MARCH 20, 1928



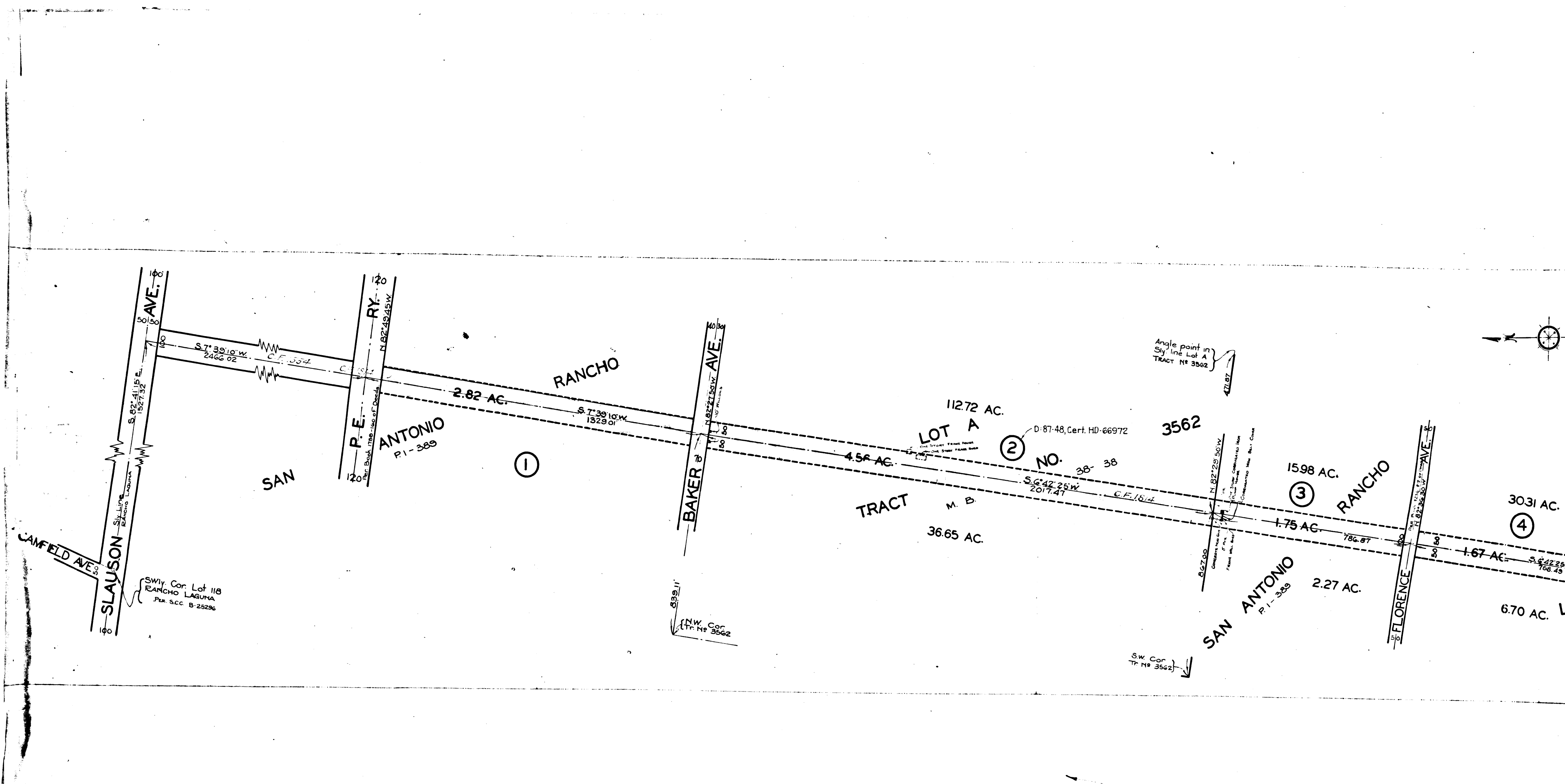
Sht. 32  
Sht. 36  
Superior Court Case No. 251883  
Suit for Condemnation  
Filed May 9<sup>th</sup> 1928  
County of Los Angeles, Pltff.  
Vs  
Ethelyn Andrews et al., Def.  
Order for immediate possession 5-5-1928.  
Case dismissed as to parcels 2, 5, 6,  
7 and 8 on July 24, 1933.  
Proceedings abandoned June 7, 1938.

LEGEND:  
PORTION TO BE CONDEMNED  
SHOWN COLORED RED.

49-1, C.F. 1814.

C.F. 1555-





Notes: For Deeds for Eastern Ave. See C.S.-B/49-1, C.F. 1814.

3  
C.F. 1555-