

SCALE: 1"=50'

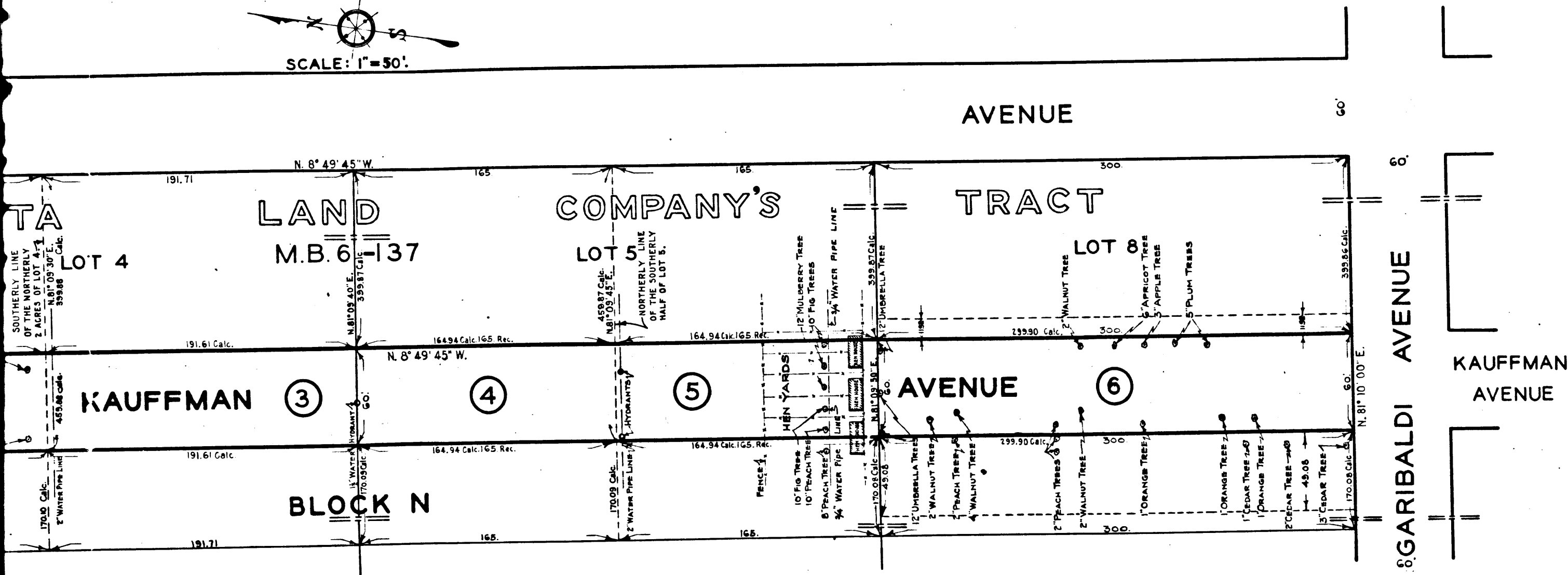


EXHIBIT "A"  
 ACQUISITION AND IMPROVEMENT DISTRICT NO. 79  
 OF THE COUNTY OF LOS ANGELES  
 FOR THE OPENING, EXTENDING, IMPROVEMENT  
 OF AND WORK UPON  
**KAUFFMAN AVENUE**

MAP SHOWING PROPERTY TO BE ACQUIRED IN ACCORDANCE WITH THE PROVISIONS  
 OF THE "ACQUISITION AND IMPROVEMENT ACT OF 1925," APPROVED MAY 23, 1925.  
 SCALE: 1"=50' OCTOBER, 1927.

J. E. ROCKHOLD - COUNTY SURVEYOR.

LEGEND

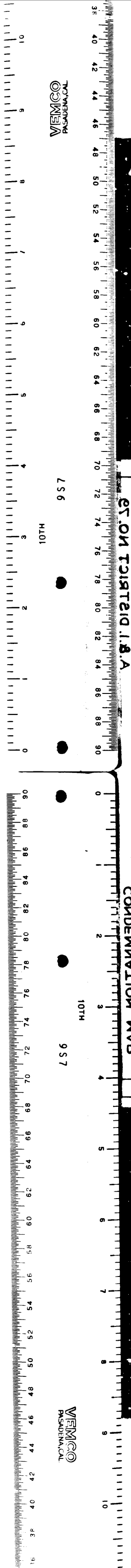
LAND SOUGHT TO BE ACQUIRED SHOWN IN RED.  
 NUMBERS IN CIRCLES INDICATE PARCELS SOUGHT TO BE CONDEMNED.  
 THE PARCELS ARE DESCRIBED IN PARAGRAPH VII OF THE COMPLAINT.  
 PORTION COLORED RED SHOWS LOCATION, GENERAL ROUTE AND  
 TERMINI OF PUBLIC ROAD TO BE CONDEMNED.

Superior Court Case No. 251896  
 Suit for Condemnation  
 Filed May 9th 1928  
 County of Los Angeles, Plff.  
 Vs  
 David E. Blancy et al. Def

A. & I. DISTRICT NO. 79		
DRAWN BY	H.E.M.	OCT. 1927.
TRACED BY	H.E.M.	OCT. 1927.
CHECKED BY	T.L.H.	NOV. 1927.

C.F. 1556-





VENCO  
PASADENA, CALIF.

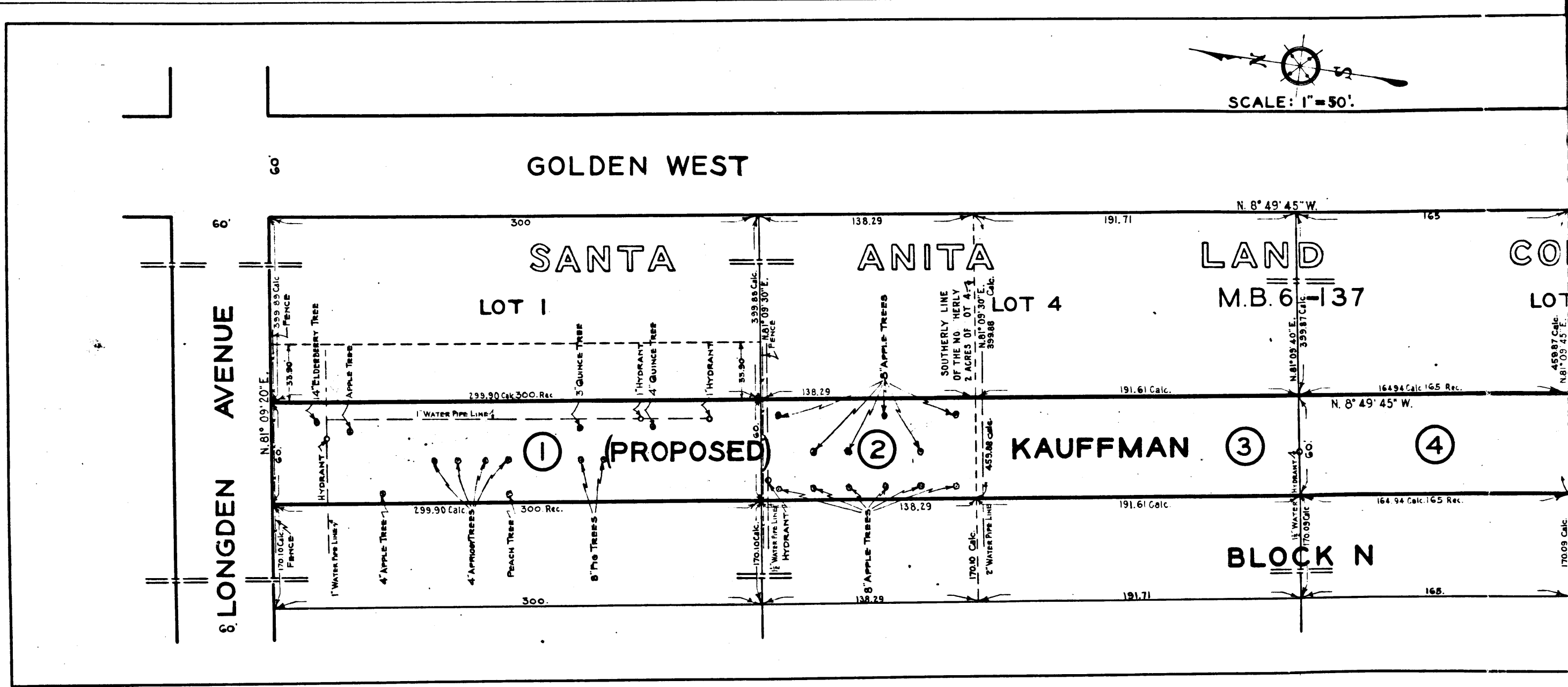
957

957

VENCO  
PASADENA, CALIF.

CONDENSED MAP NO. 13

CONDENSED MAP NO. 13



C.F. 1556 -

2