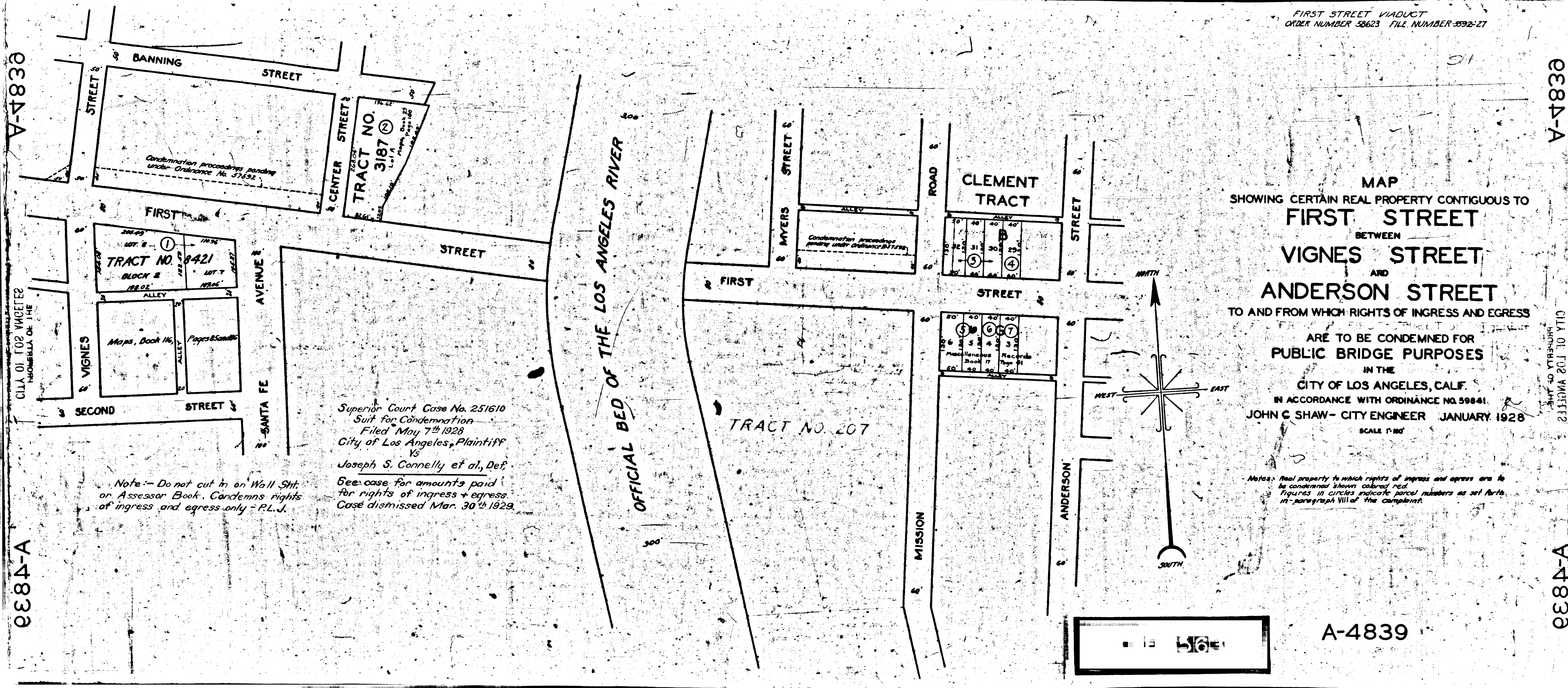


FIRST STREET VIADUCT  
ORDER NUMBER 58623 FILE NUMBER 592-27

084-A

084-A

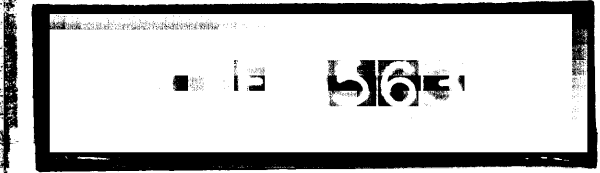


MAP  
SHOWING CERTAIN REAL PROPERTY CONTIGUOUS TO  
**FIRST STREET**  
BETWEEN  
**VIGNES STREET**  
AND  
**ANDERSON STREET**  
TO AND FROM WHICH RIGHTS OF INGRESS AND EGRESS  
ARE TO BE CONDEMNED FOR  
**PUBLIC BRIDGE PURPOSES**  
IN THE  
CITY OF LOS ANGELES, CALIF.  
IN ACCORDANCE WITH ORDINANCE NO 59841.  
JOHN C SHAW - CITY ENGINEER JANUARY 1928  
SCALE 1"=100'

Superior Court Case No. 251610  
Suit for Condemnation  
Filed May 7th 1928  
City of Los Angeles, Plaintiff  
vs  
Joseph S. Connelly et al, Def.  
See case for amounts paid  
for rights of ingress + egress.  
Case dismissed Mar. 30th 1929.

Note: - Do not cut in on Wall Stt.  
or Assessor Book. Condemns rights  
of ingress and egress only - P.L.J.

Notes: Real property to which rights of ingress and egress are to  
be condemned shown colored red.  
Figures in circles indicate parcel numbers as set forth  
in paragraph VIII of the complaint.



A-4839

084-A

084-A