

Superior Court Case No. 256172
 Suit for Condemnation
 Filed July 6th 1928
 City of Glendora, Pltff.
 Vs.
 Arnold Arvizu et al. Def.
 Final judgment in favor of Pltff, as
 per map, rendered July 31, 1929.
 D:72-264 OR 8204-396
 Sheet 48

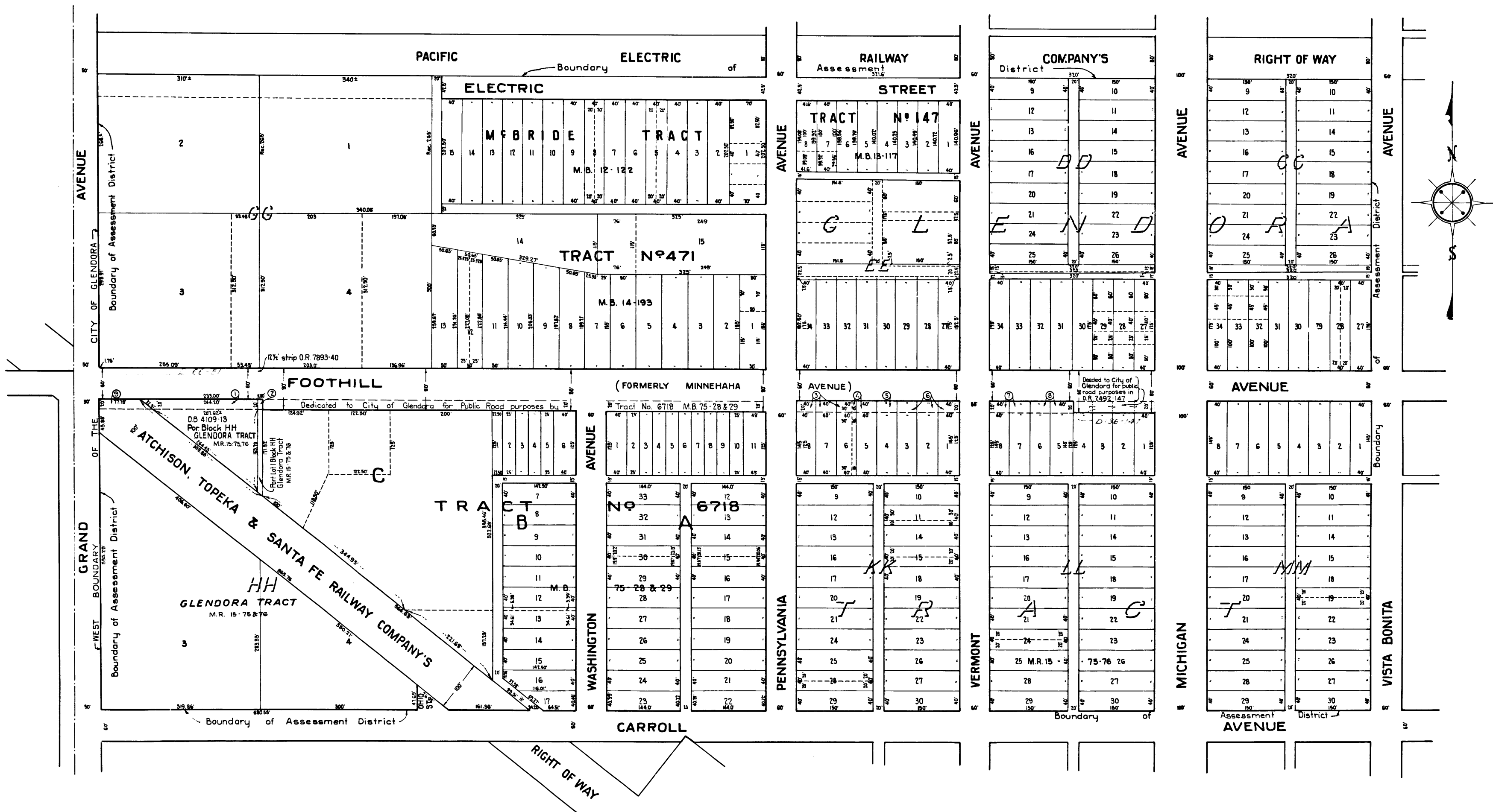


EXHIBIT 'C'
MAP N° 4038
 MAP SHOWING BY BOUNDARY LINE THE EXTENT OF THE TERRITORY TO BE INCLUDED IN THE DISTRICT TO BE ASSESSED TO PAY THE EXPENSE OF THE WIDENING OF FOOTHILL BOULEVARD BETWEEN GRAND AVENUE - AND MICHIGAN AVENUE IN THE CITY OF GLENDORA, LOS ANGELES COUNTY, CALIFORNIA.
 SCALE: 1" = 100'
Arthur E. O'Neil
 City Engineer

Note:-
 The boundary line of the assessment District is shown in Blue.
 Parcels sought to be condemned are designated by numbers in circles - ①
 Land to be condemned is shown between south line of Foothill Boulevard and heavy dashed line 20 feet south of and parallel to said Boulevard line, said land is colored Red.

C.F. 1573 -